

Electronically controlled proportional pressure regulating valves

with
PIEZO control

Series tecno basic
G1/8, NW 2.5

Series tecno plus
G1/4, NW 6

Characteristics

- ¹⁾ Other pressure ranges on request.
- ²⁾ At $p_1 = 10$ bar and $p_2 = 6.3$ bar, $\Delta p = 1$ bar.
- ³⁾ At ambient temperature 20°C.
- ⁴⁾ Relative to p_{2max} .
- ⁵⁾ At p_1 max.
- ⁶⁾ 2-wire technology, i.e. power supply and set value via the same cable.
- ⁷⁾ Higher voltage will damage the valve.
- ⁸⁾ Flange plates with screw thread, see accessories.
- ⁹⁾ Output is switching "ON" when output pressure is equivalent \pm tolerances to set value, and "OFF" when the output pressure is outside this limit.
- ¹⁰⁾ With connector and exhaust ported, booster (3) and pilot (y)
- ¹¹⁾ During connection with protected cable and plug. Screen only presented on main unit.
- ¹²⁾ Plus taken output current of digital output pressure reached



Pressures quoted as gauge pressure

Characteristics	Symbol	Unit	Description	
System			Piezo pilot controlled 3-way proportional pressure regulating valve, electronic closed loop control	
Type			tecno basic PRE-U, PRE-I	tecno basic PRE-U, PRE-I
Version ¹⁾			0–8 bar	0–2 bar
Port size			G1/8	G1/8
Mounting			Flange ⁸⁾	Flange ⁸⁾
Nominal size	NW	mm	2.5	2.5
Installation			In any position	In any position
Weight (mass)		kg	0.101 without base plate 0.155 with base plate	0.101 without base plate 0.155 with base plate
Medium and ambient temperature range	T_{min} T_{max}	°C °C	0 +50	0 +50
Storage temperature	T_{min} T_{max}	°C °C	-20 +60	-20 +60
Medium			Filtered, dry, lubricated ¹⁾ or oil-free compressed air 30µm (recommended 5 µm) dried to ISO8573-1, Kl. 3	
Lubrication			Oil-free or max. 30 mg/m ³ mineral oil Type VG 32 to ISO 3448	
Flow direction			On: 1 → 2 Off: 2 → 3	On: 1 → 2 Off: 2 → 3
Material			Aluminum, brass, spring steel, plastic, elastomer	
Pneumatic characteristics				
Nominal pressure	p_n	bar	6.3	6.3
Pressure range, inlet	p_{1min}	bar	1.5	1.5
	p_{1max}	bar	10	6
Pressure range, outlet ¹⁾	p_{2min}	bar	0	0
	p_{2max}	bar	8	2
Maximum flow rate ²⁾	Q_N	l/min	350 ²⁾	200 ²⁾
		m ³ /h	21	12
Hysteresis ⁴⁾	p_{2max}	%	< 0.2	< 0.2
Repeatability ⁴⁾	p_{2max}	%	< 0.2	< 0.2
Responsiveness ⁴⁾	p_{2max}	%	< 0.1	< 0.1
Linearität ⁴⁾	p_{2max}	%	≤ 0.6	≤ 0.5
Own air consumption ⁵⁾		NI/min	< 0.5	< 0.5
Electrical characteristics – Type PRE-U				
Nominal voltage	U_N	V DC	24 ± 10%	24 ± 10%
Nominal power	P_N	W	0.4	0.4
Residual ripple	U_N	%	10	10
Current consumption	I_{Bmax}	A	15	15
Set value input	U_W	V	0–10	0–10
Input resistance	R_E	kΩ	66	66
Scale	W/p_2	V/bar	1	5

for further characteristics see page 147–148

Piezo pilot controlled 3-way proportional pressure regulating valve, electronic closed loop control				
	tecno basic PRE-U, PRE-I	tecno plus PRE-U, PRE-I	tecno plus PRE-U, PRE-I	tecno plus PRE-U, PRE-I
	0–0.2 bar	0–10 bar	0–6 bar	0–2 bar
	G1/8	G1/4	G1/4	G1/4
	Flange ⁸⁾	Flange ⁸⁾	Flange ⁸⁾	Flange ⁸⁾
	2.5	6	6	6
	In any position	In any position	In any position	In any position
	0.101 without base plate 0.155 with base plate	0.360 without base plate 0.430 with base plate	0.360 without base plate 0.430 with base plate	0.360 without base plate 0.430 with base plate
	0 +50	0 +50	0 +50	0 +50
	-20 +60	-20 +60	-20 +60	-20 +60
		Filtered, dry, lubricated ¹⁾ or oil-free compressed air 30µm (recommended 5 µm) dried to ISO8573-1, Kl. 3 other neutral gases on request		
		Oil-free or max. 30 mg/m ³ mineral oil Type VG 32 to ISO 3448		
	On: 1 → 2 Off: 2 → 3	On: 1 → 2 Off: 2 → 3	On: 1 → 2 Off: 2 → 3	On: 1 → 2 Off: 2 → 3
		Aluminum, brass, spring steel, plastic, elastomer		
	6.3	6.3	6.3	6.3
	0 2.5	1.5 12	1.5 10	1.5 7
	0 0.2	0 10	0 6	0 2
	100 ²⁾ 6	1600 ²⁾	1600 ²⁾	1100 ²⁾
	< 0.5	< 0.2	< 0.2	< 0.2
	< 0.5	< 0.2	< 0.2	< 0.2
	< 0.5	< 0.2	< 0.2	< 0.2
	≤ 0.5	≤ 0.5	≤ 0.5	≤ 0.5
	< 1.0	< 1.5	< 1.5	< 1.5
	24 ± 10%	24 ± 10%	24 ± 10%	24 ± 10%
	0.4	0.8	0.8	0.8
	10	10	10	10
	15	30	30	30
	0–10	10	10	10
	66	> 55	> 55	> 55
	50	1	1.667	5

Electronically controlled pro- portional pres- sure regulating valves

with
PIEZO control

*Series tecno basic
G1/8, NW 2.5*

*Series tecno plus
G1/4, NW 6*

Characteristics



Electronically controlled proportional pressure regulating valves

with
PIEZO control

Series tecno basic
G1/8, NW 2.5

Series tecno plus
G1/4, NW 6

Characteristics

Pressures quoted as gauge pressure

Characteristics	Symbol	Unit	Description	
System			Piezo pilot controlled 3-way proportional pressure regulating valve, electronic closed loop control	
Type			tecno basic PRE-U, PRE-I	tecno basic PRE-U, PRE-I
Electrical characteristics – Type PRE-I				
Power supply ⁶⁾	I_B	mA	4	4
Set value input	W	mA	4–20	4–20
Input resistance	R_E	k Ω	≤ 550	≤ 550
Scale	W/ p_2	V/bar	2	8
Input voltage max. ⁷⁾	U_{Wmax}	V	12.5	12.5
General electrical characteristics				
Actual value output			Optional	Optional
Output voltage ¹³⁾	U_x	V	p_2 0 bar = 0 p_{2max} = 10	p_2 0 bar = 0 p_{2max} = 10
Output current max.	I_{xmax}	mA	1 (short circuit proof)	1 (short circuit proof)
Accuracy	p_{2max}	%	–	–
Cable connector			3 PIN connector, M8 or 4 PIN connector, M8	
EMC (electromagnetic compatibility)			Shielded connecting cables must be used ¹¹⁾	
Resistance to interferences			To EN 61000-6-2	To EN 61000-6-2
Emissions			To EN 61000-6-4	To EN 61000-6-4
Degree of protection		IP	30 DIN EN 60529	30 DIN EN 60529
Reaction to power failure			Port 2 exhaust	Port 2 exhaust
Digital output pressure reached ⁹⁾				
Output voltage	U_{Out}	VDC		
Output current	I_{Out}	mA		
Tolerance	p_{2max}	%		

¹⁾ Other pressure ranges on request.

²⁾ At $p_1 = 10$ bar and $p_2 = 6.3$ bar, $\Delta p = 1$ bar.

³⁾ At ambient temperature 20°C.

⁴⁾ Relative to p_{2max} .

⁵⁾ At p_1 max.

⁶⁾ 2-wire technology, i.e. power supply and set value via the same cable.

⁷⁾ Higher voltage will damage the valve.

⁸⁾ Flange plates with screw thread, see accessories.

⁹⁾ Output is switching "ON" when output pressure is equivalent \pm tolerances to set value, and "OFF" when the output pressure is outside this limit.

¹⁰⁾ With connector and exhaust ported, booster (3) and pilot (y)

¹¹⁾ During connection with protected cable and plug.

Screen only presented on main unit.

¹²⁾ Plus taken output current of digital output pressure reached

¹³⁾ Only type PRE-U



Electronically controlled proportional pressure regulating valves

with
PIEZO control

Series tecno basic
G1/8, NW 2.5

Series tecno plus
G1/4, NW 6

Characteristics

Piezo pilot controlled 3-way proportional pressure regulating valve, electronic closed loop control				
	tecno basic PRE-U, PRE-I	tecno plus PRE-U, PRE-I	tecno plus PRE-U, PRE-I	tecno plus PRE-U, PRE-I
	4	–	–	–
	4–20	0 (4–20)	0 (4–20)	0 (4–20)
	≤ 550	500	500	500
	80	2	2667	8
	12.5			
	Optional	–	–	–
	p ₂ 0 bar = 0 p _{2 max} = 10	0–10	0–10	0–10
	1 (short circuit proof)	1 (short circuit proof)	1 (short circuit proof)	1 (short circuit proof)
	–	< 1	< 1	< 1
		5 PIN connector M12x1.5 Shielded connecting cables must be used		
	To EN 61000-6-2	To EN 61000-6-2	To EN 61000-6-2	To EN 61000-6-2
	To EN 61000-6-4	To EN 61000-6-4	To EN 61000-6-4	To EN 61000-6-4
	30 DIN EN 60529	65 ¹⁰⁾ DIN EN 60529	65 ¹⁰⁾ DIN EN 60529	65 ¹⁰⁾ DIN EN 60529
	Port 2 exhaust	Port 2 exhaust	Port 2 exhaust	Port 2 exhaust
		OFF = 0 ON = UN – 0.7V		
		≤ 200 ¹²⁾		
		± 2		



Electronically controlled proportional pressure regulating valves

with
PIEZO control

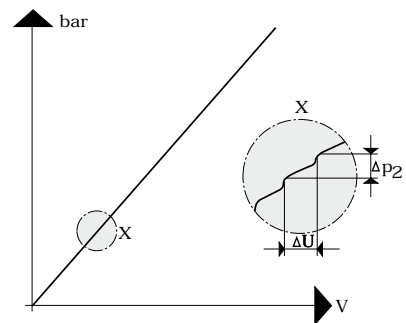
Series tecno basic
G1/8, NW 2.5

Series tecno plus
G1/4, NW 6

Characteristics

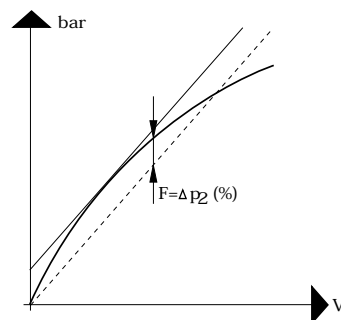
Sensitivity

The smallest change in the electronic input signal that leads to a change in actual output pressure is referred to as sensitivity. This is expressed as a percentage of maximum output pressure. For the tecno, this value is $< 0.1\%$ to $< 0.5\%$ depending on the version.



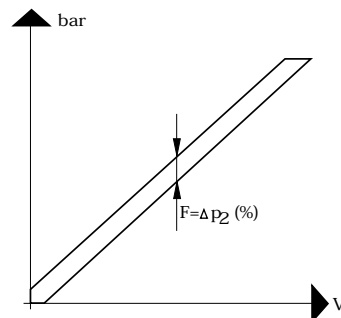
Linearity

The ideal curve showing output pressure in relation to electronic signal would be a straight line. Linearity is the maximum deviation from the straight line, expressed as a percentage of maximum output pressure.



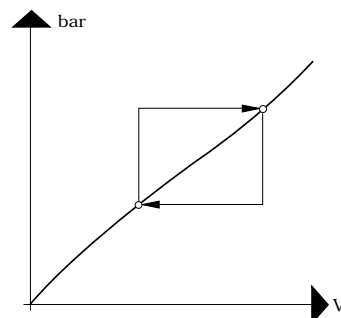
Hysteresis

The same electronic signal generates slightly different actual output pressures, depending on whether the previous signal was higher or lower. This difference, known as hysteresis, is caused by friction and temporary deformation of elastic components. The hysteresis of the electronically operated pressure regulating valve AIRFIT tecno from HOERBIGER is between $< 0.2\%$ and $< 0.5\%$ of the output pressure.



Repeatability

Control components for a given set value usually produce repeated actual values that differ less from each other than from the absolute set value, because the relatively large linearity deviation is excluded.



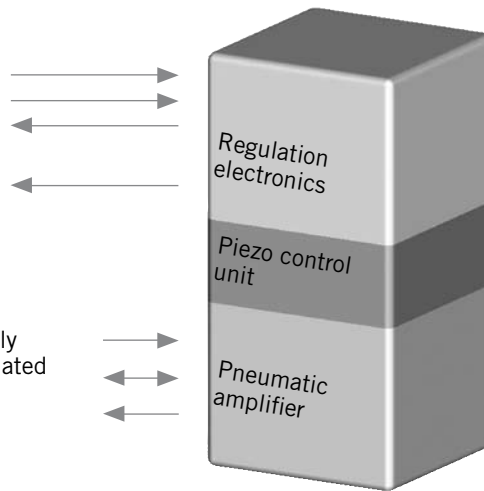
Design and Function

Proportional valves from the tecno series are piezo-controlled pressure regulating valves with electronic pressure regulation. They offer optimum dynamics at the lowest possible power consumption. The main valve ensures high aeration and ventilation output. The pressure sensor measures the current output pressure. An integrated electronic controller compares the sensor signal with the electrical setpoint and regulates the output pressure precisely to the predefined setpoint.

Diagram

Supply
Setpoint
Actual value
"Pressure achieved"
digital output

1 Pressure supply
2 Pressure-regulated
output
3 Outlet air



Electronically controlled proportional pressure regulating valves

with
PIEZO control

*Series tecno basic
G1/8, NW 2.5*

*Series tecno plus
G1/4, NW 6*

Design and function



Electronically controlled proportional pressure regulating valves

with
PIEZO control

Series tecno basic
G1/8, NW 2.5

Characteristics

Connection diagrams

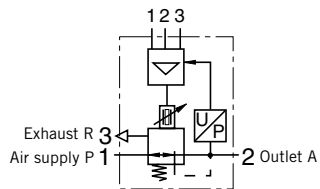
Versions:

- Voltage controlled (Type PRE-U)
- Current controlled (Type PRE-I)
- 3 pressure ranges
- With actual value output

Electronically controlled pressure regulating valve with PIEZO pilot control and ACTUAL VALUE feedback. An integrated potentiometer ensures that the device can be set to best meet the requirements of any given application. Remote control possible.



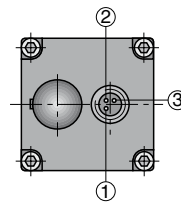
Symbol
3 PIN version



Color code

- 1 = blue
- 2 = black
- 3 = brown

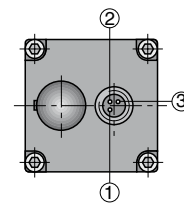
Connection diagram 1



Voltage controlled 0-10 V, Type PRE-U

- 1 = power supply 24 V DC/15 mA
- 2 = set value 0-10 V
- 3 = GND set value and power supply

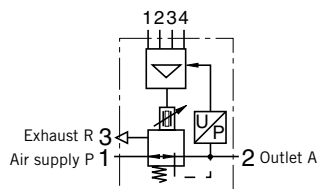
Connection diagram 2



Current controlled 4-20 mA, Type PRE-I

- (2-wire technology)
- 1, 2 = set value 4-20 mA, +
- 3 = set value GND

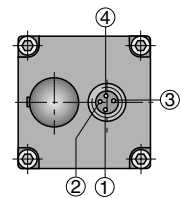
Symbol
4 PIN version



Color code

- 1 = blue
- 2 = white
- 3 = brown
- 4 = black

Connection diagram 3



Voltage controlled 0-10 V, Type PRE-U

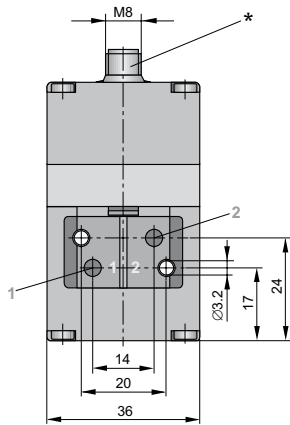
- with actual output
- 1 = power supply 24 V DC
- 2 = set value 0-10 V
- 3 = GND set value and power supply
- 4 = actual value output 0-10 V

For order instructions see page 153, for characteristics see page 144-150, for accessories see page 152, 153

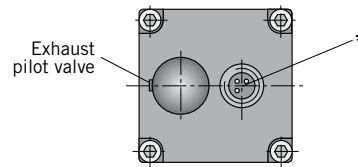
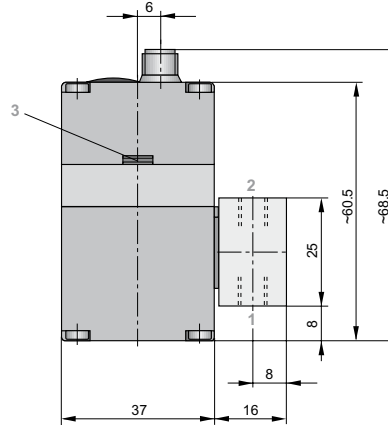
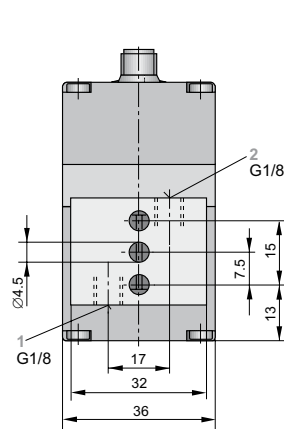
Dimensions in mm

Dimensions

without base plate



with single base plate



* Connection for 3-pin plug M8 (KC3104, KC3106)
Connection for 4-pin plug M8 (KY000575, KY000576)

Electronically controlled proportional pressure regulating valves

with
PIEZO control

Series tecno basic
G1/8, NW 2.5

Dimensions

Versions:

- Voltage controlled (Type PRE-U)
- Current controlled (Type PRE-I)
- 3 pressure ranges
- With actual value output

Electronically controlled pressure regulating valve with PIEZO pilot control and ACTUAL VALUE feedback. An integrated potentiometer ensures that the device can be set to best meet the requirements of any given application. Remote control possible.



For order instructions see page 153, for characteristics see page 144–150,

Dimensions in mm

Electronically controlled proportional pressure regulating valves

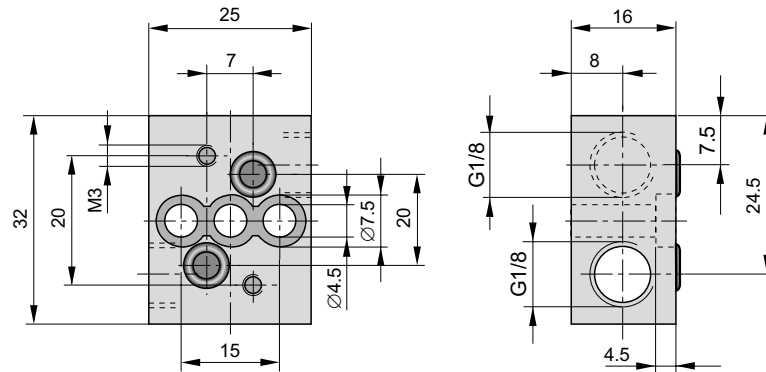
with
PIEZO control

Series tecno basic
G1/8, NW 2.5

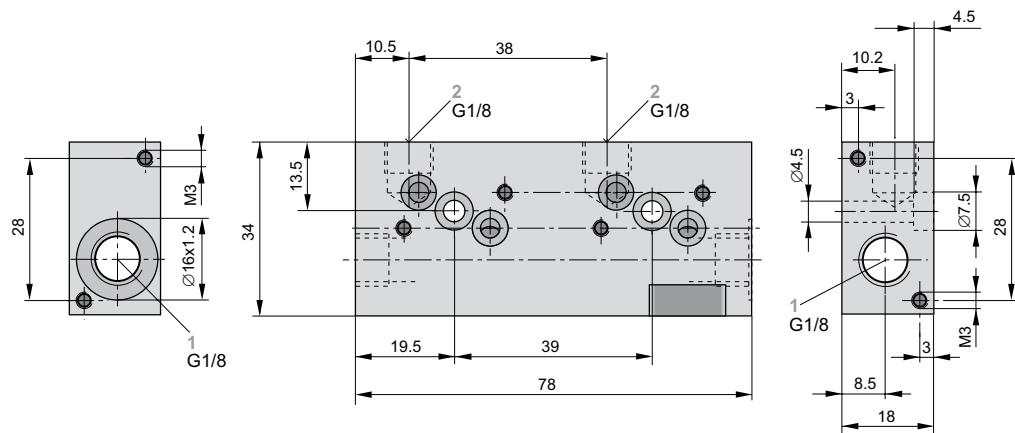
Base plates

Dimensions

Single base plate



2-fold base plate, for serial connection



For order instructions see page 153, for characteristics see page 144–150,
for accessories see page 152, 153

Dimensions in mm

Configurable, electronically controlled proportional pressure regulating valve – tecno basic

Order No.	PS	1	2	0	0	-	-	0	
------------------	----	---	---	---	---	---	---	---	--

Version (set value type) with 3 PIN connector	
00	Voltage
01	Current 4–20 mA

Version with 4 PIN connector	
06	Voltage + actual value output

Pressure range	
002	0.2 bar
020	2 bar
080	8 bar

Type variation	
0	Standard

Flange	
0	Without flange
5	Sidewise G1/8

Connection cable	
0	Without cable
1	Cable, straight 3 PIN
2	Cable, elbow 3 PIN
3	Cable, straight 4 PIN
4	Cable, elbow 4 PIN

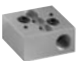







Electronically controlled proportional pressure regulating valves

with
PIEZO control

*Series tecno basic
G1/8, NW 2.5*

Order instructions

Accessories

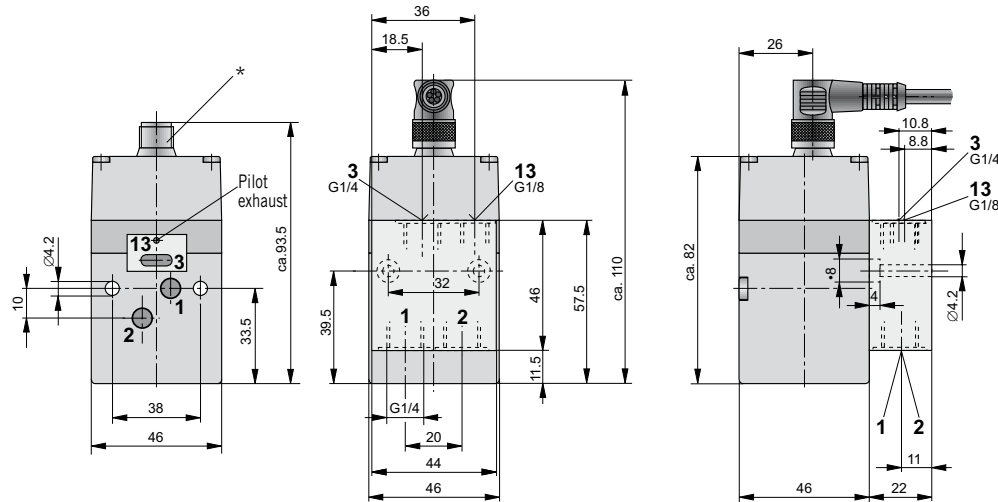
Description	Figure	Port size	Order No.
Single base plate		G1/8	PS11112-A-01
2-fold base plate kit, complete, for serial connection		G1/8	PS12407-A
Mounting kit for DIN rail mounting, 35 mm, EN 60715:2001			PS12368-A
Cover plate, complete			PS11160-A
Cable set, straight (5 m) 3 PIN version			KC3104
Cable set, elbow (5 m) 3 PIN version			KC3106
Cable set, straight (5 m) 4 PIN version			KY000575
Cable set, elbow (5 m) 4 PIN version			KY000576



Version with 5 PIN connector M12 x 1, elbow

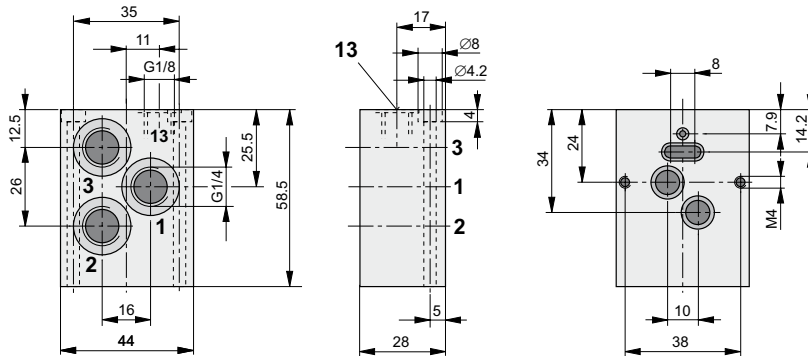
without base plate

with single base plate

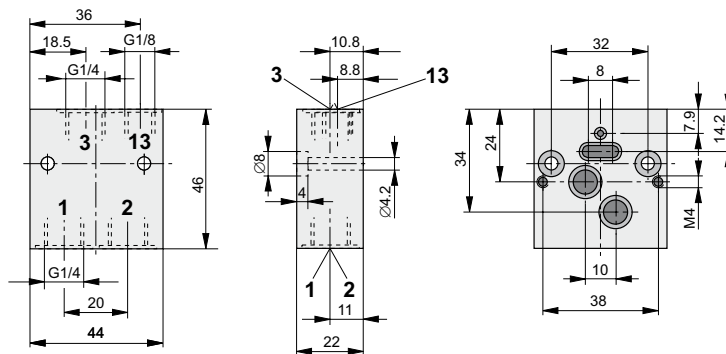


* Connection for 5-pole plug M12 x 1 (PS12316-A, PS12317-A)

Single base plate – Port size G1/4, straight



Single base plate – Port size G1/4, sidewise



Electronically controlled proportional pressure regulating valves

with
PIEZO control

Series tecno plus
G1/4, NW 6

Dimensions

Versions:

- Voltage controlled (Type PRE-U)
- Current controlled (Type PRE-I)
- 3 pressure ranges
- With actual value output
- With EMC mass

Connection plates



For order instructions see page 156, for characteristics see page 144–150, for accessories see page 155, 156

Dimensions in mm

Electronically controlled proportional pressure regulating valves

with
PIEZO control





Series tecno plus
G1/4, NW 6

Order instructions

Configurable, electronically controlled proportional pressure regulating valve – tecno plus

Order No.	PS	1	2	0	1	-	-	0			
Version		00 Voltage		01 Current 4–20 mA							
Pressure range		020 2 bar		060 6 bar		100 10 bar					
Type variation		0 Standard									
Flange		0 Without flange		1 Straight G1/4		3 Sidewise G1/4					
Connection cable		0 Without cable		1 Cable, straight		2 Cable, elbow					

Accessories

Description	Figure	Port size	Order No.
Cable 5 m, connector M12 x 1, straight			PS12315-A
Cable 5 m, connector M12 x 1, elbow			PS12316-A
Cable 5 m, connector M12 x 1, elbow, with LED			PS12317-A
Single base plate, with through connections, straight		G1/4	PS12300-A-01
Single base plate, with connections, sidewise		G1/4	PS12301-A-01

