

**Olympian Plus
Micro-Fog and Oil-Fog Lubricator
3/4", 1, 1 1/4", 1 1/2" Port Sizes**

- **Olympian plug-in system**
- **Constant oil density output with varying flow**
- **Oil-Fog models with 0,5 and 1 litre (1 pint and 1 quart US) reservoirs can be filled under pressure**
- **Simple and accurate drip rate adjustment, snap action lock**
- **Ideal for general lubrication applications**

Use Micro-Fog models in applications with one or more points of lubrication.

Use Oil-Fog models to lubricate a single tool, cylinder or other air driven device.

Use Fixed Venturi for high flow general purpose applications.



Technical Data

Fluid: Compressed air

Maximum pressure: 17 bar (250 psig)

Operating temperature*: -20° to +80°C (0° to +175°F)

* Air supply must be dry enough to avoid ice formation at temperatures below +2°C (+35°F).

Start point (i.e. minimum flow required for lubricator operation) at 6,3 bar (90 psig) inlet pressure:

Micro-Fog: 6 dm³/s (13 scfm)

Oil-Fog: 6 dm³/s (13 scfm)

Fixed venturi: 52 dm³/s (110 scfm)

Typical flow at 6,3 bar (90 psig) inlet pressure and 0,5 bar (7 psig) pressure drop:

Micro-Fog: 200 dm³/s (424 scfm)

Oil-Fog: 187 dm³/s (396 scfm)

Fixed venturi: 400 dm³/s (848 scfm)

Nominal bowl sizes:

0,5 litre (1 pint US)

1 litre (1 quart US)

8 litre (2 gallons US)

20 litre (5 gallons US)

Recommended lubricants: See page N/AL.8.900.935

Materials:

Body: Aluminium

Yoke: Aluminium

Bowl, 0,5 litre (1 pint US) and 1 litre (1 quart US): Aluminium

Bowl sight glass: Pyrex

Reservoirs, 8 litre (2 gallons US) and 20 litre (5 gallons US):

Steel

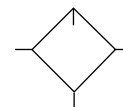
Reservoir sight tube: Polythene

Elastomers: Synthetic rubber

Ordering Information

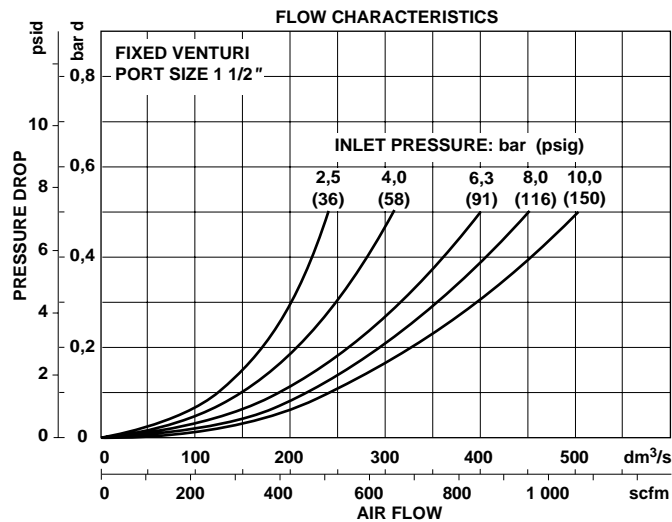
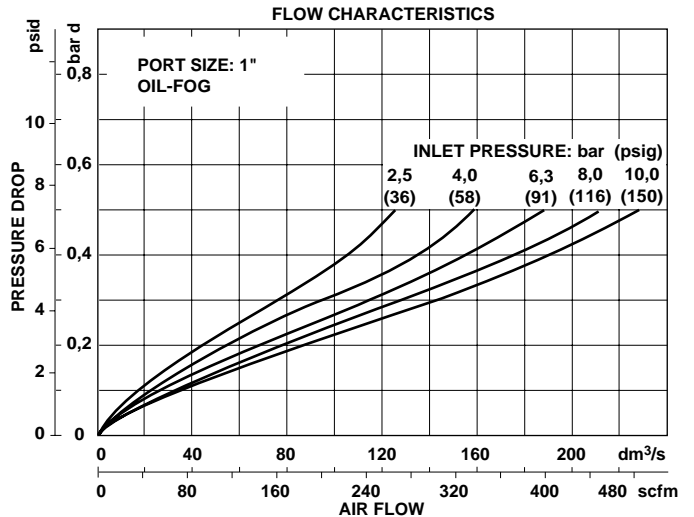
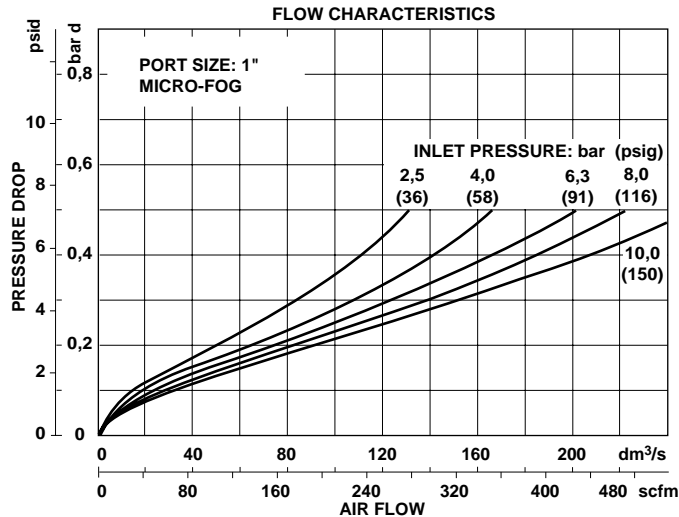
See *Ordering Information* on the following pages.

ISO Symbol





Typical Performance Characteristics



Ordering Information. Models listed include yoke with ISO G threads, filter with 0,5 litre (1 pint US) bowl, sight glass, closed bottom.

Type	Main Port Size	Model Number	Flow* dm ³ /s (scfm)	Weight kg (lb)
Micro-Fog	G3/4	L68M-6GP-ERN	200 (424)	2,10 (4.63)
	G1	L68M-8GP-ERN	200 (424)	2,04 (4.49)
	G1 1/4	L68M-AGP-ERN	200 (424)	2,08 (4.59)
	G1 1/2	L68M-BGP-ERN	200 (424)	2,12 (4.67)
Oil-Fog	G3/4	L68C-6GP-ERN	187 (396)	2,10 (4.63)
	G1	L68C-8GP-ERN	187 (396)	2,04 (4.49)
	G1 1/4	L68C-AGP-ERN	187 (396)	2,08 (4.59)
	G1 1/2	L68C-BGP-ERN	187 (396)	2,12 (4.67)

* Typical flow with 6,3 bar (90 psig) inlet pressure and a pressure drop of 0,5 bar (7 psig).

Accessories

Wall Mounting Bracket	Tamper Resistant Wire	Quick Fill Nipple	Level Switch	Remote Fill Kit
3/4" ported yoke: 18-001-979	2117-01 (pack of 10)	18-011-021	8 litre: 18-007-975	18-027-980
1" ported yoke: 18-001-979			20 litre: 18-007-974	
1 1/4" ported yoke: 18-001-978				
1 1/2" ported yoke: N/A				



Alternative Models

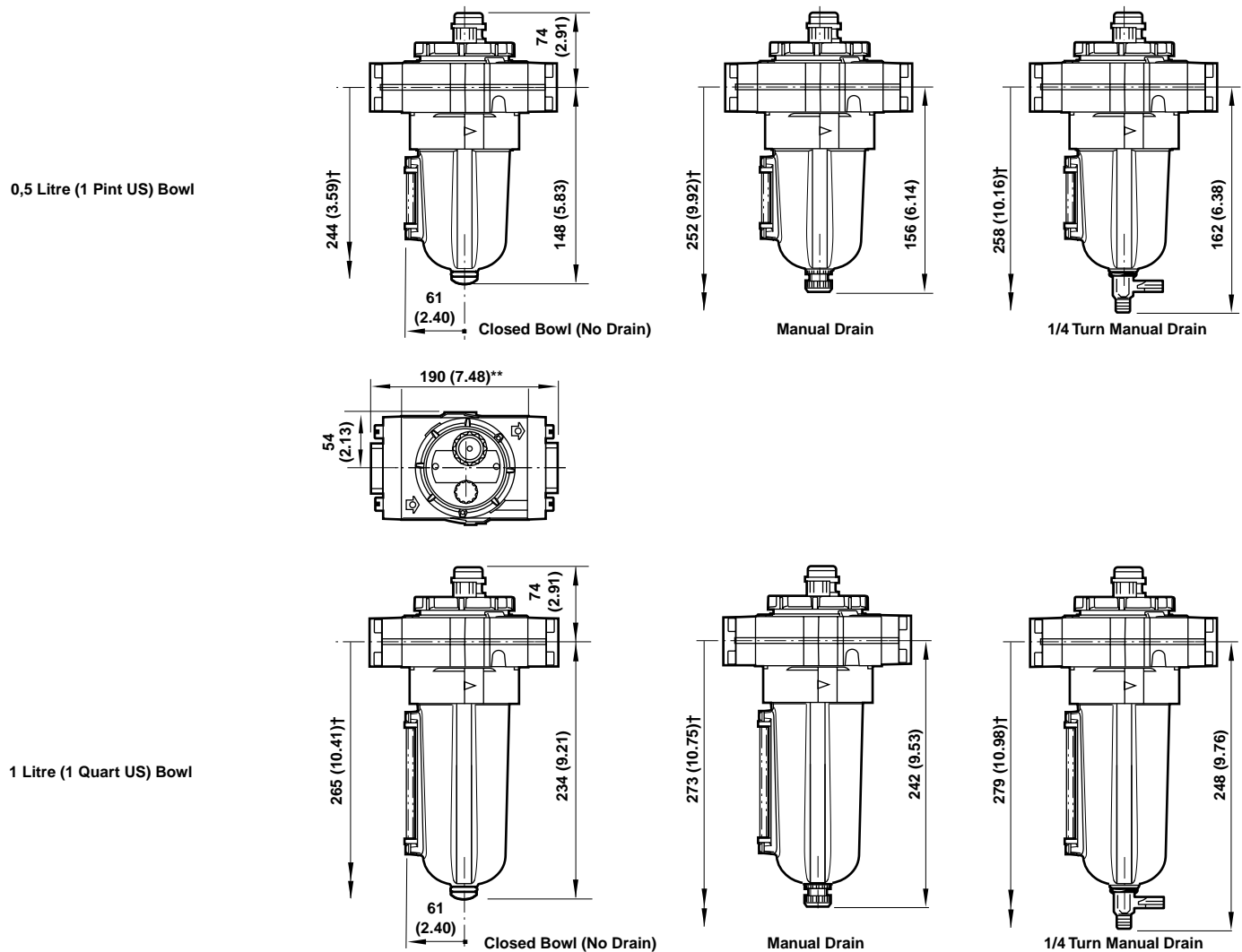
L 6 8 ★ - ★ ★ ★ - ★ ★ ★

Type	Substitute
Oil-Fog	C
Micro-Fog	M
Port Size	Substitute
3/4"	6
1"	8
1 1/4"	A
1 1/2"	B
None	N
Threads	Substitute
PTF	A
ISO Rc taper	B
ISO G parallel	G
None	N
Type	Substitute
Uni directional	P
Fixed venturi (Oil-Fog)	E

Options	Substitute
None	N
Quick fill device	Q
Bowl	Substitute
1 litre (1 quart US), without sight glass	C*
8 litre (2 gallons US)	J
20 litre (5 gallons US)	K
0,5 litre (1 pint US), without sight glass	M*
0,5 litre (1 pint US) with sight glass	R*
1 litre (1 quart US) with sight glass	U*
Drain	Substitute
Closed bottom bowl	E
Manual	M
No drain	N
Manual, 1/4 turn	Q
Remote fill	R*

* Remote fill only available with 1/2 and 1 litre bowls (1 pint and 1 quart US)

Dimensions mm (inches)

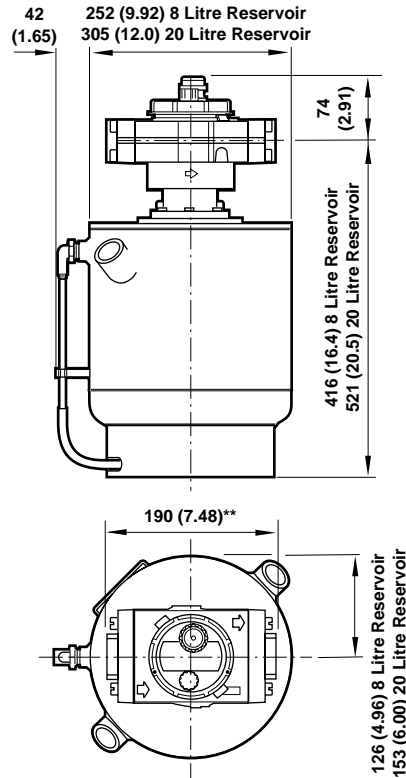


** Add 10 mm (0.39") for 1-1/4" and 1-1/2" models.
 † Minimum clearance required to remove bowl.



Dimensions mm (inches)

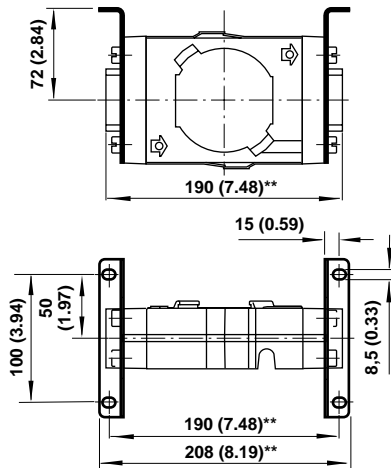
8 Litre (2 Gallon US) and
20 Litre (5 Gallon US) Reservoirs



** Add 10 mm (0.39") for 1-1/4" and 1-1/2" models.

Bracket Mounting

Use 4 mm (5/32") screws to mount bracket to wall.



** Add 10 mm (0.39") for 1 1/4" and 1 1/2" models.

Bracket Kit Reference

Item	Type	Part Number
Wall Bracket	3/4" ported yoke	18-001-979
	1" ported yoke	18-001-979
	1 1/4" ported yoke	18-001-978
	1 1/2" ported yoke	N/A

Service Kits

Item	Type	Part Number
Service kit	Micro-Fog	4382-300
	Oil-Fog	4382-301
	Fixed venturi	4382-302
Replacement sight glass	0,5 litre (1 pint US)	4380-060
Replacement drain	1 litre (1 quart US)	4380-061
	Manual	684-84
	Manual, 1/4 turn	619-50

Service kit includes sight dome, screen, filler plug, seals and o-rings. Oil fog service kit also contains check valve spring.

Warning

These products are intended for use in industrial compressed air systems only. Do not use these products where pressures and temperatures can exceed those listed under 'Technical Data'.

Before using these products with fluids other than those specified, for non-industrial applications, life-support systems, or other applications not within published specifications, consult NORGREN.

Through misuse, age, or malfunction, components used in fluid power systems can fail in various modes. The system designer is warned to consider the failure modes of all component parts used in fluid power systems and to provide adequate safeguards to prevent personal injury or damage to equipment in the event of such failure.

System designers must provide a warning to end users in the system instructional manual if protection against a failure mode cannot be adequately provided.

System designers and end users are cautioned to review specific warnings found in instruction sheets packed and shipped with these products.