

- > **Port size: 1/4" or 3/8" (ISO G/NPT)**
- > **Excelon design allows in-line installation or modular installation with other Excelon products**
- > **Push to lock adjusting knob with tamper resistant accessory**
- > **Helps protect air operated equipment from over pressurisation**
- > **Norgren pressure relief valves comply with category O(S.E.P.) and category 1 of the Pressure Equipment Directive 97/23/EC.**



### Technical features

#### Medium:

Compressed air only

#### Maximum operating pressure:

20 bar (145 psi)

#### Relief pressure range:

Standard

0,3 ... 10 bar (4 ... 145 psi)

0,3 ... 4 bar (4 ... 58 psi) optional,

0,3 ... 2 bar (4 ... 29 psi) optional

#### Port size:

G1/4, G3/8, 1/4" or 3/8" NPT

#### Exhaust port:

Rc1/4 with ISO G main ports

1/4 PTF with PTF main ports

#### Gauge port:

Rc 1/8 with ISO G main ports

1/8 PTF with PTF main ports

#### Ambient/Media temperature:

-34° ... +65°C (-30° ... +149°F)

Air supply must be dry enough to avoid ice formation at temperatures below +2°C (+35°F).

#### Materials:

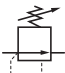
Body: Zinc

Bottom plug: Acetal

Bonnet: Acetal

Elastomers: CR

### Technical data - standard models

Symbol	Port size	Size	Pressure range (bar)	Weight (kg)	Model
	G1/4	Basic	0,3 ... 10	0,33	V72G-2GK-NMN
	G3/8	—	0,3 ... 10	0,33	V72G-3GK-NMN

### Option selector

Port size	Substitute
1/4"	<b>2</b>
3/8"	<b>3</b>
Thread form	Substitute
PTF	<b>A</b>
ISO G parallel (standard)	<b>G</b>

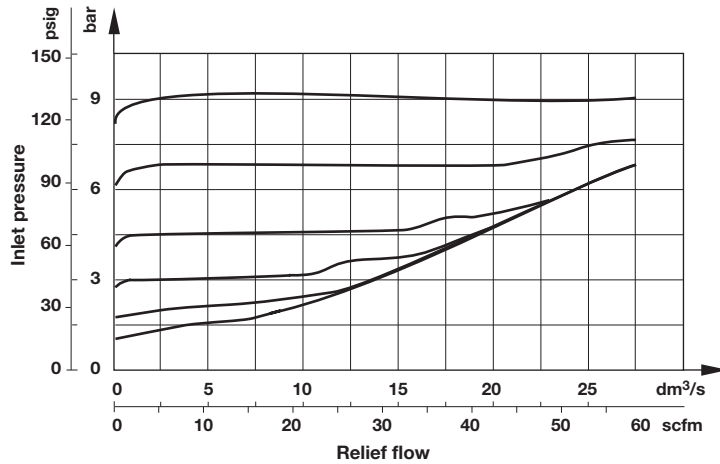
V72G-★ ★ K-N ★ ★

Gauge	Substitute
With	<b>G</b>
Without (standard)	<b>N</b>
Relief pressure adjustment range *1)	Substitute
0,3 ... 2 bar	<b>C</b>
0,3 ... 4 bar	<b>F</b>
0,3 ... 10 bar (standard)	<b>M</b>

\*1) Relief valve can be adjusted to pressures in excess of, and less than, those specified. Do not use these units to control pressures outside of the specified ranges.

**Flow characteristics**

Inlet pressure: 10 bar (145 psi)  
Port size: 1/4"



**Accessories**

<p><b>Universal mounting bracket</b></p> <p>Page 4 4224-50</p>	<p><b>Quikclamp®</b></p> <p>Page 3 4214-51</p>	<p><b>Quikclamp with wall bracket®</b></p> <p>Page 3 4214-52</p>	<p><b>Neck mounting bracket</b></p> <p>Page 4 74316-50</p>	<p><b>Panel nut</b></p> <p>4248-89</p>
<p><b>Tamper resistant kit</b></p> <p>4255-51</p>	<p><b>Quikmount pipe adaptor *1)</b></p> <p>Page 3 G1/4: 4215-08 G3/8: 4215-09 1/4 PTF: 4215-02 3/8 PTF: 4215-03</p>	<p><b>Porting block with three alternative 1/4" ports</b></p> <p>Page 3 G1/4: 4216-52 1/4 PTF: 4216-50</p>	<p><b>2/2 Shut-off valves (for full technical specification see datasheet 8.160.600)</b></p> <p>Page 4 G1/4: T72B-2GA-P1N G3/8: T72B-3GA-P1N 1/4 PTF: T72B-2AA-P1N 3/8 PTF: T72B-3AA-P1N</p>	<p><b>3/2 Shut-off valves (for full technical specification see datasheet 8.160.600)</b></p> <p>Page 4 G1/4: T72T-2GA-P1N G3/8: T72T-3GA-P1N 1/4 PTF: T72T-2AA-P1N 3/8 PTF: T72T-3AA-P1N</p>

\*1) Please use a Quikmount pipe adaptor if the Quikclamp be mounted at inlet or outlet side.

**Pressure switch**

**Porting block for pressure switch**

0523109000000000

**Pressure switch (0,5 ... 8 bar)**

0881300000000000

**Padlock (brass) with two keys \*1)**

0613633000000000

**Service kit**

**Service kit**

V72G-KIT

\*1) for shut-off valves and tamper resistant kit

**Gauge**

**Center back connection, white face (for full technical specification see datasheet 8.900.900)**

Pressure range bar *1	Mpa	psi	Ø	Thread size	Model
0 ... 2,5	—	0 ... 36	40 mm	R1/8	18-013-886
0 ... 4	0 ... 0,4	0 ... 58	40 mm	R1/8	18-013-990
0 ... 10	0 ... 1	0 ... 145	40 mm	R1/8	18-013-989

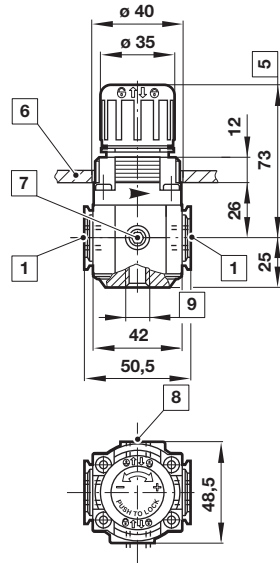
\*1) primary scale

**Center back connection, black face for North America (for full technical specification see datasheet 8.900.900)**

Pressure range psig *1	bar	Mpa	Ø	Thread size	Model
0 ... 30	0 ... 2	0 ... 0,2	1.5" (40 mm)	1/8 NPT	18-013-214
0 ... 60	0 ... 4	0 ... 0,4	1.5" (40 mm)	1/8 NPT	18-013-211
0 ... 160	0 ... 11	0 ... 1,1	1.5" (40 mm)	1/8 NPT	18-013-212

\*1) primary scale

**Drawings**



Dimensions in mm  
 Projection/First angle



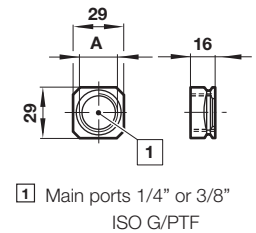
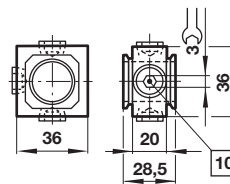
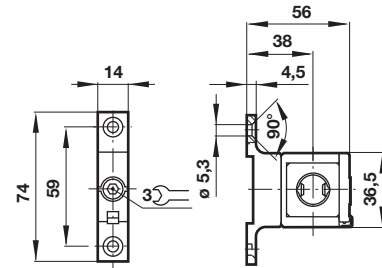
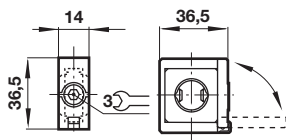
- 1 Main ports 1/4" or 3/8"
- 5 Reduces by 4 mm with knob in locked position
- 6 Panel thickness 0 ... 4 mm
- 7 Gauge port 1/8" plugged
- 8 Alternative gauge port 1/8" plugged
- 9 Exhaust port 1/4"

**Accessories**  
**Quikclamp®**

**Quikclamp® with wall bracket**

**Porting block**

**Pipe adapter**

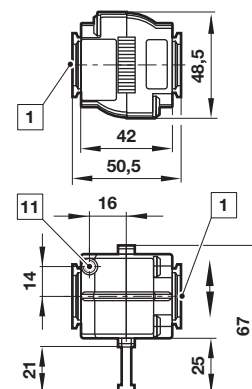
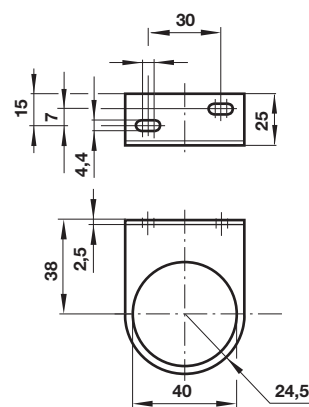
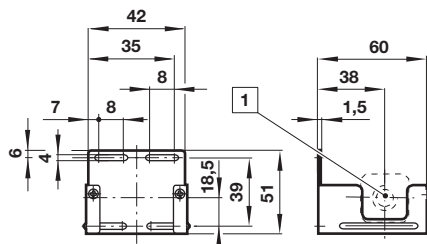


- 10 Ports (G1/4 or 1/4 NPT ) plugged

**Wall mounting bracket**

**Neck mounting bracket**

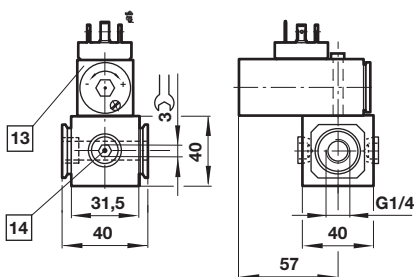
**Shut-off valves**



- 1 Main ports

- 1 Main ports 1/4" or 3/8" ISO G/PTF
- 11 Exhaust port M5 at 3/2 valve only

**Porting block for pressure switch**



- 13 Pressure switch is not in scope of delivery
- 14 Alternative G1/4 ports plugged

## Warning

These products are intended for use in industrial compressed air systems only. Do not use these products where pressures and temperatures can exceed those listed under

»**Technical features/data**«.

Before using these products with fluids other than those specified, for non-industrial applications, life-support systems or other applications not within published specifications, consult

IMI Precision Engineering, Norgren Inc.

Through misuse, age, or malfunction, components used in fluid power systems can fail in various modes.

The system designer is warned to consider the failure modes of all component parts used in fluid power systems and to provide adequate safeguards to prevent personal injury or damage to equipment in the event of such failure.

System designers must provide a warning to end users in the system instructional manual if protection against a failure mode cannot be adequately provided.

System designers and end users are cautioned to review specific warnings found in instruction sheets packed and shipped with these products.