

MINIATURE PLASTIC PRESSURE REGULATORS

For water and compressed air use

R91 - G1/4

R91



Bonnet and body made from acetal plastic
 Low torque, non-rising adjusting knob
 Snap action knob locks pressure setting when pushed down
R91W - Materials in contact with fluid are approved by the National Sanitation Foundation and the Food and Drug Administration for use in potable water systems

TECHNICAL DATA

Fluid:
 R91G: Compressed air and non-potable water
 R91W: Potable water, deionized water

Maximum pressure:
 10 bar (150 psig)

Operating temperature:
 Water service: +2°C ... + 52°C
 Air service: -20°C ... + 52°C*

When used in air service, air supply must be dry enough to avoid ice formation at temperatures below +2°C

Typical flow:
 Compressed air service:
 11 dm³/s at 10 bar inlet pressure, 6,3 bar set pressure and a droop of 1 bar from set
 Water service:
 6,6 litres per minute at 7 bar inlet pressure, 4 bar set pressure and a droop of 1 bar from set

Gauge ports:
 1/8 PTF with PTF main ports
 1/8 with ISO Rc main ports
 1/8 with ISO G main ports

MATERIALS

Body and bonnet: Acetal
 Valve:
 R91G: Brass/nitrile
 R91W: Stainless steel/food grade EPDM
 Valve seat: Acetal
 Valve seat o-ring:
 R91G: Nitrile
 R91W: Food grade EPDM
 Diaphragm:
 R91G: Acetal/nylon inserted nitrile
 R91W: Acetal/nylon inserted nitrile, food grade
 Gauge port plugs: Polypropylene (furnished only with PTF-ported units)

MODELS FOR COMPRESSED AIR AND NON-POTABLE WATER APPLICATIONS

		Port size	Pressure range (bar)	Flow (dm ³ /s)	kg	MODELS	ACCESSORIES	SERVICE KIT		
							Neck mounting bracket	Gauge Ø 40 mm 0 ... 4 bar	0 ... 10 bar	
Non relieving Relieving		G1/4	0,3...3,5	11	0,07	R91G-2GK-NEN	18-025-003	18-013-990	18-013-989	3407-94
		G1/4	0,3...8,6	11	0,07	R91G-2GK-NLN	18-025-003	18-013-990	18-013-989	3407-94
		G1/4	0,3...8,6	11	0,07	R91G-2GK-RLN*	18-025-003	18-013-990	18-013-989	3407-95

*Relieving type for compressed air use only

MODELS FOR POTABLE AND DE-IONISED WATER APPLICATIONS

		Port size	Pressure range (bar)	Flow* (l/min)	kg	MODELS	ACCESSORIES	SERVICE KIT	
							Neck mounting bracket		
Non relieving Relieving		G1/4	0,3 ... 3,5	6,6	0,07	R91W-2GK-NEN	18-025-003	3407-93	
		G1/4	0,3 ... 8,6	6,6	0,07	R91W-2GK-NLN	18-025-003	3407-93	

* Approximate flow with 10 bar inlet pressure, 6,3 bar set pressure and a 1 bar droop from set.

OPTIONS SELECTOR

Application	Substitute						
Industrial air, non-potable water	G						
26 mm	W						
<hr/>							
Port size	Substitute						
1/4"	2						
<hr/>							
Threads	Substitute						
PTF	A						
ISO Rc taper	B						
ISO G parallel	G						
<hr/>							
Adjustment	Substitute						
Knob	K						

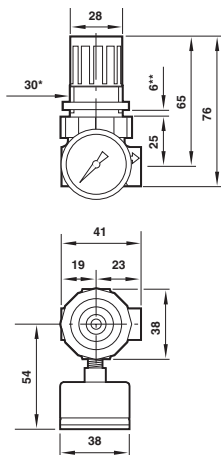
R 9 1 ★ - ★ ★ ★ - ★ ★ ★

Gauge	Substitute
With	G ††
Without	N
<hr/>	
Outlet pressure adjustment range†	Substitute
0,3 ... 3,5 bar	E
0,3 ... 8,6 bar	L
<hr/>	
Diaphragm	Substitute
Non relieving	N
Relieving ††	R

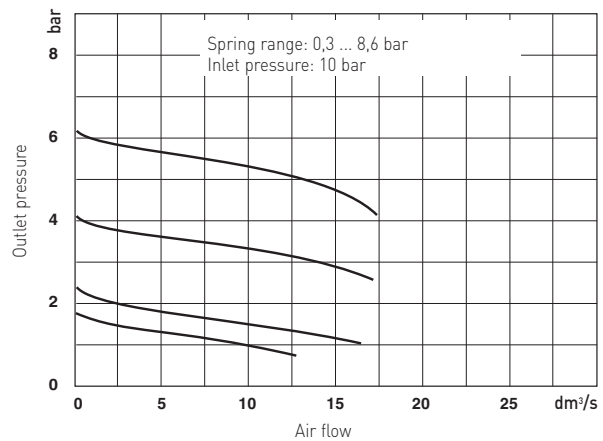
†† Gauge with NSF approved materials not available.
 †† Relieving diaphragm only available with the R91G regulator.

DIMENSIONS

Panel mounting hole diameter 30 mm
 Maximum panel thickness 0 to 6 mm

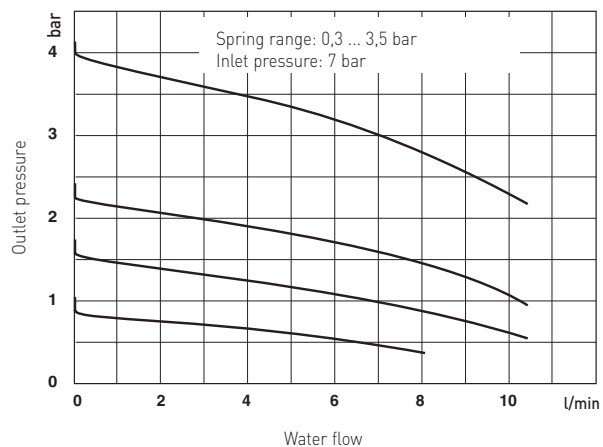
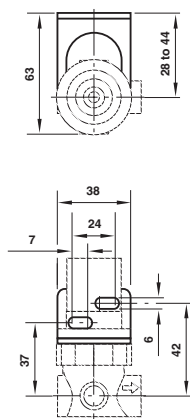


FLOW CHARACTERISTICS



Bracket mounting

Use 3 mm screws to mount bracket to wall



WATER REGULATORS

R06, R43 & 11-809 - G1/8 ... G1



11-809



R06



R43

Can be disassembled without removal from the air or water line

TECHNICAL DATA

Medium:

Water and compressed air

Operating temperature:

Water service: 2°C ... 93°C (R43 & 11-809) and 2°C ... 65°C† (R06)

Air service: -34°C ... 93°C* (R43 & 11-809) and -34°C ... 65°C† (R06)

* Air supply must be dry enough to avoid ice formation at temperatures below 2°C

† Typical flow for water service at 7 bar inlet pressure, 4 bar set pressure and a droop of 1 bar from set: 4,9 lpm

† Typical flow for compressed air service at 7 bar inlet pressure, 6,3 bar set pressure and a droop of 1 bar from set: 5,7 dm³/s

Gauge ports:

R43:

1/4" ISO G with ISO G main ports

R06:

1/8" PTF

11-809:

1/8" PTF with PTF main ports

G1/8 with ISO G main ports

Rc1/4 with ISO Rc main ports

MATERIALS

Body: Brass

Elastomers: Nitrile

Port size	Pressure range (bar)	Flow (dm³/s)	kg	MODELS	ACCESSORIES		SERVICE KIT
					Wall mounting bracket	Gauge Ø 40 mm (0 ... 10bar)*	
G1/8	0,14 ... 7	5,7	0,09	R06-170-NNKD			
G1/8	0,14 ... 7	5,7	0,09	R06-122-NNKD	18-001-021	18-013-989	3407-17
G1/4	0,14 ... 7	5,7	0,09	R06-270-NNKD	18-001-021	18-013-989	3407-17
G1/4	0,14 ... 7	5,7	0,09	R06-222-NNKD	18-001-021	18-013-989	3407-17
G1/4	0,3 ... 8,6	0,4	1,09	R43-201-NNLG	18-001-990	18-013-013	5298-03
G3/8	0,3 ... 8,6	0,4	1,09	R43-301-NNLG	18-001-990	18-013-013	5298-03
G1/2	0,3 ... 8,6	0,6	1,09	R43-406-NNLG	18-001-990	18-013-013	5298-10
G3/4	0,3 ... 8	1,7	7,8	11-809-999	-	18-013-989	2436-03
G1	0,3 ... 8	1,7	7,5	11-809-995	-	18-013-989	2436-03

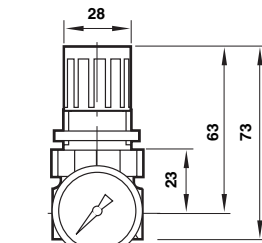


* Gauges not suitable for potable water applications. Other pressure ranges available.

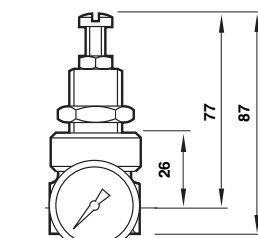
DIMENSIONS

R06

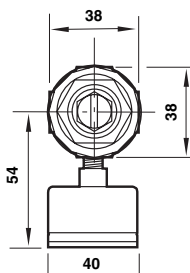
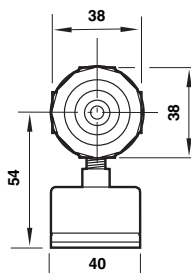
Panel mounting hole diameter:
Models with plastic bonnet: 30 mm
Models with brass bonnet: 21 mm
Maximum panel thickness: 6 mm



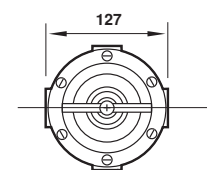
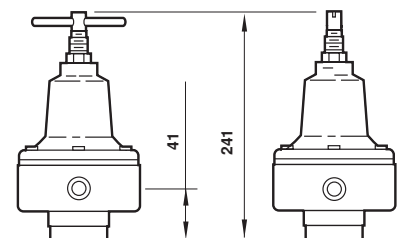
R06 221 Models with Plastic Bonnet



R06 222 Models with Brass Bonnet



11-809



Dimensions in mm

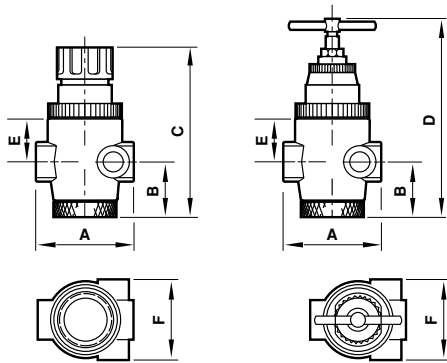
For further information



www.norgren.com/info/en6-126

R43

Panel mounting hole diameter: 48 mm
Maximum panel thickness: 5 mm



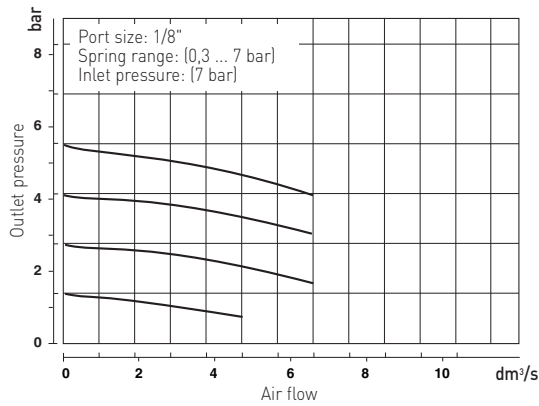
Port size	A	B	C	D	E	F
1/4, 3/8	70	39	124	146	31	59
1/2	85	41	127	150	33	62

Dimensions in mm

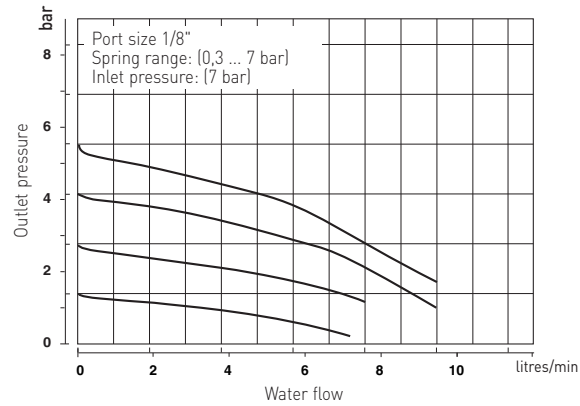
FLOW CHARACTERISTICS

R06

Air flow characteristics

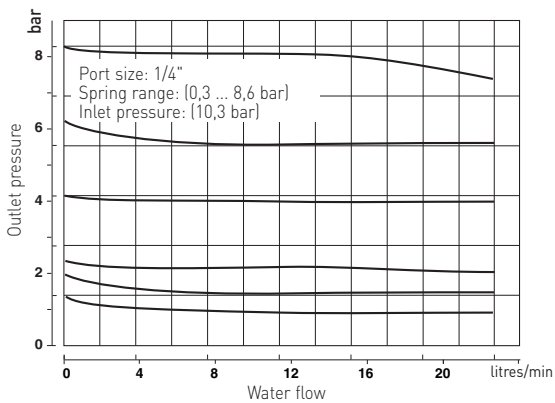


Water flow characteristics

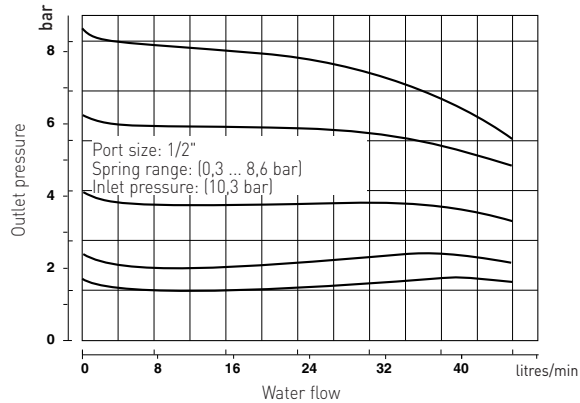


R43

Water flow characteristics



Water flow characteristics



11-809

Water flow characteristics

