

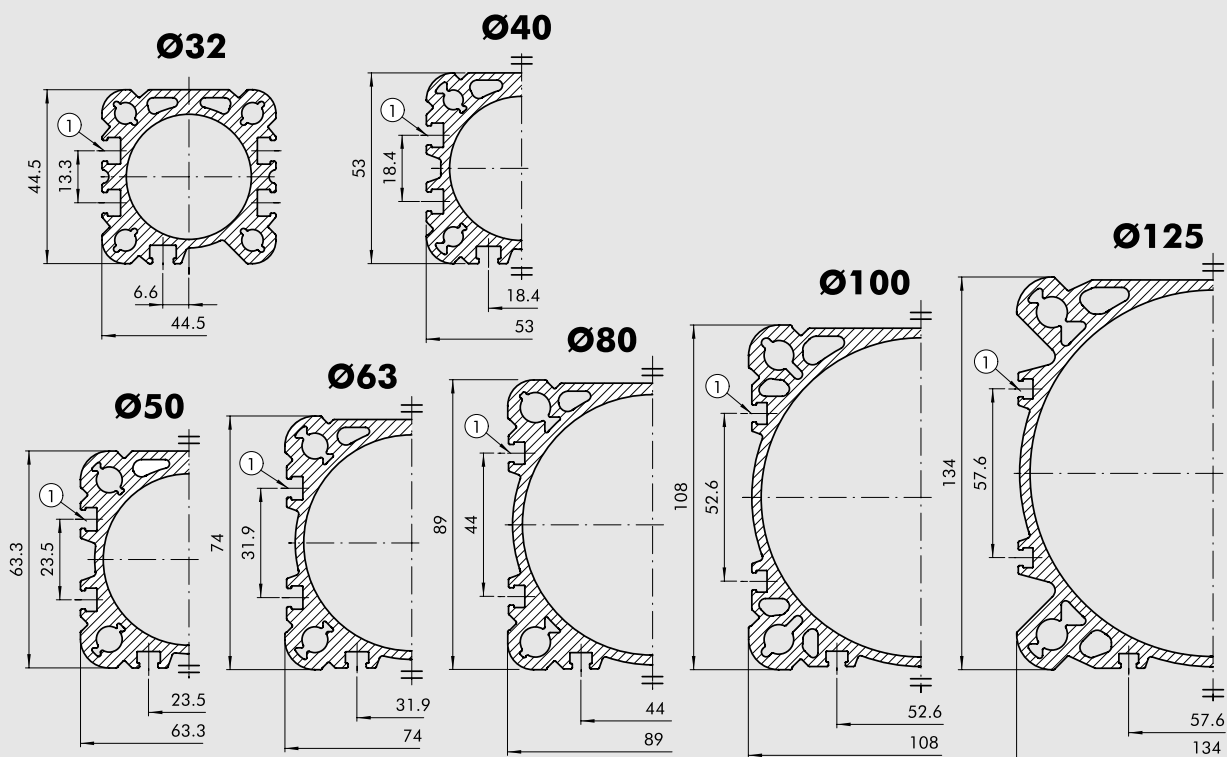
ISO 15552 CYLINDERS – TYPE A (EX ISO 6431)

ISO 15552 cylinders, featuring a barrel with longitudinal slots on three sides for inserting and securing retractable sensors. The same slots can also be used for valves and other mechanical parts.



BARREL CROSS SECTION

① SLOTS FOR RETRACTABLE SENSOR



KEY TO CODES CYLINDER ISO 15552 TYPE "A"

CYL	1 2 1 TYPE	A	3 2 BORE	0 0 5 0 STROKE	C MATERIAL	P GASKETS
	121 Double-acting, cushioned	A Standard	32	For the maximum suppliable strokes, look at the technical data	A C45 chromed rod, aluminium piston rod: standard for all cylinders with ≥ 1000 mm-stroke cylinders and for cylinder with $\varnothing 80$ mm and over	N NBR gaskets
	122 Through-rod	▲ B No stick slip	40		C C45 chromed rod, technopolymer piston: standard for cylinders of $\varnothing 32$ to 63 mm with < 1000 mm strokes	P Polyurethane gaskets
	124 Double-acting, non-cushioned	C Non-magnetic	50			Z Stainless steel piston rod and nut aluminium piston
	125 Opposed		63		X Stainless steel piston rod and nut technopolymer piston	
	+ 126 Single-acting		80			
	127 Tandem		A1 = $\varnothing 100$ A2 = $\varnothing 125$			
	134 Rod lock version					
	* 136 Version with piston rod lock					
	* ♦ 137 Piston rod lock + guide unit					

- Only available for versions with aluminium piston (A or Z)
- ▲ Available until $\varnothing 63$ and only the versions with piston in aluminum (A or Z)
- * For speeds lower than 0.2 m/s, to prevent surging. Use no-lubricated air only
- ♦ Available up to $\varnothing 100$
- * Not available for gaskets V or B

KEY TO CODES CYLINDER ISO 15552 LOW-FRICTION TYPE "A"

CYL	1 2 9	A TYPE	3 2 BORE	0 0 5 0 STROKE	C MATERIAL	P GASKETS
		A Low friction, type A	32	$\varnothing 32$ to 80 stroke 1 to 2800 mm $\varnothing 100$ to 125 stroke 1 to 2600 mm	A C45 chromed rod, aluminium piston rod: standard for all cylinders with ≥ 1000 mm-stroke cylinders and for cylinder with $\varnothing 80$ mm and over	N NBR gaskets
		B Low friction, type B	40		C C45 chromed rod, technopolymer piston: standard for cylinders of $\varnothing 32$ to 63 mm with < 1000 mm strokes	P Polyurethane gaskets
		C Low friction, type C	50			Z Stainless steel piston rod and nut aluminium piston
		D Low friction, type D	63		X Stainless steel piston rod and nut technopolymer piston	
		E Low friction, type E	80			
		F Low friction, type F	A1 = $\varnothing 100$ A2 = $\varnothing 125$			

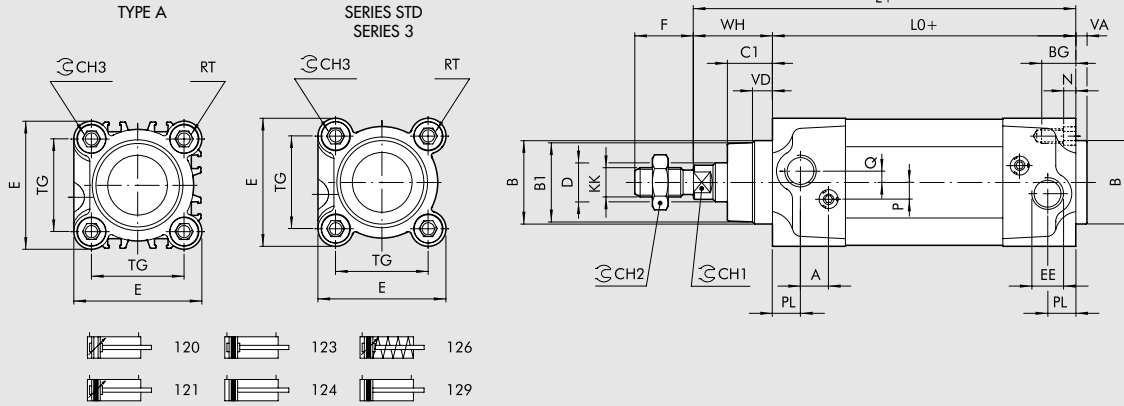
KEY TO CODES CYLINDER ISO 15552 LONG-CUSHIONING TYPE "A"

CYL	1 3 0	A TYPE	3 2 BORE	0 0 5 0 STROKE	A MATERIAL	P GASKETS
		A 200 mm front/rear cushioning cone – 200 mm ext.	32	1 to 2600 mm	A C45 chromed rod, aluminium piston rod for all sizes	N NBR gaskets
		B 150 mm front/rear cushioning cone – 150 mm ext.	40		Z Stainless steel piston rod and nut aluminium piston	P Polyurethane gaskets
		C 100 mm front/rear cushioning cone – 100 mm ext.	50			V FKM/FPM gaskets
		D 150 mm front/rear cushioning cone – 200 mm ext.	63			
		E 100 mm front/rear cushioning cone – 200 mm ext.				
		F 50 mm front/rear cushioning cone – 100 mm ext.				
		G 100 mm front/rear cushioning cone – 150 mm ext.				
		H 200 mm front cushioning cone – 200 mm ext.				
		I 150 mm front cushioning cone – 150 mm ext.				
		L 100 mm front cushioning cone – 100 mm ext.				
		M 150 mm front cushioning cone – 200 mm ext.				
		N 100 mm front cushioning cone – 150 mm ext.				
		O 50 mm front cushioning cone – 100 mm ext.				
		Q 200 mm rear cushioning cone – 200 mm ext.				
		R 150 mm rear cushioning cone – 150 mm ext.				
		S 100 mm rear cushioning cone – 100 mm ext.				
		T 150 mm rear cushioning cone – 200 mm ext.				
		U 100 mm rear cushioning cone – 200 mm ext.				
		V 50 mm rear cushioning cone – 100 mm ext.				

ISO 15552 CYLINDERS DIMENSIONS

DIMENSIONS OF STANDARD VERSION

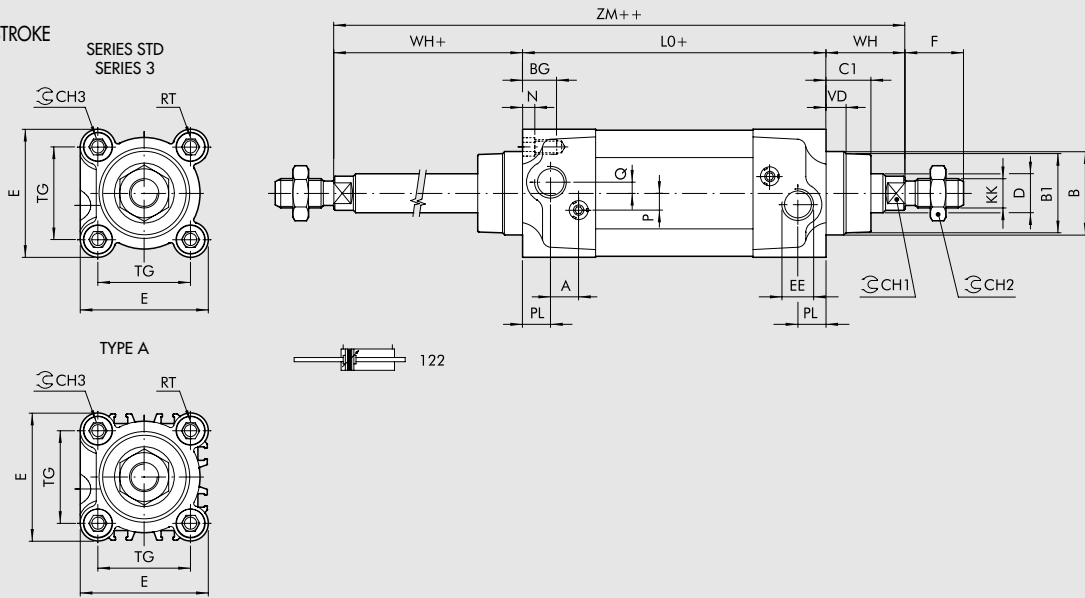
+ = ADD THE STROKE



DIMENSIONS OF THROUGH-ROD VERSION

+ = ADD THE STROKE

++ = ADD TWICE THE STROKE



Ø	PL	VD	A	B	B ₁	WH	C ₁	CH ₁	CH ₂	CH ₃	KK	D	TG	VA	F	EE	RT	E	L	L ₀	ZM	BG	N	P	Q
32	10	6.5	10	30	28	26	16	10	17	6	M10x1.25	12	32.5	4	22	G1/8	M6	46	120	94	146	14.5	4.5	6	4
40	12	8	10	35	33	30	20	13	19	6	M12x1.25	16	38	4	24	G1/4	M6	54	135	105	165	14.5	4.5	6	4
50	14	13	10	40	38	37	25	17	24	8	M16x1.5	20	46.5	4	32	G1/4	M8	64.5	143	106	180	17.5	5.5	6	6
63	16	14	10	45	40	37	25	17	24	8	M16x1.5	20	56.5	4	32	G3/8	M8	75.5	158	121	195	17.5	5.5	6	6
80	18	12	12	45	43	46	33	22	30	10	M20x1.5	25	72	4	40	G3/8	M10	94	174	128	220	21.5	5.5	10	7
100	20	14	12	55	49	51	38	22	30	10	M20x1.5	25	89	4	40	G1/2	M10	111	189	138	240	21.5	5.5	10	7
125	25	20	10	60	54	65	45	27	41	12	M27x2	32	110	6	54	G1/2	M12	135	225	160	290	25.5	6.5	12	8

VERSION 126 (SINGLE-ACTING)

	Upper limit	Stroke	Lower limit	L0 - Ø 32	L0 - Ø 40	L0 - Ø 50	L0 - Ø 63	L - Ø 32	L - Ø 40	L - Ø 50	L - Ø 63
ISO	0	< C ≤	25	94	105	106	121	120	135	143	158
ISO	25	< C ≤	50	94	105	106	121	120	135	143	158
NON ISO	50	< C ≤	75	115	129.5	130.5	145.5	141	159.5	167.5	182.5
NON ISO	75	< C ≤	100	136	154	155	170	162	184	192	207
NON ISO	100	< C ≤	125	157	178.5	179.5	194.5	183	208.5	216.5	231.5
NON ISO	125	< C ≤	150	178	203	204	219	204	233	241	256
NON ISO	150	< C ≤	175	199	227.5	228.5	243.5	225	257.5	265.5	280.5
NON ISO	175	< C ≤	200	220	252	253	268	246	282	290	305
NON ISO	200	< C ≤	225	241	276.5	277.5	292.5	267	306.5	314.5	329.5
NON ISO	225	< C ≤	250	262	301	302	317	288	331	339	354