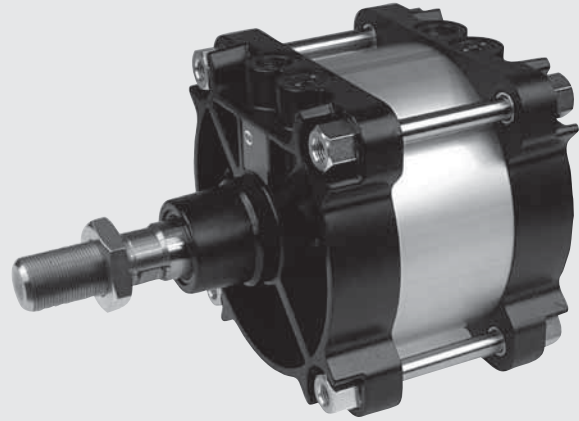


ISO 15552 CYLINDER Ø 160-200 (ex ISO 6431) WITH ROUND BARREL

Cylinders made to ISO 15552 available in various versions and with a wide range of accessories:

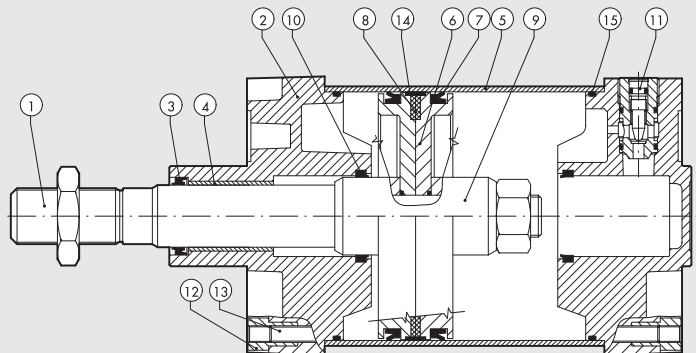
- configuration with or without magnet
- double-acting – single-or through-rod
- NBR gaskets or FKM/FPM (high temperature)
- available with mounted intermediate hinge
- special configurations on request



TECHNICAL DATA		NBR	FKM/FPM
Max operating pressure	bar	10	
	MPa	1	
Temperature range	°C	-10 to +80	-10 to +150
Design		Round barrel with tie rods	
Standard strokes	mm	25-50-75-80-100-125-150-200-250-300-350-400-500-600-700-800-900-1000	
Weight		See cylinder "General technical data" at the beginning of the chapter	
Forces generated at 6 bar (tensile stress)		See cylinder "General technical data" at the beginning of the chapter	

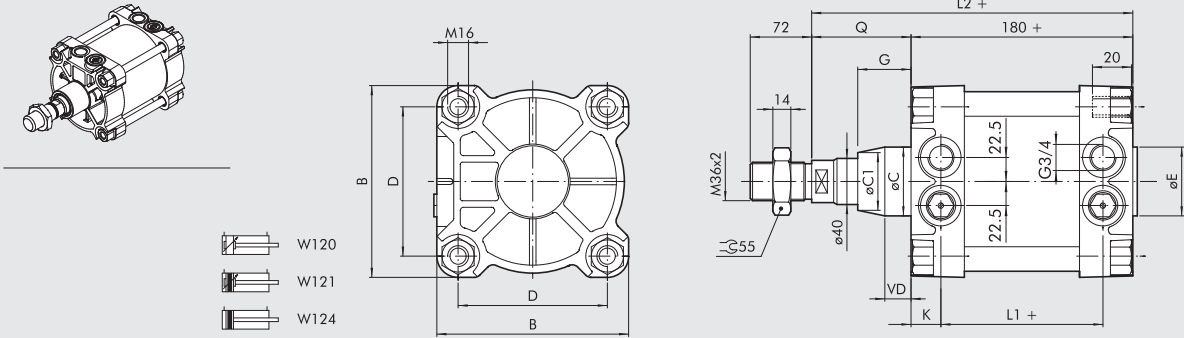
COMPONENTS

- ① PISTON ROD: C45 steel or stainless steel, thick chromed
- ② HEAD: die cast aluminium
- ③ PISTON ROD GASKET: NBR or FKM/FPM
- ④ GUIDE BUSHING: sintered bronze
- ⑤ BARREL: drawn anodised aluminium alloy
- ⑥ PISTON: aluminium
- ⑦ PISTON GASKET: NBR or FKM/FPM
- ⑧ MAGNET: plastoferrite
- ⑨ CUSHIONING CAP: aluminium
- ⑩ CUSHIONING GASKET: polyurethane or FKM/FPM
- ⑪ CUSHIONING NEEDLE: OT 58 with needle out movement safety system even when fully open
- ⑫ SCREWS: galvanised steel
- ⑬ TIE RODS: stainless steel
- ⑭ GUIDE BELT: technopolimer
- ⑮ STATIC O-RINGS: NBR or FKM/FPM



DIMENSIONS OF STANDARD VERSION

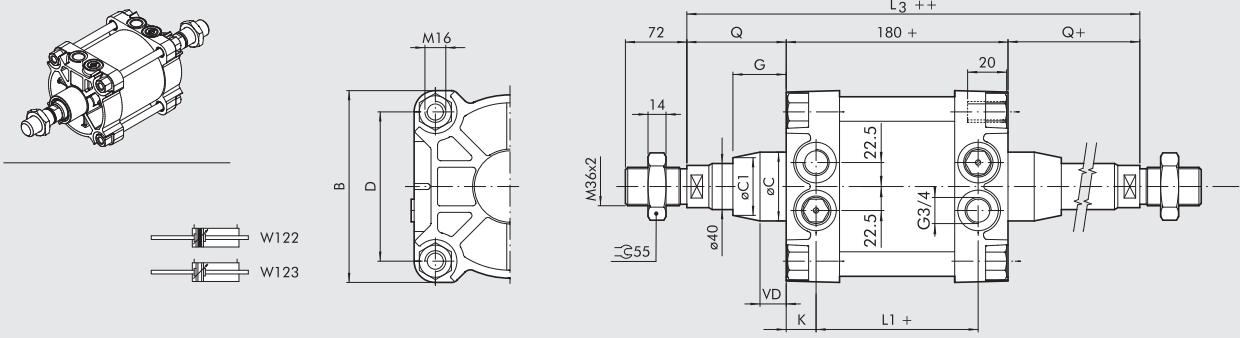
+ = ADD THE STROKE



Ø	B	eC	eC1	eE	D	G	L ₁	L ₂	Q	VD	K
160	180	65	-	65	140	50	124	260	80	-	28
200	220	75	~ 65	75	175	60	122	275	95	~ 15	29

DIMENSIONS OF THROUGH-ROD VERSION

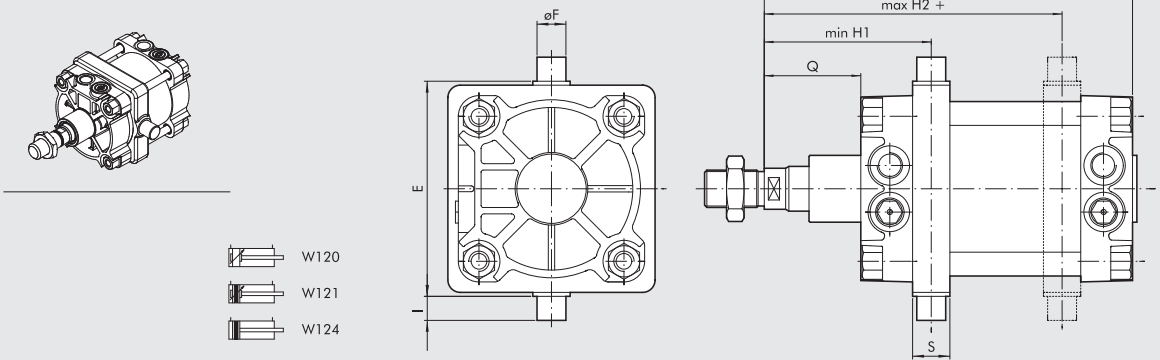
+ = ADD THE STROKE
 ++ = ADD TWICE THE STROKE



Ø	B	eC	eC1	D	G	L ₁	L ₃	Q	VD	K
160	180	65	-	140	50	124	340	80	-	28
200	220	75	~ 65	175	60	122	370	95	~ 15	29

DIMENSIONS OF VERSION WITH INTERMEDIATE HINGE

+ = ADD THE STROKE



Ø	E	eF	H1	H2	I	L2	Q	S
160	200	32	150	190	32	260	80	40
200	250	32	165	205	32	275	95	40

For the missing values, refer to standard cylinders. In your order, please specify the desired value for H1

KEY TO CODES FOR ROUND BARREL

CYL	W 1 2 1 TYPE	1 6 0 DIAMETER-EXECUTION	0 0 5 0 STROKE	0 2 0 0 EXECUTION
	W120 Double-acting, cushioned, non magnetic	160 160	+ 0025 to 2800 mm	Specify H1 value ONLY for version with intermediate hinge
	W121 Double-acting, cushioned,	200 200		
	W122 Double-acting, cushioned, through-rod	XA3 160 stainless steel piston rod		
	W123 Double-acting, cushioned, through-rod, non magnetic	XA4 200 stainless steel piston rod		
	W124 Double-acting, non-cushioned	VA3 160 FKM/FPM gasket, stainless steel piston rod		
		VA4 200 FKM/FPM gasket, stainless steel piston rod		
		KA3 160 FKM/FPM gasket, C45 piston rod		
		KA4 200 FKM/FPM gasket, C45 piston rod		
		AA3 160 + intermediate hinge		
		AA4 200 + intermediate hinge		
		● GA3 160 No stick-slip		
		● GA4 200 No stick-slip		

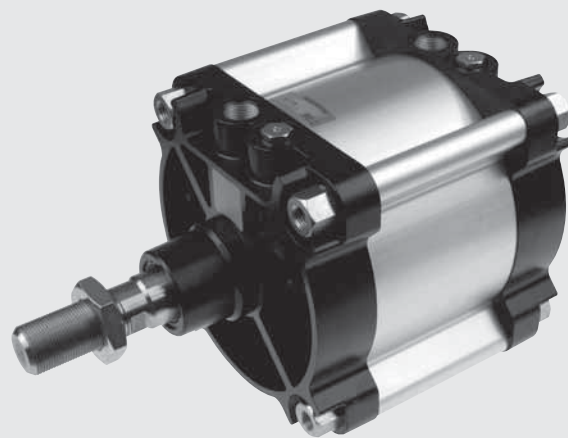
- + Maximum recommended strokes. Higher values can create operating problems
- For speeds lower than 0.2 m/s, to prevent surging. Use no-lubricated air only

VERSION WITH SHAPED BARREL

An alternative to the round barrel version is a version with a shaped barrel.

The technical data, components and dimensions are the same as for the round barrel version.

Note: Type with intermediate hinge not available.



KEY TO CODES FOR SHAPED BARREL

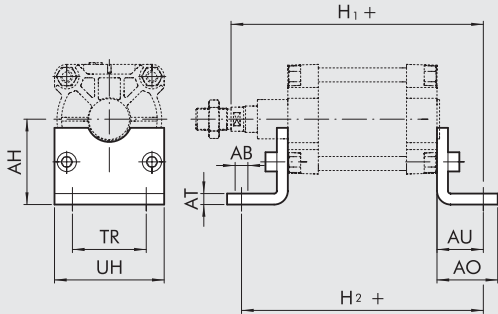
CYL	1 2 1 TYPE	1 6 0 DIAMETER-EXECUTION	0 0 5 0 STROKE	A MATERIAL	N GASKETS
	120 Double-acting, cushioned, non-magnetic	160 160	+ 0025 to 2800 mm	A C45 chromed, piston rod Z Stainless steel chromed, piston rod	N NBR gaskets V FKM/FPM gaskets
	121 Double-acting, cushioned,	200 200			
	122 Double-acting, cushioned, through-rod	SA3 160 non magnetic			
	124 Double-acting, non-cushioned	SA4 200 non magnetic			
		● GA3 160 No stick-slip			
		● GA4 200 No stick-slip			

- + Maximum recommended strokes. Higher values can create operating problems
- For speeds lower than 0.2 m/s, to prevent surging. Use no-lubricated air only

ACCESSORIES FOR ISO 15552 CYLINDERS Ø 160-200: FIXINGS

FOOT - MODEL A

+ = ADD THE STROKE

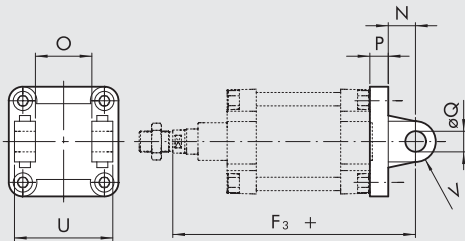


Code	Ø	AB	AH	AO	AT	AU	H ₁	H ₂	TR	UH	Weight [g]
W0951602001	160	18	115	80	10	60	319	300	115	180	2400
W0952002001	200	22	135	100	12	70	345	320	135	220	4000

Note: Individually packed with 2 screws

FEMALE HINGE - MODEL B

+ = ADD THE STROKE

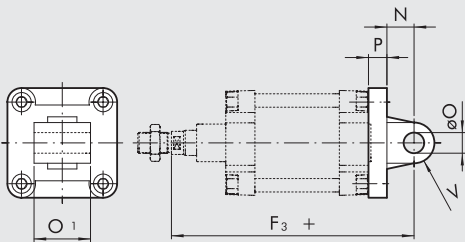


Code	Ø	U	O	øQ	P	N	F ₃	V	Weight [g]
W0951602003	160	170	90	30	20	35	314	25	3300
W0952002003	200	170	90	30	25	35	335	25	4300

Note: Supplied complete with 4 screws, 2 snap rings and 1 pin

MALE HINGE - MODEL BA

+ = ADD THE STROKE

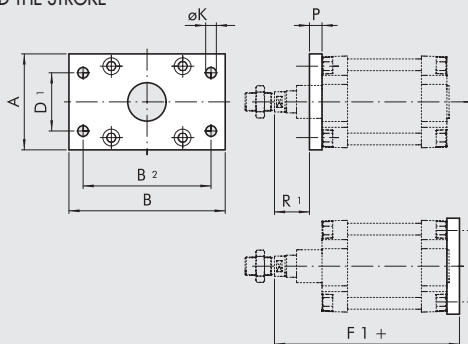


Code	Ø	O ₁	øO	P	N	F ₃	V	Weight [g]
W0951602004	160	90	30	20	35	314	25	2150
W0952002004	200	90	30	25	35	335	25	3550

Note: Supplied complete with 4 screws

FLANGE - MODEL C (FRONT AND REAR)

+ = ADD THE STROKE

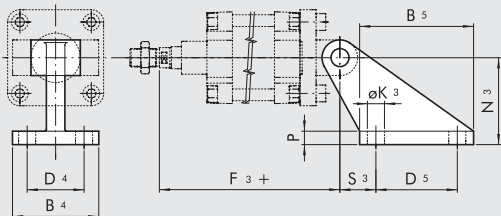


Code	Ø	A	B	B ₂	D ₁	øK	R ₁	P	F ₁	Weight [g]
W0951602002	160	180	270	230	115	18	59	20	279	6900
W0952002002	200	225	312	270	135	22	70	25	300	12800

Note: Individually packed with 4 screws

CETOP COUNTER-HINGE - MODEL GL

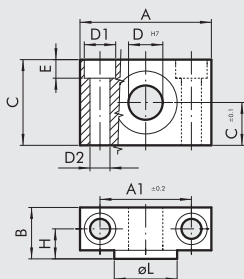
±= ADD THE STROKE



Code	Ø	B ₄	B ₅	D ₄	D ₅	N ₂	N ₃	S ₃	øK ₃	P	F ₃	Weight [g]
W0951602008	160	110	154	63	110	55	140	50	18	20	314	2300
W0951602008	200	110	154	63	110	60	140	50	18	20	335	2300

Note: Supplied complete with 4 screws, 4 washers

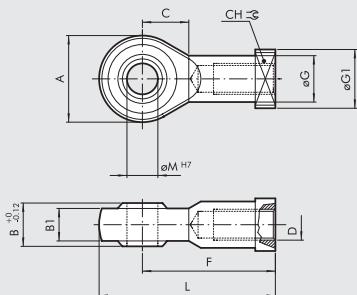
COUNTER-HINGE MODEL EL



Code	Ø	A	A ₁	B	C	C ₁	D ₁	D ₂	D	E	H	øL	Weight [g]
W0951602009	160	92	60	40	60	30	25	17	32	16.5	22.5	48	2740
W0951602009	200	92	60	40	60	30	25	17	32	16.5	22.5	48	2740

Note: 2-pieces pack with 4 screws

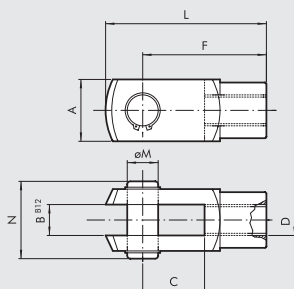
ROD EYE - MODEL GA-M



Code	Ø	øM	C	B ₁	B	A	L	F	D	øG	CH	øG ₁	Weight [g]
W0952002025	160	35	41	28	43	80	165	125	M36x2	46	50	58	1645
W0952002025	200	35	41	28	43	80	165	125	M36x2	46	50	58	1645

Note: Individually packed

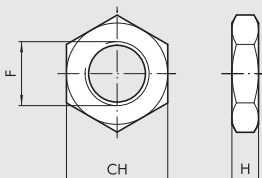
FORK - MODEL GK-M



Code	Ø	øM	C	B	A	L	F	D	N	Weight [g]
W0951602020	160	35	72	35	70	188	144	M36x2	84	3850
W0951602020	200	35	72	35	70	188	144	M36x2	84	3850

Note: Individually packed

ROD NUT - MODEL S



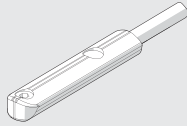
Code	Ø	F	H	CH	Weight [g]
W0951602010	160	M36x2	14	55	170
W0951602010	200	M36x2	14	55	170

Note: Individually packed

ACCESSORIES FOR ISO 15552 CYLINDERS Ø 160-200: MAGNETIC SENSORS

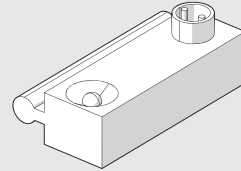
RETRACTABLE SENSOR

SENSOR, OVAL TYPE
Traditional



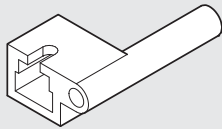
For codes and technical data, see **chapter A6**.

SENSOR SERIES DSM



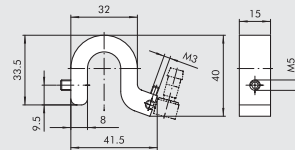
For codes and technical data, see **chapter A6**.

ADAPTOR FOR RETRACTABLE SENSOR



Code	Description
W0950001001	Adaptor DSS005 for DST/ST brackets

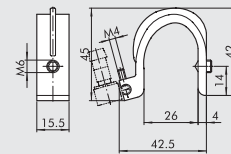
SENSOR SUPPORT BRACKET FOR STANDARD VERSION (WITH ROUND BARREL)



Code	Description
0951602093	Bracket 160-200

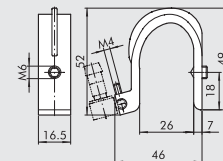
SENSOR SUPPORT BRACKET FOR OLD VERSION BARREL (SHAPED)

Ø 160



Code	Description
W0950000715	Bracket ST 160

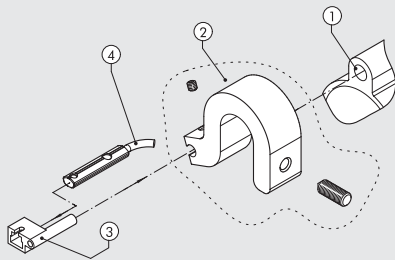
Ø 200



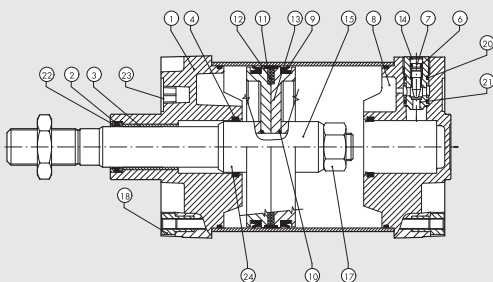
Code	Description
W0950000716	Bracket ST 200

ASSEMBLY DIAGRAM

- ISO 15552 cylinder with traditional barrel
- Sensor bracket mod. ST (Ø 160 and 200)
- Adaptor
- Retractable sensor "oval type"



CYLINDERS ISO 15552 Ø 160-200: SPARE PARTS



Code	Bores	Type	Parts
W095__2101	160 - 200	Complete set of gaskets	2-4-5-6-9-10-20-22
W0951602165	160 - 200	NBR piston rod gasket kit + seeger	2
W0951602166	160 - 200	FKM/FPM piston rod gasket kit + seeger	2
W095__2102	160 - 200	Complete set of (high temperature) FKM/FPM gaskets	2-4-5-6-9-10-20-22
W095__0104	160 - 200	Complete front head kit	1-2-3-4-5-6-7-14-18-20-21-22-23
W095__0105	160 - 200	Complete rear head kit	4-5-6-7-8-14-18-20-21-23
W095__2115	160 - 200	Complete magnetic piston kit	9-10-11-12-13-15-17-24
W095__2118	160 - 200	Complete non-magnetic piston kit	9-10-11-13-15-17-24
W095__2120	160 - 200	Complete head A + P + non-magnetic piston	1-2-3-4-5-6-7-8-9-10-11-13-14-15-17-18-20-21-22-23-24
W095__2119	160 - 200	Complete head A + P + magnetic piston	1-2-3-4-5-6-7-8-9-10-11-12-13-14-15-17-18-20-21-22-23-24
W095__2300	160 - 200	Magnet	12