

Applications

- One touch type pipe connection tool for air pressure piping.
- Various uses depending on the user's environment.

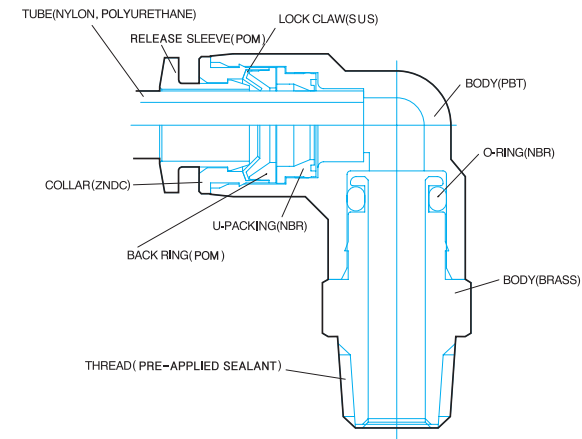
Features

- One action inserts the tube to release and connect easily.
- The PC type has interior and exterior hexagonal shapes for efficient piping in limited spaces.
- The main body of the PL and PT types is a rotating structure for efficient piping.
- The screw section has O-ring, or Teflon coated.

Specifications

- Fluid type : Air (No other gases or liquids)
- Working pressure : 0~150PSI / 0~9.9Kgf/cm² (0~990kPa)
- Negative pressure : -29.5 in Hg / -750mmHg (-750Torr)
- Working temperature : 32~140° F / 0~60° C
- Applicable Tube : Polyurethane and Nylon

Structural Diagram



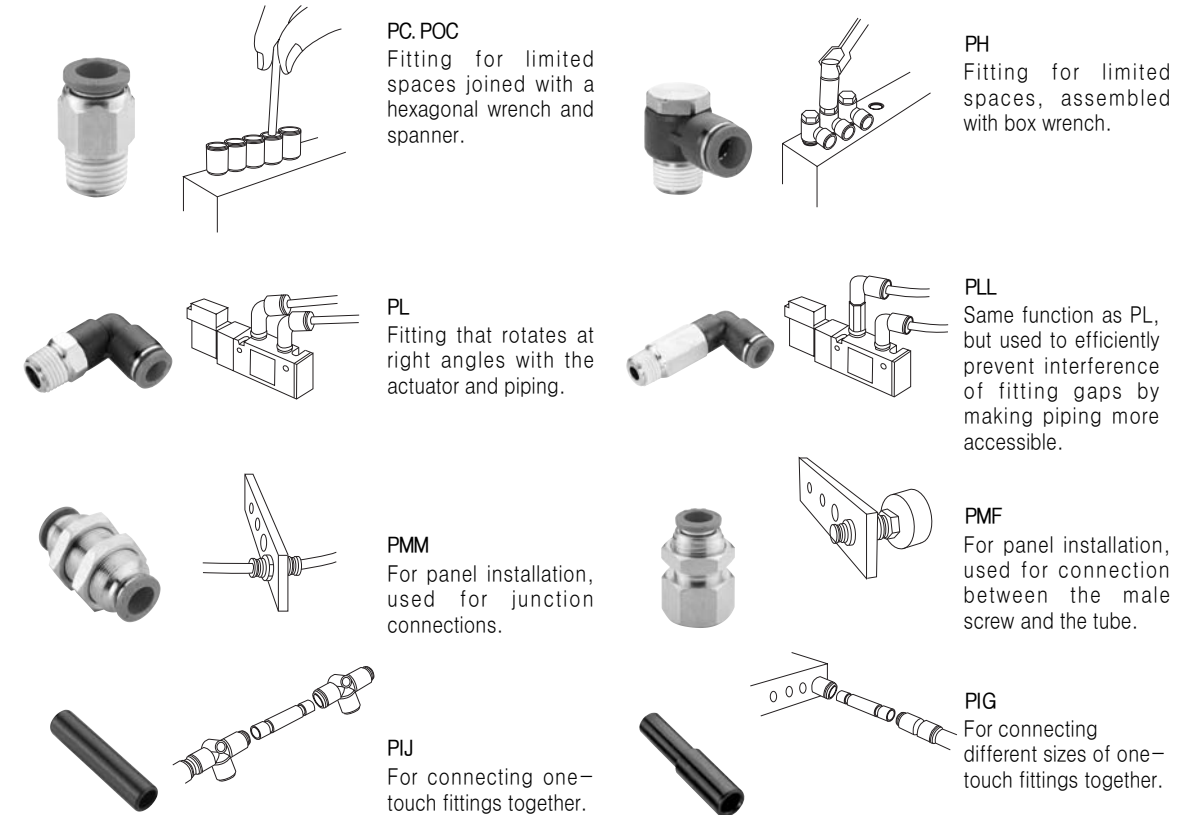
Conversion

kgf/cm ²	bar	Pa(N/m ²)	atm	mHg	lbf/in ²
1	0.980665	0.980665E5	0.9678	0.7356	14.22
1.0197	1	1E-5	0.9869	0.7501	14.50
1.0197E-5	1E-5	1	0.9869E-5	7.501E-6	1.450E-4
1.0332	1.0325	1.0325E5	1	0.760	14.70
1.3595	1.3332	1.3332E5	1.3158	1	19.34
0.07031	0.06895	6.895E3	0.06805	0.05171	1

Applied example

- The interior and exterior hexagonal part can be assembled using a spanner and hexagonal wrench in screw joining.
- The injection body of the PL and PT models rotates to allow direction changes according to piping direction.
- The sleeve is circular so that it is free of equipment setting.

Form



Product Code System

METRIC - BSPT(R)

PC 06-01-N

OneTouch Fitting	Tube Dia		Thread Size		Plating	Sleeve Color
	CODE	SIZE	METRIC THREAD			
	04	Ø4	M5	M5×0.8	Nickel	Blue
	06	Ø6	M6	M6×1.0		
	08	Ø8	R(PT) THREAD			
	10	Ø10				
	12	Ø12	01	R1/8		
	16	Ø16	02	R1/4		
			03	R3/8		
			04	R1/2		

METRIC - BSPP(G)

PC 06-G01

OneTouch Fitting	Tube Dia		Thread Size		Sleeve Color
	CODE	SIZE	METRIC THREAD		
	04	Ø4	M5	M5×0.8	Blue
	06	Ø6	M6	M6×1.0	
	08	Ø8	G(PF) THREAD		
	10	Ø10			
	12	Ø12	G01	G1/8	
	16	Ø16	G02	G1/4	
			G03	G3/8	
			G04	G1/2	

INCH - BSPT(R)

PC-1/4-01

OneTouch Fitting	Tube Dia		Thread Size	
	CODE	SIZE	R(PT) THREAD	
	5/32	Ø5/32	01	R1/8
	3/16	Ø3/16	02	R1/4
	1/4	Ø1/4	03	R3/8
	5/16	Ø5/16	04	R1/2
	3/8	Ø3/8		
	1/2	Ø1/2		

INCH - NPT

PC-1/4-N1

OneTouch Fitting	Tube Dia		Thread Size	
	CODE	SIZE	UNF THREAD	
	5/32	Ø5/32	U	10-32UNF
	3/16	Ø3/16	NPT THREAD	
	1/4	Ø1/4	N1	NPT1/8
	5/16	Ø5/16	N2	NPT1/4
	3/8	Ø3/8	N3	NPT3/8
	1/2	Ø1/2	N4	NPT1/2

CAUTION

- Be sure to refer to the Safety Caution, Classification of Warning Indications (P7), and Common Caution of Fitting Products (P8) before use.
- Assemble the fitting according to the proper connection torque value (P7).
- Proper torque refers to connection by hand and 2~3 rotations using a tool. Excessive pressure may damage the screw.
- To insert the tube into the fitting, cut the tube at a right angle, insert it fully to the end, and pull the tube gently to make sure it isn't released.
- Avoid piping under tension, and also avoid high curvature piping at the tube insertion section of the fitting.

WARNING

- Be sure to prevent pressure buildup due to twisting, pulling, and bending of the fitting product. This may cause product damage or air leakage.
- When the applied fluid is water, do not use the product if it does not meet all specifications. Fitting damage, tube release, and compressed air leakage may occur.

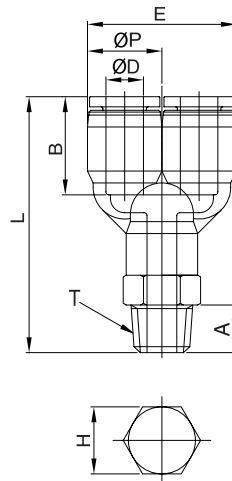
M_cddY]b['Vi]hYbXfUUX

PWT



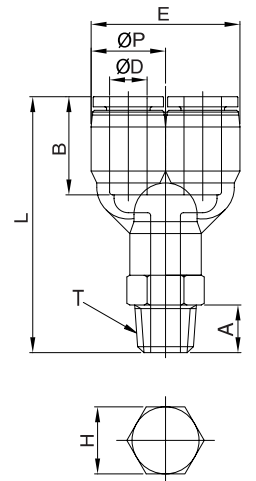
METRIC-BSPT(R)

MODEL	ØD	ØP	T	L	E	A	B	H(Hex)	ORFICE	WEIGHT(g)	BOX(EA)
PWT 04-M5			M5×0.8p	41.1		4.6		10	2.5	10.6	100
PWT 04-M6			M6×1.0p	41.1		4.1		10	2.5	10.6	100
PWT 04-01	4	10.5	R1/8	43.6	21.0	8.0	15.7	10	3.0	11.6	100
PWT 04-02			R1/4	45.6		10.0		14	3.0	17.6	100
PWT 04-03			R3/8	46.6		11.0		17	3.0	25.6	50
PWT 06-M5			M5×0.8p	42.0		4.6		12	2.5	15.4	50
PWT 06-M6			M6×1.0p	40.6		4.1		12	3.0	15.4	50
PWT 06-01	6	12.5	R1/8	44.5	25.0	8.0	17.0	12	4.5	18.4	50
PWT 06-02			R1/4	47.5		10.0		14	4.5	19.4	50
PWT 06-03			R3/8	48.5		11.0		17	4.5	31.4	50
PWT 06-04			R1/2	51.5		14.0		21	4.5	45.4	25
PWT 08-01			R1/8	47.9		8.0		14	6.0	19.4	50
PWT 08-02	8	14.8	R1/4	50.9	29.0	10.0	19.1	14	6.0	25.4	50
PWT 08-03			R3/8	51.9		11.0		17	6.0	33.4	50
PWT 08-04			R1/2	54.9		14.0		21	6.5	51.4	25
PWT 10-01			R1/8	51.2		8.0		17	6.0	31.4	25
PWT 10-02	10	17.5	R1/4	54.2	35.2	10.0	20.2	17	7.0	36.4	25
PWT 10-03			R3/8	55.2		11.0		17	7.0	38.4	25
PWT 10-04			R1/2	58.2		14.0		21	7.0	58.4	25
PWT 12-01			R1/8	57.2		8.0		19	6.0	48.2	25
PWT 12-02	12	20.5	R1/4	59.2	42.0	10.0	22.7	19	7.0	51.2	25
PWT 12-03			R3/8	60.2		11.0		19	10.0	50.2	25
PWT 12-04			R1/2	63.2		14.0		21	10.0	62.2	25



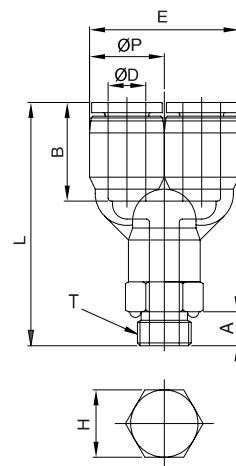
INCH-NPT

MODEL	ØD	ØP	T	L	E	A	B	H(Hex)	ORFICE	WEIGHT(g)	BOX(EA)
PWT5/32-U			UNF10/32	38.1		3.6		7/16	2.5	10.6	100
PWT5/32-N1	5/32	10.5	NPT1/8	41.7	21.0	8.5	16.2	7/16	3.0	11.6	100
PWT5/32-N2			NPT1/4	44.7		10.5		9/16	3.0	17.6	50
PWT3/16-U			UNF10/32	41.8		3.6		7/16	3.0	10.4	50
PWT3/16-N1	3/16	11.5	NPT1/8	45.4	23.0	8.5	16.8	7/16	3.0	11.4	50
PWT3/16-N2			NPT1/4	48.4		10.5		9/16	3.0	17.4	50
PWT3/16-N3			NPT3/8	49.4		11.5		11/16	3.0	19.4	50
PWT1/4-U			UNF10/32	45.8		3.6		1/2	2.5	15.4	50
PWT1/4-N1	1/4	13.0	NPT1/8	47.7	26.0	8.5	17.3	1/2	4.5	18.4	50
PWT1/4-N2			NPT1/4	50.4		10.5		9/16	4.5	19.4	50
PWT1/4-N3			NPT3/8	51.4		11.5		11/16	4.5	31.4	50
PWT5/16-N1			NPT1/8	47.0		8.5		9/16	6.0	19.4	50
PWT5/16-N2	5/16	14.5	NPT1/4	49.0	29.0	10.5	18.2	9/16	6.0	28.4	50
PWT5/16-N3			NPT3/8	50.0		11.5		11/16	6.0	29.4	50
PWT5/16-N4			NPT1/2	53.0		14.5		7/8	6.0	49.4	25
PWT3/8-N1			NPT1/8	52.7		8.5		11/16	5.0	28.4	25
PWT3/8-N2	3/8	17.5	NPT1/4	54.7	35.0	10.5	19.9	11/16	7.0	36.4	25
PWT3/8-N3			NPT3/8	55.7		11.5		11/16	7.0	38.4	25
PWT3/8-N4			NPT1/2	58.7		14.5		7/8	7.0	58.4	25
PWT1/2-N2			NPT1/4	64.6		10.5		3/4	7.0	58.0	25
PWT1/2-N3	1/2	21.0	NPT3/8	65.6	42.0	11.5	23.0	3/4	7.0	68.0	25
PWT1/2-N4			NPT1/2	68.6		14.5		7/8	7.0	78.0	20



METRIC-BSPP(G)

MODEL	ØD	ØP	T	L	E	A	B	H(Hex)	ORFICE	WEIGHT(g)	BOX(EA)
PWT04-G01			G1/8	41.6		5.0		14	3.0	14.6	100
PWT04-G02	4	10.5	G1/4	43.6	21.0	6.5	15.7	17	3.0	18.6	100
PWT04-G03			G3/8	43.6		6.5		20	3.0	22.6	50
PWT06-G01			G1/8	42.5		5.0		14	4.0	17.4	50
PWT06-G02	6	12.5	G1/4	44.5	25.0	6.5	17.0	17	4.0	22.4	50
PWT06-G03			G3/8	44.5		6.5		20	4.0	26.4	50
PWT06-G04			G1/2	45.5		8.0		24	4.0	37.4	25
PWT08-G01			G1/8	45.9		5.0		14	6.0	18.4	50
PWT08-G02	8	14.5	G1/4	47.9	29.0	6.5	19.0	17	6.0	25.4	50
PWT08-G03			G3/8	47.9		6.5		20	6.0	30.4	50
PWT08-G04			G1/2	48.9		8.0		24	6.0	40.4	25
PWT10-G01			G1/8	49.2		5.0		17	6.0	29.4	25
PWT10-G02	10	17.5	G1/4	51.2	35.2	6.5	20.2	17	7.0	28.4	25
PWT10-G03			G3/8	51.2		6.5		20	7.0	35.4	25
PWT10-G04			G1/2	52.2		8.0		24	7.0	47.4	25
PWT12-G02			G1/4	56.2		6.5		19	8.0	44.2	25
PWT12-G03	12	20.5	G3/8	56.2	42.0	6.5	22.7	20	9.0	45.2	25
PWT12-G04			G1/2	57.2		8.0		24	9.0	58.2	25



INCH-BSPT(R)

MODEL	ØD	ØP	T	L	E	A	B	H(Hex)	ORFICE	WEIGHT(g)	BOX(EA)
PWT1/4-01			R1/8	46.9		8.0		12	4.0	18.4	50
PWT1/4-02	1/4	13.0	R1/4	49.9	26.0	10.0	17.3	14	4.0	19.4	50
PWT1/4-03			R3/8	50.9		11.0		17	4.0	31.4	50
PWT5/16-01			R1/8	45.5		8.0		14	6.0	19.4	50
PWT5/16-02	5/16	14.5	R1/4	48.5	29.0	10.0	18.2	14	6.0	28.4	50
PWT5/16-03			R3/8	49.5		11.0		17	6.0	29.4	50
PWT3/8-02			R1/4	54.2		10.0		17	7.0	36.4	25
PWT3/8-03	3/8	17.5	R3/8	55.2	35.0	11.0	19.9	17	7.0	38.4	25
PWT3/8-04			R1/2	58.2		14.0		21	7.0	58.4	25
PWT1/2-02			R1/4	64.1		10.0		19	7.0	58.0	25
PWT1/2-03	1/2	21.0	R3/8	65.1	42.0	11.0	23.0	19	9.0	68.0	25
PWT1/2-04			R1/2	68.1		14.0		21	9.0	78.0	20

