

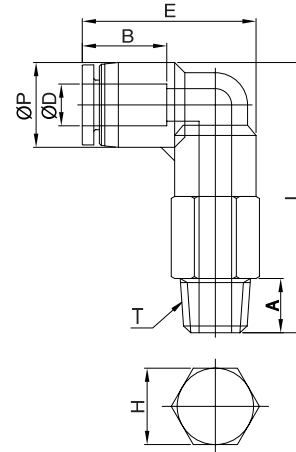
?b]Y]bgW fcYZ_cddY]b['j Yf`Yb[X

PLL



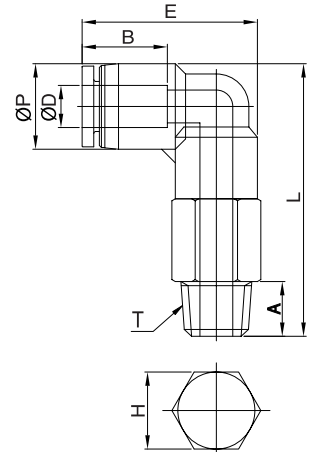
METRIC-BSPT(R)

MODEL	ØD	ØP	T	L	E	A	B	H(Hex)	ORIFICE	WEIGHT(g)	BOX(EA)
PLL 04-M5	4	10.5	M5×0.8p	38.8	23.8	4.6	16.8	10	2.0	15.8	50
PLL 04-M6			M6×1.0p	38.5		10		3.0	15.8	50	
PLL 04-01			R1/8	40.8		8.0		10.0	15.8	50	
PLL 04-02			R1/4	42.8		10.0		14.0	26.8	50	
PLL 04-03	R3/8	43.8	11.0	17.0	3.0	40.8	50				
PLL 06-M5	6	12.5	M5×0.8p	44.3	26.5	4.6	17.6	12	2.0	27.7	50
PLL 06-M6			M6×1.0p	44.0		12		3.0	27.7	50	
PLL 06-01			R1/8	46.3		8.0		10.0	27.7	50	
PLL 06-02			R1/4	48.3		10.0		14.0	34.7	50	
PLL 06-03	R3/8	49.3	11.0	17.0	4.5	45.7	50				
PLL 06-04	R1/2	52.3	14.0	21.0	4.0	69.7	25				
PLL 08-01	8	14.8	R1/8	51.2	29.7	8.0	18.7	14	6.0	35.7	50
PLL 08-02			R1/4	53.2		10.0		6.0	39.7	50	
PLL 08-03			R3/8	54.2		11.0		17.0	6.0	55.7	25
PLL 08-04			R1/2	57.2		14.0		22.0	6.0	99.7	25
PLL 10-01	10	17.5	R1/8	48.5	32.1	8.0	19.6	17	6.0	60.2	25
PLL 10-02			R1/4	50.5		10.0		7.0	64.2	25	
PLL 10-03			R3/8	51.5		11.0		17.0	7.0	63.2	25
PLL 10-04			R1/2	54.5		14.0		22.0	7.0	99.2	25
PLL 12-01	12	20.5	R1/8	64.2	36.9	8.0	21.9	19	8.0	89.1	25
PLL 12-02			R1/4	66.2		10.0		8.0	89.1	25	
PLL 12-03			R3/8	67.2		11.0		19.0	10.0	89.1	25
PLL 12-04			R1/2	70.2		14.0		22.0	10.0	106.1	25



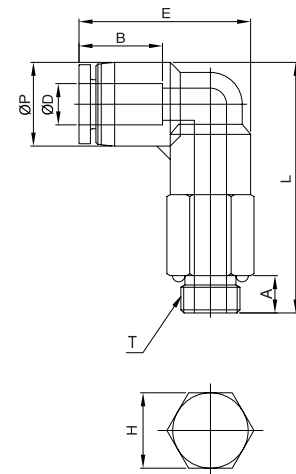
INCH-NPT

MODEL	ØD	ØP	T	L	E	A	B	H(Hex)	ORIFICE	WEIGHT(g)	BOX(EA)
PLL-5/32-U	5/32	10.5	UNF10/32	32.5	18.6	3.6	16.2	7/16	2.0	15.8	100
PLL-5/32-N1			NPT1/8	35.5		3.0		17.8	100		
PLL-5/32-N2			NPT1/4	38.5		10.5		3.0	31.8	50	
PLL-3/16-U	3/16	11.5	UNF10/32	32.5	19.1	3.6	16.8	7/16	2.0	15.7	50
PLL-3/16-N1			NPT1/8	35.5		8.5		17.7	50		
PLL-3/16-N2			NPT1/4	38.5		10.5		3.0	31.7	50	
PLL-3/16-N3	NPT3/8	38.5	11.5	3.0	39.7	50					
PLL-1/4-U	1/4	13.0	UNF10/32	37.5	20.4	3.6	17.3	1/2	2.0	27.7	50
PLL-1/4-N1			NPT1/8	41.3		8.5		28.7	50		
PLL-1/4-N2			NPT1/4	44.0		10.5		4.5	34.7	50	
PLL-1/4-N3	NPT3/8	45.0	11.5	4.5	49.7	50					
PLL-5/16-N1	5/16	14.5	NPT1/8	44.4	22.3	8.5	18.2	9/16	6.0	35.7	50
PLL-5/16-N2			NPT1/4	46.4		10.5		6.0	39.7	50	
PLL-5/16-N3			NPT3/8	50.4		11.5		6.0	59.7	25	
PLL-3/8-N2	3/8	17.5	NPT1/4	50.0	23.9	10.5	19.9	11/16	7.0	64.2	25
PLL-3/8-N3			NPT3/8	51.0		11.5		7.0	69.2	25	
PLL-3/8-N4			NPT1/2	54.0		14.5		7.0	99.2	20	
PLL-1/2-N2	1/2	21.0	NPT1/4	57.5	28.5	10.5	23.0	3/4	8.0	89.0	20
PLL-1/2-N3			NPT3/8	58.5		11.5		9.0	119.0	20	
PLL-1/2-N4			NPT1/2	61.5		14.5		9.0	159.0	20	



METRIC-BSPP(G)

MODEL	ØD	ØP	T	L	E	A	B	H(Hex)	ORIFICE	WEIGHT(g)	BOX(EA)
PLL04-G01	4	10.5	G 1/8	39.4	23.8	5.0	16.8	14	2.0	26.8	50
PLL04-G02			G 1/4	41.4		6.5		17.0	2.0	38.8	50
PLL04-G03			G 3/8	42.9		6.5		20.0	2.0	53.8	50
PLL06-G01	6	12.5	G 1/8	45.6	26.5	5.0	17.6	14	4.0	30.7	50
PLL06-G02			G 1/4	47.6		6.5		17.0	4.0	41.7	50
PLL06-G03			G 3/8	48.6		6.5		20.0	4.0	55.7	50
PLL08-G01	8	14.5	G 1/8	50.9	29.7	5.0	18.7	14	6.0	33.7	50
PLL08-G02			G 1/4	52.9		6.5		17.0	6.0	50.7	50
PLL08-G03			G 3/8	53.9		6.5		20.0	6.0	61.7	25
PLL08-G04			G 1/2	54.9		8.0		24.0	6.0	101.7	25
PLL10-G01	10	17.5	G 1/8	55.4	32.1	5.0	19.6	17	6.0	58.2	25
PLL10-G02			G 1/4	57.4		6.5		17.0	8.0	55.2	25
PLL10-G03			G 3/8	58.4		6.5		20.0	8.0	72.2	25
PLL10-G04			G 1/2	59.4		8.0		24.0	8.0	102.2	25
PLL12-G02	12	20.5	G 1/4	66.4	36.9	6.5	21.9	19	8.0	82.1	25
PLL12-G03			G 3/8	67.4		6.5		20.0	10.0	84.1	25
PLL12-G04			G 1/2	68.4		8.0		24.0	10.0	118.1	25



INCH-BSPT(R)

MODEL	ØD	ØP	T	L	E	A	B	H(Hex)	ORIFICE	WEIGHT(g)	BOX(EA)
PLL1/4-01	1/4	13.0	R1/8	40.8	20.4	8.0	17.3	12	4.0	28.7	50
PLL1/4-02	1/4	13.0	R1/4	42.5	20.4	10.0	17.3	14	4.0	34.7	50
PLL5/16-01	5/16	14.5	R1/8	43.9	22.3	8.0	18.2	14	6.0	35.7	50
PLL5/16-02	5/16	14.5	R1/4	45.9	22.3	10.0	18.2	14	6.0	39.7	50
PLL3/8-02	3/8	17.5	R1/4	49.7	23.9	10.0	19.9	17	7.0	64.2	25
PLL3/8-03	3/8	17.5	R3/8	50.7	23.9	11.0	19.9	17	7.0	69.2	25

