

Applications

- One touch type pipe connection tool for air pressure piping.
- Various uses depending on the user's environment.

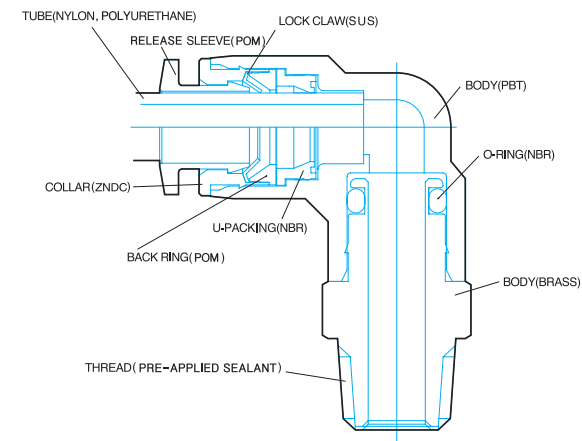
Features

- One action inserts the tube to release and connect easily.
- The PC type has interior and exterior hexagonal shapes for efficient piping in limited spaces.
- The main body of the PL and PT types is a rotating structure for efficient piping.
- The screw section has O-ring, or Teflon coated.

Specifications

- Fluid type : Air (No other gases or liquids)
- Working pressure : 0~150PSI / 0~9.9Kgf/cm² (0~990kPa)
- Negative pressure : -29.5 in Hg / -750mmHg (-750Torr)
- Working temperature : 32~140° F / 0~60° C
- Applicable Tube : Polyurethane and Nylon

Structural Diagram



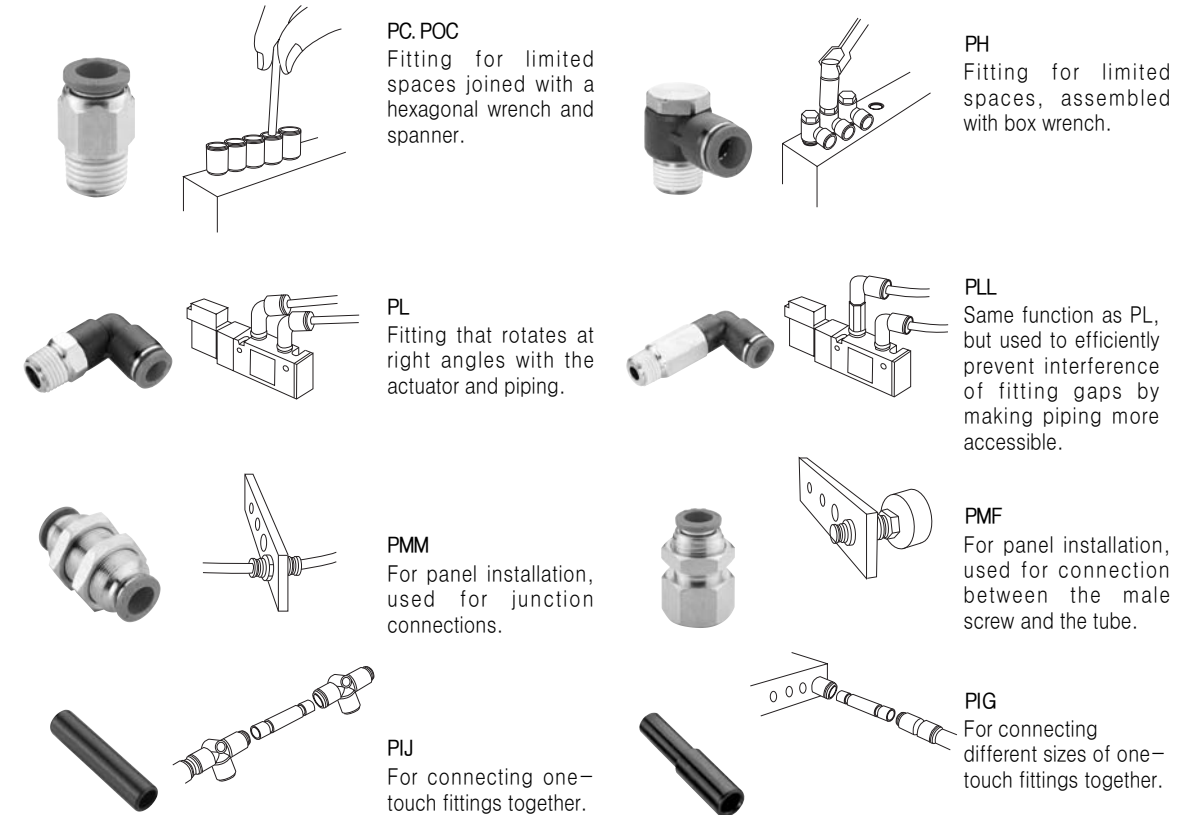
Conversion

kgf/cm ²	bar	Pa(N/m ²)	atm	mHg	lbf/in ²
1	0.980665	0.980665E5	0.9678	0.7356	14.22
1.0197	1	1E-5	0.9869	0.7501	14.50
1.0197E-5	1E-5	1	0.9869E-5	7.501E-6	1.450E-4
1.0332	1.0325	1.0325E5	1	0.760	14.70
1.3595	1.3332	1.3332E5	1.3158	1	19.34
0.07031	0.06895	6.895E3	0.06805	0.05171	1

Applied example

- The interior and exterior hexagonal part can be assembled using a spanner and hexagonal wrench in screw joining.
- The injection body of the PL and PT models rotates to allow direction changes according to piping direction.
- The sleeve is circular so that it is free of equipment setting.

Form



Product Code System

METRIC - BSPT(R)

PC 06-01-N

OneTouch Fitting	Tube Dia		Thread Size		Plating	Sleeve Color
	CODE	SIZE	METRIC THREAD			
	04	Ø4	M5	M5×0.8	Nickel	Blue
	06	Ø6	M6	M6×1.0		
	08	Ø8	R(PT) THREAD			
	10	Ø10				
	12	Ø12				
	16	Ø16	01	R1/8		
			02	R1/4		
			03	R3/8		
			04	R1/2		

METRIC - BSPP(G)

PC 06-G01

OneTouch Fitting	Tube Dia		Thread Size		Sleeve Color
	CODE	SIZE	METRIC THREAD		
	04	Ø4	M5	M5×0.8	Blue
	06	Ø6	M6	M6×1.0	
	08	Ø8	G(PF) THREAD		
	10	Ø10			
	12	Ø12			
	16	Ø16	G01	G1/8	
			G02	G1/4	
			G03	G3/8	
			G04	G1/2	

INCH - BSPT(R)

PC-1/4-01

OneTouch Fitting	Tube Dia		Thread Size	
	CODE	SIZE	R(PT) THREAD	
	5/32	Ø5/32	01	R1/8
	3/16	Ø3/16	02	R1/4
	1/4	Ø1/4	03	R3/8
	5/16	Ø5/16	04	R1/2
	3/8	Ø3/8		
	1/2	Ø1/2		

INCH - NPT

PC-1/4-N1

OneTouch Fitting	Tube Dia		Thread Size	
	CODE	SIZE	UNF THREAD	
	5/32	Ø5/32	U	10-32UNF
	3/16	Ø3/16	NPT THREAD	
	1/4	Ø1/4		
	5/16	Ø5/16	N1	NPT1/8
	3/8	Ø3/8	N2	NPT1/4
	1/2	Ø1/2	N3	NPT3/8
			N4	NPT1/2

CAUTION

- Be sure to refer to the Safety Caution, Classification of Warning Indications (P7), and Common Caution of Fitting Products (P8) before use.
- Assemble the fitting according to the proper connection torque value (P7).
- Proper torque refers to connection by hand and 2~3 rotations using a tool. Excessive pressure may damage the screw.
- To insert the tube into the fitting, cut the tube at a right angle, insert it fully to the end, and pull the tube gently to make sure it isn't released.
- Avoid piping under tension, and also avoid high curvature piping at the tube insertion section of the fitting.

WARNING

- Be sure to prevent pressure buildup due to twisting, pulling, and bending of the fitting product. This may cause product damage or air leakage.
- When the applied fluid is water, do not use the product if it does not meet all specifications. Fitting damage, tube release, and compressed air leakage may occur.

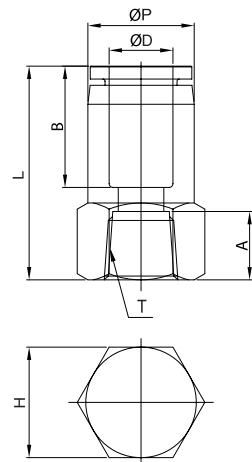
Rechte opschroefkoppeling

PCF



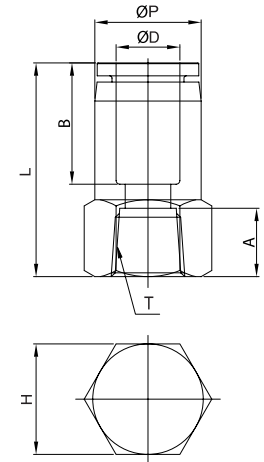
METRIC-BSPT(R)

MODEL	ØD	ØP	T	L	A	B	H(Hex)	ORIFICE	WEIGHT(g)	BOX(EA)
PCF 04-M5	4	10.0	M5×0.8p	25.6	7.0	15.9	12	3.5	8.8	100
PCF 04-01			Rc 1/8	26.7	8.0		14	3.5	15.8	100
PCF 04-02			Rc 1/4	28.7	10.0		17	3.5	19.8	100
PCF 04-03			Rc 3/8	29.7	11.0		22	3.5	33.8	100
PCF 06-M5	6	12.0	M5×0.8p	25.8	7.0	16.5	12	4.2	10.8	100
PCF 06-01			Rc 1/8	27.3	8.0		14	5.0	17.8	100
PCF 06-02			Rc 1/4	29.3	10.0		17	5.0	23.8	100
PCF 06-03			Rc 3/8	30.2	11.0		22	5.0	35.8	50
PCF 06-04			Rc 1/2	32.2	14.0		24	5.0	39.8	50
PCF 08-01	8	14.0	Rc 1/8	28.5	8.0	17.7	14	6.0	18.7	100
PCF 08-02			Rc 1/4	30.5	10.0		17	6.0	25.7	100
PCF 08-03			Rc 3/8	31.5	11.0		22	6.0	38.7	50
PCF 08-04			Rc 1/2	33.5	14.0		24	6.0	45.7	50
PCF 10-01	10	16.4	Rc 1/8	31.4	8.0	18.6	17	8.5	31.5	100
PCF 10-02			Rc 1/4	31.5	10.0		17	8.5	26.5	100
PCF 10-03			Rc 3/8	32.4	11.0		22	8.5	39.5	50
PCF 10-04			Rc 1/2	34.4	14.0		24	8.5	40.5	50
PCF 12-02	12	18.6	Rc 1/4	34.7	10.0	20.9	22	10.0	53.3	50
PCF 12-03			Rc 3/8	34.7	11.0		22	10.0	43.3	50
PCF 12-04			Rc 1/2	36.7	14.0		24	10.0	49.3	25



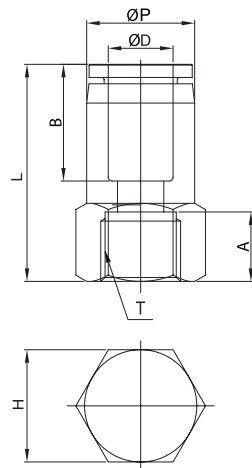
INCH-NPT

MODEL	ØD	ØP	T	L	A	B	H(Hex)	ORIFICE	WEIGHT(g)	BOX(EA)
PCF 5/32-N1	5/32	10.0	NPT1/8	27.6	8.5	15.3	9/16	3.5	15.8	100
PCF 5/32-N2			NPT1/4	29.6	10.5		11/16	3.5	19.8	100
PCF 3/16-N1	3/16	11.1	NPT1/8	28.2	8.5	16.8	9/16	4.0	15.8	100
PCF 3/16-N2			NPT1/4	30.2	10.5		11/16	4.0	19.8	100
PCF 1/4-N1	1/4	13.0	NPT1/8	28.7	8.5	17.4	9/16	5.0	18.8	100
PCF 1/4-N2			NPT1/4	30.7	10.5		11/16	5.0	23.8	100
PCF 1/4-N3			NPT3/8	32.7	11.5		7/8	5.0	39.8	50
PCF 5/16-N1	5/16	14.0	NPT1/8	29.0	8.5	18.7	9/16	6.0	18.7	100
PCF 5/16-N2			NPT1/4	31.0	10.5		11/16	6.0	25.7	100
PCF 5/16-N3			NPT3/8	32.0	11.5		7/8	6.0	38.7	50
PCF 5/16-N4			NPT1/2	35.9	14.5		15/16	6.0	45.7	50
PCF 3/8-N1	3/8	16.7	NPT1/8	31.8	8.5	20.2	11/16	8.0	29.4	100
PCF 3/8-N2			NPT1/4	32.6	10.5		11/16	8.0	26.4	100
PCF 3/8-N3			NPT3/8	34.1	11.5		7/8	8.0	39.4	50
PCF 3/8-N4			NPT1/2	37.8	14.5		15/16	8.0	41.4	25
PCF 1/2-N2	1/2	20.6	NPT1/4	36.2	10.5	22.0	7/8	10.0	53.1	25
PCF 1/2-N3			NPT3/8	37.6	11.5		7/8	10.0	45.1	25



METRIC-BSPP(G)

MODEL	ØD	ØP	T	L	A	B	H(Hex)	ORIFICE	WEIGHT(g)	BOX(EA)
PCF 04-G01	4	10.0	G 1/8	28.6	8.0	15.9	14	3.0	14.8	100
PCF 04-G02			G 1/4	29.6	10.0		17	3.0	19.8	100
PCF 04-G03			G 3/8	30.6	11.0		22	3.5	32.8	100
PCF 06-G01	6	12.0	G 1/8	30.0	8.0	16.5	14	5.0	15.8	100
PCF 06-G02			G 1/4	31.0	10.0		17	5.0	21.8	100
PCF 06-G03			G 3/8	32.0	11.0		22	5.0	34.8	50
PCF 08-G01	8	14.0	G 1/8	31.0	8.0	17.7	14	6.0	17.7	100
PCF 08-G02			G 1/4	32.0	10.0		17	6.0	23.7	100
PCF 08-G03			G 3/8	33.0	11.0		22	6.0	36.7	50
PCF 08-G04			G 1/2	35.0	14.0		24	6.0	36.7	50
PCF 10-G01	10	16.4	G 1/8	31.7	8.0	18.6	17	8.0	30.5	100
PCF 10-G02			G 1/4	32.7	10.0		17	8.0	25.5	100
PCF 10-G03			G 3/8	33.7	11.0		22	8.0	39.5	50
PCF 10-G04			G 1/2	35.7	14.0		24	8.0	39.5	50
PCF 12-G02	12	18.6	G 1/4	36.4	10.0	20.9	22	10.0	52.3	50
PCF 12-G03			G 3/8	36.4	11.0		22	10.0	44.3	50
PCF 12-G04			G 1/2	38.4	14.0		24	10.0	44.3	25



INCH-BSPT(R)

MODEL	ØD	ØP	T	L	A	B	H(Hex)	ORIFICE	WEIGHT(g)	BOX(EA)
PCF1/4-01	1/4	13.0	Rc1/8	28.7	8.0	17.4	14	5.0	18.8	100
PCF1/4-02	1/4	13.0	Rc1/4	30.7	10.0	17.4	17	5.0	23.8	100
PCF5/16-01	5/16	14.0	Rc1/8	28.5	8.0	18.7	17	6.0	18.7	100
PCF5/16-02	5/16	14.0	Rc1/4	30.5	10.0	18.7	17	6.0	25.7	100
PCF3/8-02	3/8	16.7	Rc1/4	32.6	10.0	20.2	17	8.0	26.4	100
PCF3/8-03	3/8	16.7	Rc3/8	34.1	11.0	20.2	22	8.0	39.4	50

