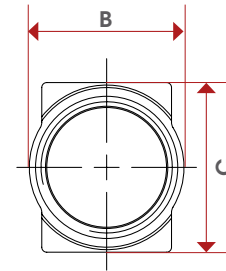
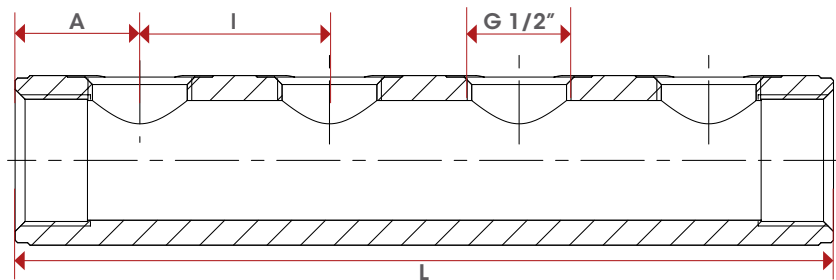


850



TEC



	3/4"		1"		1 1/4"
	l=38	l=50	l=38	l=50	l=50
L-2	88	100	98	110	110
L-3	126	150	136	160	160
L-4	164	200	174	210	210
L-5	202	250	212	260	260
L-6	240	300	250	310	310
L-7	278	350	288	360	360
L-8	316	400	326	410	410
L-9	354	450	364	460	460
L-10	392	500	402	510	510
L-11			440	560	560
L-12			478	610	610
A	25		30		30
B	31		37,5		47
C	34		37		50
Kg/cm ² bar	10		10		10
LBS - psi	145		145		145

