

FR14MD – FR18MD

Modular filter-regulators,
suitable for compressed air



FEATURES

Filter-regulator for inlet pressure up to 30 bar (435 psi).

Connections 1/4" – F and 1/8" – F.

Outlet pressure is controlled by a rubber diaphragm.

Filtration: 5, 20 or 50 µm.

Overpressure relieving function.

Modular design to couple with same series: filter and lubricator.

Holes for wall mounting.

Available semi-automatic or manual condensate drain.

The product complies with the directive 2014/68/EU PED.

Available on request:
ATEX 2014/34/EU
EAC-EX TP TC 012/2011 versions for the Russian market.

Available units composed of:
Filter-Regulator + Lubricator.

SPECIFICATIONS

Filter-regulator weight: ~0.32 kg/ ~0.72 lb (transparent bowl)

~0.47 kg/~1 lb (metallic bowl)

Standard version operating temperature: -10 °C ÷ +50 °C (+14 °F ÷ +122 °F)

Main valve leakage classification: VI (bubble tight)

Flow coefficient: Kv = 0.6

Bowl capacity: 45 cc / 1,5 US fl oz (metallic bowl)

30-45 cc / 1-1,5 US fl oz (transparent bowl)

G 1/8 port for outlet pressure gauge on both sides

Condensate level display for inlet pressure up to 20 bar

Manual or semi-automatic condensate drain

Semi-automatic drain SS: drain the condensate every time the downstream pressure is dumped.

MATERIALS

Body: zinc alloy

Bowl: zinc alloy or transparent plastic "CAB"

Bonnet: PA 6.6 / POM

Filter cartridges: 5 and 20 µm PE; 50 µm sintered bronze

Main valve spring: stainless steel AISI 302

Adjusting spring: C85/AISI 302 (not in contact with the fluid)

Diaphragm: NBR

Main valve gasket: NBR

O-Ring: NBR

Manual drain: brass

Semi-automatic drain: PA 6

ACCESSORIES

Ring-nut for panel or bracket mounting

Bracket for wall mounting (10 pcs)

Gauge

SPARE PARTS

Filter cartridges

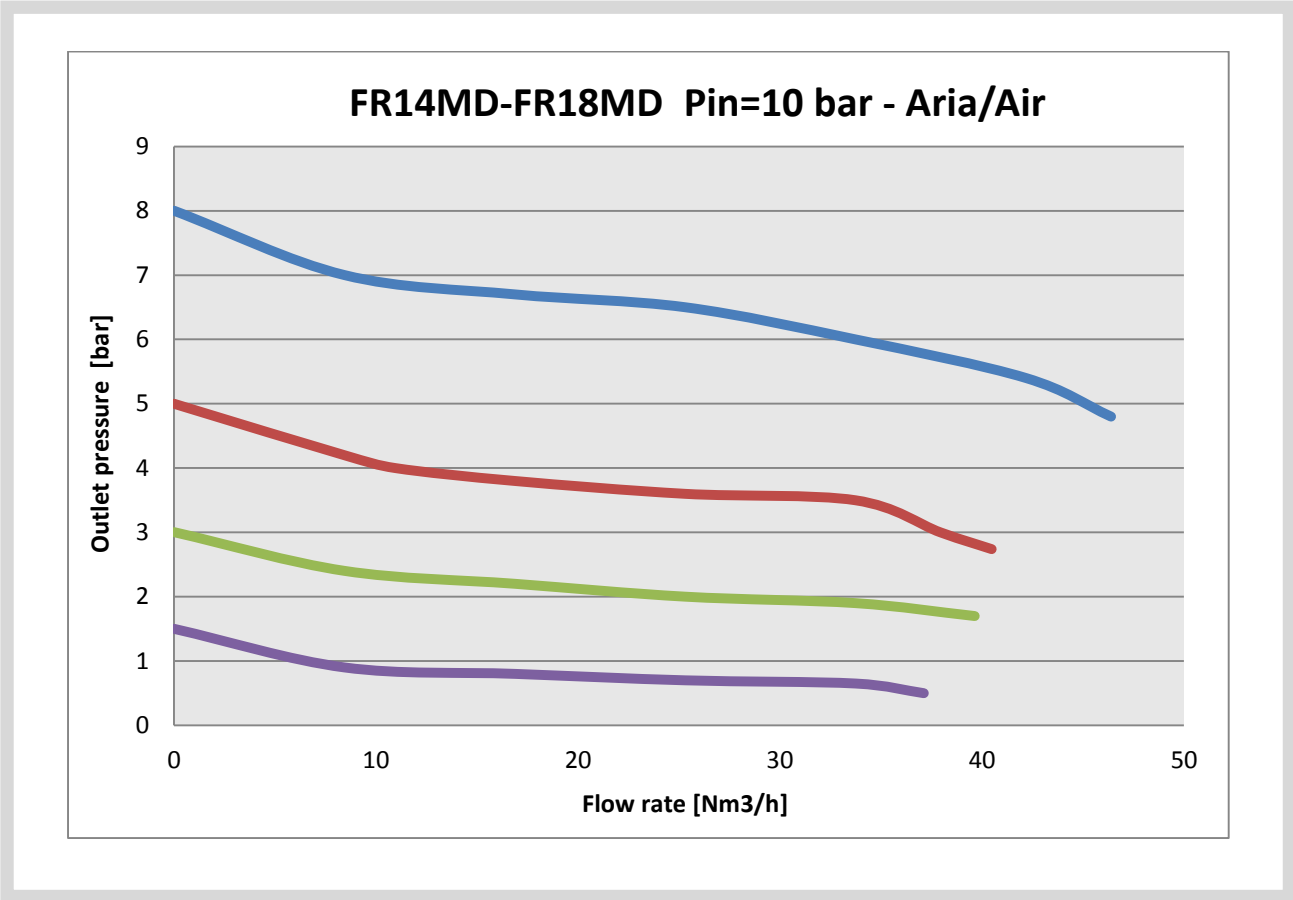
Complete kit: filter cartridge, o-ring, complete main valve, assembled diaphragm

Semi-automatic drain

Manual drain

Condensate display

flow charts



generating the product code

FR MD-18-14			
AA BB CC D E FF			
AA	Attacchi / Connections	M0	G 1/8 "
		N0	G 1/4 "
BB	Tazza / Bowl	01	Tazza LL SS - 16 bar
		02	Tazza LL SAI - 20 bar
		07	Tazza TraspSS -12 bar
		10	Tazza traspSS-30cc-12 bar
CC	Intervallo d'uscita/ Outlet range	A0	Pout 0,2 - 1,5 bar
		B0	Pout 0,3 - 3 bar
		D0	Pout 0,8-8 bar
		E0	Pout 1,5-15 bar
D	Filtrante / Filter	D	5µm
		B	20 µm
		G	50µm
E	Marchiato / Marked	I	ID
FF	Accessori/Accessories	00	Nessun accessorio

CODE COMPOSITION EXAMPLE

415# N0 02 D0 B I 00

415#: Filter-regulator MD

N0: Connections G 1/4

02: Metallic bowl, PS= 20 bar and manual drain

D0: Outlet pressure range 0,8 – 8 bar (11,6 – 116 psi)

B: Filtration 20 µm

I: Insert DEAL

00: No accessories

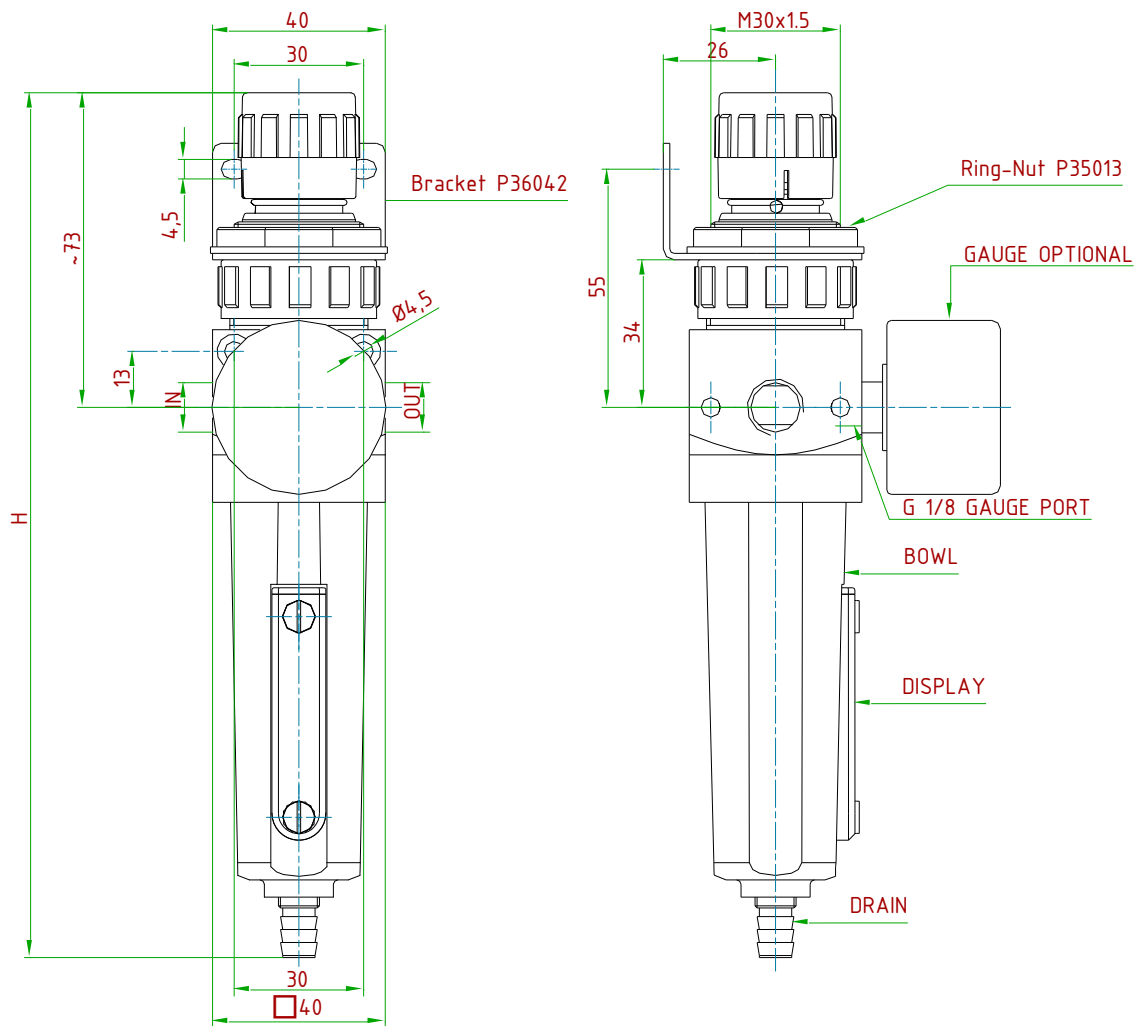
technical drawings (all dimensions in mm)

Bracket and Ring.Nut to be ordered separately

Order number bracket: M14201

Order number Ring-Nut: P35013110304

Pout [bar]	GAUGE-ORDER NUMBER	GAUGE RANGE [bar]
0.2÷1.5	0ABMAA19	0÷2.5
0.3÷3	0ABMAA20	0÷6
0.5÷5	0ABMAA21	0÷12
0.8÷8	0ABMAA22	0÷16
1.5÷15	0ABMAA23	0÷25



TYPE	IN/OUT
FR14 MD 1/4"GF	G 1/4"-F
FR18 MD 1/8"GF	G 1/8"-F
FR14 MD 1/4"NPTF	1/4"NPT-F
FR18 MD 1/8"NPTF	1/8"NPT-F

GAS FILTRATION	
CARTRIDGE	MATERIAL
5 µm	PE
20 µm	PE
50 µm	BRONZE

PS [bar]	BOWL CAPACITY	BOWL	DRAIN	NOTE	H
12	45 cc	TRANSPARENT	SEMI-AUTOMATIC	-	~195
12	45 cc	TRANSPARENT	MANUAL	-	~191
12	30 cc	TRANSPARENT	PUSH VALVE	-	~165
12	30 cc	TRANSPARENT	SEMI-AUTOMATIC	-	~168
12	30 cc	TRANSPARENT	MANUAL	-	~163
16	45 cc	ZINC ALLOY	SEMI-AUTOMATIC	-	~201
20	45 cc	ZINC ALLOY	MANUAL	-	~196
30	45 cc	ZINC ALLOY	MANUAL	NO DISPLAY	~196
30	45 cc	ZINC ALLOY	NO DRAIN	NO DISPLAY	~187

ID Insert Deal Srl

Strada dei Boschi, 40
20852 Villasanta (MB) Italia
tel. +39 039 30 2035
info@idinsertdeal.com
www.idinsertdeal.com

ID Insert Deal si riserva il diritto di cambiare le specifiche del prodotto senza preavviso.
ID Insert Deal reserves the right to change and/or modify product specifications without prior notice.

Insert Deal non si assume alcuna responsabilità per la scelta, uso e manutenzione di qualsiasi prodotto. La responsabilità per l'ideale scelta, uso e manutenzione di qualsiasi prodotto ID rimane interamente a carico dell'acquirente.

Insert Deal does not assume responsibility for selection, use and maintenance of any products. Responsibility for proper selection, use and maintenance of any ID products remains entirely to the purchaser.

Riproduzione vietata. Tutti i diritti riservati; nessuna parte del presente documento può essere riprodotta senza autorizzazione di ID Insert Deal Srl.
Reproduction forbidden. All rights reserved; the hereby document can't be reproduced, also partially, without the authorization of ID Insert Deal Srl.

FILTER REGULATOR_415(FR14MD-FR18MD)_EN_03



Azienda con sistema di gestione qualità certificato.
certificato N° 50 100 9191
Company with certificated quality management system.
certificate N° 50 100 9191