

**ELTEK**  
GROUP

**ICH BV**  
exclusive distributor

**NEW**

ANTI  
LIME  
SCALE  
VERSION



**THE CLEVER SOLUTION TO FLOOD PREVENTION.**

The Water Block valve is an overflow safety device that controls the maximum consumption of water, simply measuring the water volume passing through it. When consumption goes beyond a preset limit, the Water Block activates an internal valve to restrict water flow and to prevent flooding, keeping the surrounding area safe and clean.

**WATER  
BLOCK**

NEW

## REVOLUTIONARY TECHNOLOGY



### WATERBLOCK ANTI-LIMESCALE

STANDARD TYPE: 700  
ANTI-LIMESCALE: 7000

3/4" - threaded female connection in the inlet

3/4" - threaded male connection in the outlet

Vertical assembly preferred.

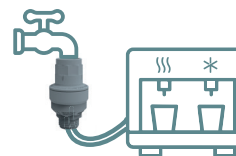
Maximum volume value adjustable through by 10 setting notches.

Every notch increases the set volume of 5 +/- 1 l

Food grade: **WRAS** A PROVED PRODUCT **NSF**

Safe for all drinking-water appliances.

To reset the water block after an overflow detection, it is possible to use the optional reset device p/n 700000002



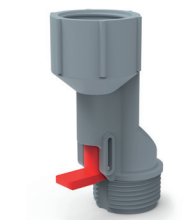
### TECHNICAL DATA:

Ambient temperature	2 °C ÷ 60 °C
Fluid temperature	2 °C ÷ 70 °C
Operating pressure	0.2 ÷ 10 bar
Flow rate	From 2 to 30 l/min
Resistance to bursting	> 50 bar at 25°C
Rated life-span	> 300.000 litre



### LIMESCALE INHIBITOR

The Water Block with an integrated "limescale inhibitor" is able to protect the water system against limescale build-up while detecting the regular flow of water. Thanks to its powerful magnets, the Water Block will turn limescale molecules into non-aggregated powder to be expelled, giving protection to the heating element and water within the appliance infrastructure.



### RESET DEVICE

This simple mechanical device allows the user to reset the Water Block after a flood prevention activation without the need to disassemble the water hose. The plunger activation will restart the normal functions of the connected water block.