

Valves G 1/8" - G 1" Series 200

Tappet
Lever roller
Lever button
Lever sensitive
Lever panel
Lever front
Push button
Switch
Lever lateral
Pedal
Pedal

| | | | | | | | |
|------------------------------------|--|--|-----------------------|------------|--|----------------------------|-------------------|
| 3/2 | Tappet spring | | | | 5/2 | | |
| | Ordering code | | | | | | |
| | 228.32.0.1 | 228.52.0.1 | | | | | |
| | | | | | | | |
| | Weight gr. 85 | Weight gr. 105 | | | | | |
| Operating force 33 N | | | | | | | |
| 3/2 | Tappet panel spring | | | | 5/2 | | |
| | Ordering code | | | | | | |
| | 228.32.1.1 | 228.52.1.1 | | | | | |
| | | | | | | | |
| | Weight gr. 102 | Weight gr. 122 | | | | | |
| Operating force 33 N | | | | | | | |
| 3/2 | Lever roller spring | | | | 5/2 | | |
| | Ordering code | | | | | | |
| | 228.32.2.1 <i>Plastic roller</i> | 228.52.2.1 <i>Plastic roller</i> | | | | | |
| | 228.32.2.1/2 <i>Metal roller</i> | 228.52.2.1/2 <i>Metal roller</i> | | | | | |
| | Weight gr. 115 | Weight gr. 135 | | | | | |
| Operating force 15 N | | | | | | | |
| 3/2 | Lever roller ball bearings spring | | | | 5/2 | | |
| | Ordering code | | | | | | |
| | 228.32.2.1/1 | 228.52.2.1/1 | | | | | |
| | | | | | | | |
| | Weight gr. 130 | Weight gr. 150 | | | | | |
| Operating force 15 N | | | | | | | |
| Operational characteristics | Fluid | Max working pressure | Operating temperature | | Flow rate at 6 bar with $\Delta p = 1$ | \varnothing Orifice size | Working port size |
| | Filtered and lubricated air | 10 bar | min. -5°C | max. +70°C | 540 NI/min | mm 6 | G 1/8" |

3/2 **5/2**

Lever button spring

Ordering code

| | |
|-------------------------------------|-------------------------------------|
| 228.32.2.6/1 <i>Red</i> | 228.52.2.6/1 <i>Red</i> |
| 228.32.2.6/2 <i>Black</i> | 228.52.2.6/2 <i>Black</i> |
| 228.32.2.6/3 <i>Green</i> | 228.52.2.6/3 <i>Green</i> |

Weight gr.120 Weight gr. 140

Operating force 15 N

3/2 **5/2**

Switch lateral 2-positions

Ordering code

| | |
|------------------|------------------|
| 228.32.27 | 228.52.27 |
|------------------|------------------|

Weight gr. 190 Weight gr. 210

3/2 **5/2**

Lever roller unidirectional spring

Ordering code

| | |
|--|--|
| 228.32.3.1 <i>Plastic roller</i> | 228.52.3.1 <i>Plastic roller</i> |
| 228.32.3.1/2 <i>Metal roller</i> | 228.52.3.1/2 <i>Metal roller</i> |

Weight gr. 110 Weight gr. 130

Operating force 15 N

3/2 **5/2**

Lever roller lateral bidirectional spring

Ordering code

| | |
|-------------------|-------------------|
| 228.32.4.1 | 228.52.4.1 |
|-------------------|-------------------|

Weight gr. 180 Weight gr. 200

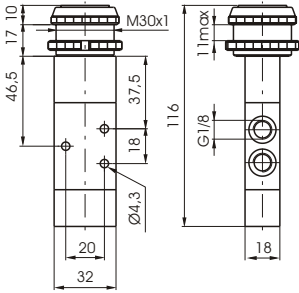
| Operational characteristics | Fluid | Max working pressure | Operating temperature | | Flow rate at 6 bar with $\Delta p = 1$ | \varnothing Orefice size | Working port size |
|-----------------------------|-----------------------------|----------------------|-----------------------|------------|--|----------------------------|-------------------|
| | Filtered and lubricated air | 10 bar | min. -5°C | max. +70°C | 540 Nl/min | mm 6 | G 1/8" |

| | | | | | | | | | | | | |
|-------------------------------------|-------------------------------------|---|-----------------------------------|-----------------------------------|--|-------------------------------------|-------------------------------------|-------------------------------------|--|--|--|--|
| 3/2 | Lever sensitive differential | | | | | 5/2 | | | | | | |
| | | <p style="text-align: center;">Ordering code</p> <table border="1" style="width: 100%;"> <tr> <td style="width: 50%; text-align: center;">228.32.4.13</td> <td style="width: 50%; text-align: center;">228.52.4.13</td> </tr> <tr> <td style="text-align: center;"> </td> <td style="text-align: center;"> </td> </tr> </table> | 228.32.4.13 | 228.52.4.13 | | | | | | | | |
| 228.32.4.13 | 228.52.4.13 | | | | | | | | | | | |
| | | | | | | | | | | | | |
| | | <p>Weight gr. 200 Weight gr. 220 Minimum working pressure 2,5 bar</p> | | | | | | | | | | |
| 3/2 | Lever panel Ø 30 2-positions | | | | | 5/2 | | | | | | |
| | | <p style="text-align: center;">Ordering code</p> <table border="1" style="width: 100%;"> <tr> <td style="width: 50%; text-align: center;">228.32.5/1 <i>Red</i></td> <td style="width: 50%; text-align: center;">228.52.5/1 <i>Red</i></td> </tr> <tr> <td style="width: 50%; text-align: center;">228.32.5/2 <i>Black</i></td> <td style="width: 50%; text-align: center;">228.52.5/2 <i>Black</i></td> </tr> <tr> <td style="width: 50%; text-align: center;">228.32.5/3 <i>Green</i></td> <td style="width: 50%; text-align: center;">228.52.5/3 <i>Green</i></td> </tr> <tr> <td style="text-align: center;"> </td> <td style="text-align: center;"> </td> </tr> </table> | 228.32.5/1 <i>Red</i> | 228.52.5/1 <i>Red</i> | 228.32.5/2 <i>Black</i> | 228.52.5/2 <i>Black</i> | 228.32.5/3 <i>Green</i> | 228.52.5/3 <i>Green</i> | | | | |
| 228.32.5/1 <i>Red</i> | 228.52.5/1 <i>Red</i> | | | | | | | | | | | |
| 228.32.5/2 <i>Black</i> | 228.52.5/2 <i>Black</i> | | | | | | | | | | | |
| 228.32.5/3 <i>Green</i> | 228.52.5/3 <i>Green</i> | | | | | | | | | | | |
| | | | | | | | | | | | | |
| | | <p>Weight gr. 198 Weight gr. 218</p> | | | | | | | | | | |
| 3/2 | Lever front 2-positions | | | | | 5/2 | | | | | | |
| | | <p style="text-align: center;">Ordering code</p> <table border="1" style="width: 100%;"> <tr> <td style="width: 50%; text-align: center;">228.32.55/1 <i>Red</i></td> <td style="width: 50%; text-align: center;">228.52.55/1 <i>Red</i></td> </tr> <tr> <td style="width: 50%; text-align: center;">228.32.55/2 <i>Black</i></td> <td style="width: 50%; text-align: center;">228.52.55/2 <i>Black</i></td> </tr> <tr> <td style="width: 50%; text-align: center;">228.32.55/3 <i>Green</i></td> <td style="width: 50%; text-align: center;">228.52.55/3 <i>Green</i></td> </tr> <tr> <td style="text-align: center;"> </td> <td style="text-align: center;"> </td> </tr> </table> | 228.32.55/1 <i>Red</i> | 228.52.55/1 <i>Red</i> | 228.32.55/2 <i>Black</i> | 228.52.55/2 <i>Black</i> | 228.32.55/3 <i>Green</i> | 228.52.55/3 <i>Green</i> | | | | |
| 228.32.55/1 <i>Red</i> | 228.52.55/1 <i>Red</i> | | | | | | | | | | | |
| 228.32.55/2 <i>Black</i> | 228.52.55/2 <i>Black</i> | | | | | | | | | | | |
| 228.32.55/3 <i>Green</i> | 228.52.55/3 <i>Green</i> | | | | | | | | | | | |
| | | | | | | | | | | | | |
| | | <p>Weight gr. 115 Weight gr. 135</p> | | | | | | | | | | |
| 3/2 | Pushbutton Ø 30 spring | | | | | 5/2 | | | | | | |
| | | <p style="text-align: center;">Ordering code</p> <table border="1" style="width: 100%;"> <tr> <td style="width: 50%; text-align: center;">228.32.6.1/1 <i>Red</i></td> <td style="width: 50%; text-align: center;">228.52.6.1/1 <i>Red</i></td> </tr> <tr> <td style="width: 50%; text-align: center;">228.32.6.1/2 <i>Black</i></td> <td style="width: 50%; text-align: center;">228.52.6.1/2 <i>Black</i></td> </tr> <tr> <td style="width: 50%; text-align: center;">228.32.6.1/3 <i>Green</i></td> <td style="width: 50%; text-align: center;">228.52.6.1/3 <i>Green</i></td> </tr> <tr> <td style="text-align: center;"> </td> <td style="text-align: center;"> </td> </tr> </table> | 228.32.6.1/1 <i>Red</i> | 228.52.6.1/1 <i>Red</i> | 228.32.6.1/2 <i>Black</i> | 228.52.6.1/2 <i>Black</i> | 228.32.6.1/3 <i>Green</i> | 228.52.6.1/3 <i>Green</i> | | | | |
| 228.32.6.1/1 <i>Red</i> | 228.52.6.1/1 <i>Red</i> | | | | | | | | | | | |
| 228.32.6.1/2 <i>Black</i> | 228.52.6.1/2 <i>Black</i> | | | | | | | | | | | |
| 228.32.6.1/3 <i>Green</i> | 228.52.6.1/3 <i>Green</i> | | | | | | | | | | | |
| | | | | | | | | | | | | |
| | | <p>Weight gr. 155 Weight gr. 175</p> | | | | | | | | | | |
| | | Operating force 33 N | | | | | | | | | | |
| Operational characteristics | Fluid | Max working pressure | Operating temperature | | Flow rate at 6 bar with $\Delta p = 1$ | \varnothing Orifice size | Working port size | | | | | |
| | Filtered and lubricated air | 10 bar | min. -5°C | max. +70°C | 540 NI/min | mm 6 | G 1/8" | | | | | |

3/2

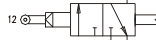
Sensitive pushbutton Ø 30 differential

5/2



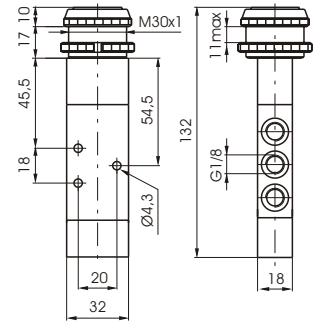
- 228.32.6.13/1
Red
- 228.32.6.13/2
Black
- 228.32.6.13/3
Green

- 228.52.6.13/1
Red
- 228.52.6.13/2
Black
- 228.52.6.13/3
Green



Weight gr. 197
Operating force 18,5 N (at 6 bar)

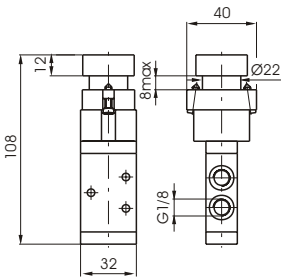
Weight gr. 217



3/2

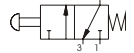
Push button spring

5/2



- 228.32.6.22/1
Red
- 228.32.6.22/2
Black
- 228.32.6.22/3
Green
- 228.32.6.22/4
Yellow

- 228.52.6.22/1
Red
- 228.52.6.22/2
Black
- 228.52.6.22/3
Green
- 228.52.6.22/4
Yellow

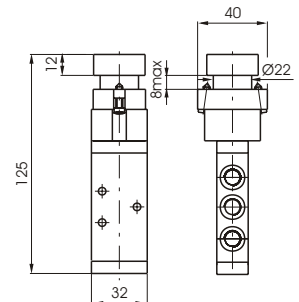


Weight gr. 225

Weight gr. 245

Operating force 33 N

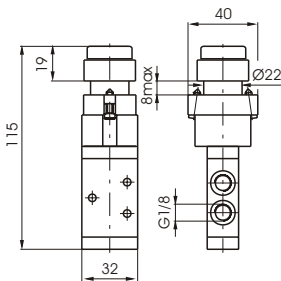
Operating force 33 N



3/2

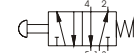
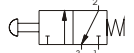
Raised pushbutton spring

5/2



- 228.32.6.23/1
Red
- 228.32.6.23/2
Black
- 228.32.6.23/3
Green
- 228.32.6.23/4
Yellow

- 228.52.6.23/1
Red
- 228.52.6.23/2
Black
- 228.52.6.23/3
Green
- 228.52.6.23/4
Yellow

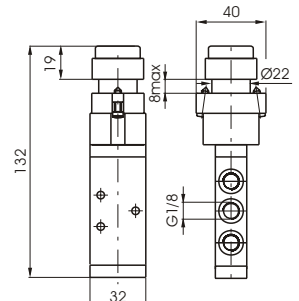


Weight gr. 230

Weight gr. 250

Operating force 33 N

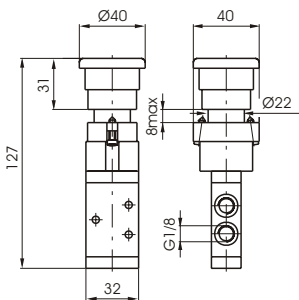
Operating force 33 N



3/2

Palm button 2-positions

5/2



- 228.32.6.25

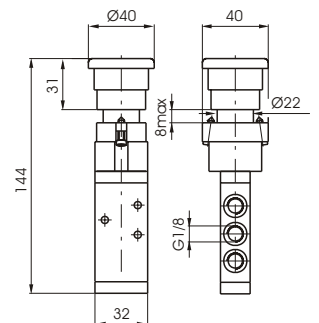
- 228.52.6.25



Weight gr. 235

Weight gr. 255

Operating force 33 N



Operational characteristics

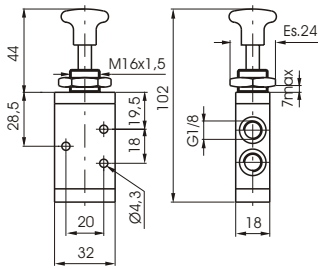
| Operational characteristics | Fluid | Max working pressure | Operating temperature | | Flow rate at 6 bar with $\Delta p = 1$ | \varnothing Orefice size | Working port size |
|-----------------------------|-----------------------------|----------------------|-----------------------|------------|--|----------------------------|-------------------|
| | Filtered and lubricated air | 10 bar | min. -5°C | max. +70°C | 540 Nl/min | mm 6 | G 1/8" |

| | | | | | | | | | | | | | | |
|-------------------------------------|---|---|-----------------------------------|-----------------------------------|--|-------------------------------------|-------------------------------------|-------------------------------------|--|--|----------------|----------------|--|--|
| 3/2 | Switch 2-positions | | | | 5/2 | | | | | | | | | |
| | | <p style="text-align: center;">Ordering code</p> <table border="1"> <tr> <td data-bbox="660 331 804 360">228.32.6.27</td> <td data-bbox="831 331 975 360">228.52.6.27</td> </tr> <tr> <td data-bbox="660 383 804 450"> </td> <td data-bbox="831 383 975 450"> </td> </tr> <tr> <td data-bbox="639 568 783 598">Weight gr. 230</td> <td data-bbox="831 568 975 598">Weight gr. 250</td> </tr> </table> | 228.32.6.27 | 228.52.6.27 | | | Weight gr. 230 | Weight gr. 250 | | | | | | |
| 228.32.6.27 | 228.52.6.27 | | | | | | | | | | | | | |
| | | | | | | | | | | | | | | |
| Weight gr. 230 | Weight gr. 250 | | | | | | | | | | | | | |
| 3/2 | Key switch 2-positions | | | | 5/2 | | | | | | | | | |
| | | <p style="text-align: center;">Ordering code</p> <table border="1"> <tr> <td data-bbox="660 790 804 819">228.32.6.28</td> <td data-bbox="831 790 975 819">228.52.6.28</td> </tr> <tr> <td data-bbox="660 842 804 909"> </td> <td data-bbox="831 842 975 909"> </td> </tr> <tr> <td data-bbox="639 1028 783 1057">Weight gr. 230</td> <td data-bbox="831 1028 975 1057">Weight gr. 250</td> </tr> </table> | 228.32.6.28 | 228.52.6.28 | | | Weight gr. 230 | Weight gr. 250 | | | | | | |
| 228.32.6.28 | 228.52.6.28 | | | | | | | | | | | | | |
| | | | | | | | | | | | | | | |
| Weight gr. 230 | Weight gr. 250 | | | | | | | | | | | | | |
| 3/2 | Palm push button Ø 30 spring | | | | 5/2 | | | | | | | | | |
| | | <p style="text-align: center;">Ordering code</p> <table border="1"> <tr> <td data-bbox="660 1261 804 1290">228.32.7.1/1 <i>Red</i></td> <td data-bbox="831 1261 975 1290">228.52.7.1/1 <i>Red</i></td> </tr> <tr> <td data-bbox="660 1312 804 1341">228.32.7.1/2 <i>Black</i></td> <td data-bbox="831 1312 975 1341">228.52.7.1/2 <i>Black</i></td> </tr> <tr> <td data-bbox="660 1364 804 1393">228.32.7.1/3 <i>Green</i></td> <td data-bbox="831 1364 975 1393">228.52.7.1/3 <i>Green</i></td> </tr> <tr> <td data-bbox="660 1415 804 1482"> </td> <td data-bbox="831 1415 975 1482"> </td> </tr> <tr> <td data-bbox="639 1491 783 1520">Weight gr. 148</td> <td data-bbox="831 1491 975 1520">Weight gr. 168</td> </tr> </table> <p style="text-align: center;">Operating force 33 N</p> | 228.32.7.1/1 <i>Red</i> | 228.52.7.1/1 <i>Red</i> | 228.32.7.1/2 <i>Black</i> | 228.52.7.1/2 <i>Black</i> | 228.32.7.1/3 <i>Green</i> | 228.52.7.1/3 <i>Green</i> | | | Weight gr. 148 | Weight gr. 168 | | |
| 228.32.7.1/1 <i>Red</i> | 228.52.7.1/1 <i>Red</i> | | | | | | | | | | | | | |
| 228.32.7.1/2 <i>Black</i> | 228.52.7.1/2 <i>Black</i> | | | | | | | | | | | | | |
| 228.32.7.1/3 <i>Green</i> | 228.52.7.1/3 <i>Green</i> | | | | | | | | | | | | | |
| | | | | | | | | | | | | | | |
| Weight gr. 148 | Weight gr. 168 | | | | | | | | | | | | | |
| 3/2 | Push button spring | | | | 5/2 | | | | | | | | | |
| | | <p style="text-align: center;">Ordering code</p> <table border="1"> <tr> <td data-bbox="660 1709 804 1738">228.32.8.1/1 <i>Red</i></td> <td data-bbox="831 1709 975 1738">228.52.8.1/1 <i>Red</i></td> </tr> <tr> <td data-bbox="660 1760 804 1789">228.32.8.1/2 <i>Black</i></td> <td data-bbox="831 1760 975 1789">228.52.8.1/2 <i>Black</i></td> </tr> <tr> <td data-bbox="660 1812 804 1841">228.32.8.1/3 <i>Green</i></td> <td data-bbox="831 1812 975 1841">228.52.8.1/3 <i>Green</i></td> </tr> <tr> <td data-bbox="660 1863 804 1930"> </td> <td data-bbox="831 1863 975 1930"> </td> </tr> <tr> <td data-bbox="639 1939 783 1968">Weight gr. 120</td> <td data-bbox="831 1939 975 1968">Weight gr. 140</td> </tr> </table> <p style="text-align: center;">Operating force 33 N</p> | 228.32.8.1/1 <i>Red</i> | 228.52.8.1/1 <i>Red</i> | 228.32.8.1/2 <i>Black</i> | 228.52.8.1/2 <i>Black</i> | 228.32.8.1/3 <i>Green</i> | 228.52.8.1/3 <i>Green</i> | | | Weight gr. 120 | Weight gr. 140 | | |
| 228.32.8.1/1 <i>Red</i> | 228.52.8.1/1 <i>Red</i> | | | | | | | | | | | | | |
| 228.32.8.1/2 <i>Black</i> | 228.52.8.1/2 <i>Black</i> | | | | | | | | | | | | | |
| 228.32.8.1/3 <i>Green</i> | 228.52.8.1/3 <i>Green</i> | | | | | | | | | | | | | |
| | | | | | | | | | | | | | | |
| Weight gr. 120 | Weight gr. 140 | | | | | | | | | | | | | |
| Operational characteristics | Fluid | Max working pressure | Operating temperature | | Flow rate at 6 bar with $\Delta p = 1$ | \varnothing Orifice size | Working port size | | | | | | | |
| | Filtered and lubricated air | 10 bar | min. -5°C | max. +70°C | 540 NI/min | mm 6 | G 1/8" | | | | | | | |

3/2

**Push button
2-positions**

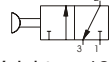
5/2



Ordering code

228.32.8/1
Red
228.32.8/2
Black
228.32.8/3
Green

228.52.8/1
Red
228.52.8/2
Black
228.52.8/3
Green

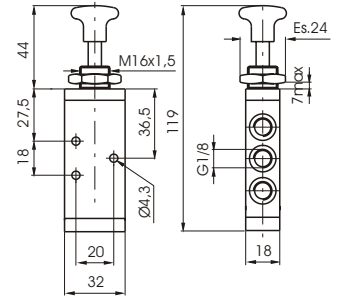


Weight gr. 120



Weight gr. 140

Operating force 10 N



**Lever lateral
spring**

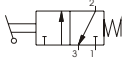
3/2

5/2

Ordering code

3/2
228.32.9.1/1
Red
228.32.9.1/2
Black
228.32.9.1/3
Green

5/2
228.52.9.1/1
Red
228.52.9.1/2
Black
228.52.9.1/3
Green



Weight gr. 140



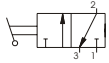
Weight gr. 160

**Lever lateral
2-positions**

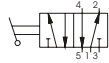
Ordering code

228.32.9/1
Red
228.32.9/2
Black
228.32.9/3
Green

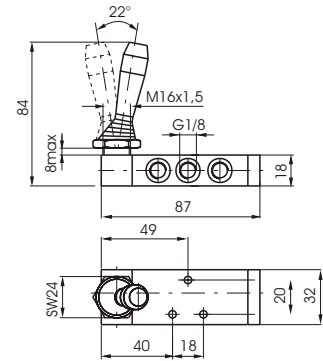
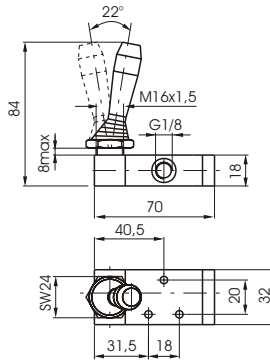
228.52.9/1
Red
228.52.9/2
Black
228.52.9/3
Green



Weight gr. 140



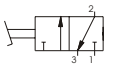
Weight gr. 160

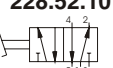


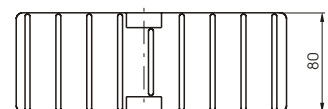
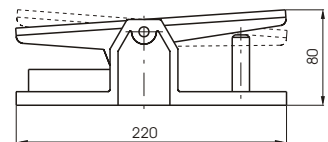
**Pedal aluminium
2-positions**

3/2 - 5/2

Ordering code

3/2
228.32.10

Weight gr. 790

5/2
228.52.10

Weight gr. 810



**Operational
characteristics**

Fluid

Filtered and
lubricated air

Max working
pressure

10 bar

Operating
temperature

min.
-5°C max.
+70°C

Flow rate at 6 bar
with $\Delta p = 1$

540 Nl/min

Ø Orefice
size

mm 6

Working port
size

G 1/8"

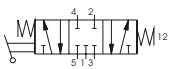
| | | | | | | |
|---|--|---|--|--|-----------------------------------|--|
| <p>Pedal aluminium spring 3/2 - 5/2</p> <hr/> <p>Ordering code</p> | | | | | | |
| 3/2 | <p>228.32.10.1</p> <p>Weight gr. 790</p> | | | | | |
| 5/2 | <p>228.52.10.1</p> <p>Weight gr. 810</p> | | | | | |
| <p>Pedal protected spring 3/2 - 5/2</p> <hr/> <p>Ordering code</p> | | | | | | |
| 3/2 | <p>228.32.10.1/1 228.32.10.2/1 without safety device</p> | | | | | |
| 5/2 | <p>228.52.10.1/1 228.52.10.2/1 without safety device</p> <p>Weight gr. 1.120</p> | | | | | |
| <p>Pedal protected 2-positions 3/2 - 5/2</p> <hr/> <p>Ordering code</p> | | | | | | |
| 3/2 | <p>228.32.10/1</p> | | | | | |
| 5/2 | <p>228.52.10/1</p> <p>Weight gr. 1.120</p> | | | | | |
| <p>Pedal plastic miniaturized spring 5/2</p> <hr/> <p>Ordering code</p> | | | | | | |
| | <p>228.52.10.1P 228.52.10.1PX (Stainless steel spool)</p> <p>Weight gr. 230</p> | | | | | |
| <p>Operational characteristics</p> | | | | | | |
| | <p>Fluid</p> <p>Filtered and lubricated air</p> | <p>Max working pressure</p> <p>10 bar</p> | <p>Operating temperature</p> <p>min. -5°C max. +70°C</p> | <p>Flow rate at 6 bar with $\Delta p = 1$</p> <p>540 NI/min</p> | <p>Ø Orefice size</p> <p>mm 6</p> | <p>Working port size</p> <p>G 1/8"</p> |

**Lever lateral
spring centre - 3-positions**

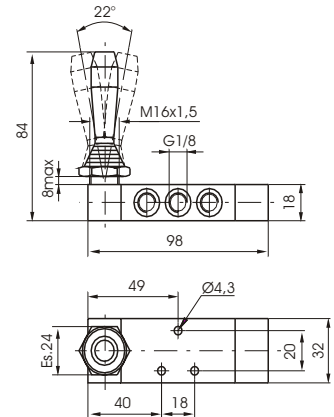
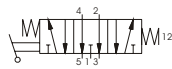
5/3

Ordering code

Closed centres
228.53.31.9.1/1 Red
228.53.31.9.1/2 Black
228.53.31.9.1/3 Green



Open centres
228.53.32.9.1/1 Red
228.53.32.9.1/2 Black
228.53.32.9.1/3 Green



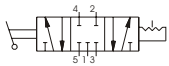
Weight gr. 190

**Lever lateral
3-position detent**

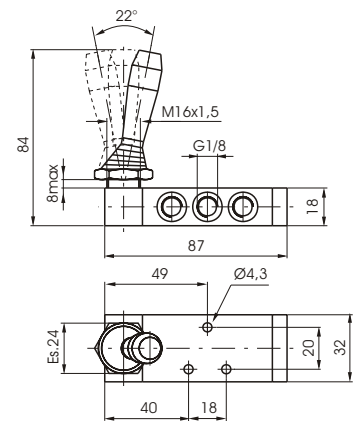
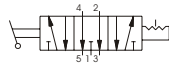
5/3

Ordering code

Closed centres
228.53.31.9/1 Red
228.53.31.9/2 Black
228.53.31.9/3 Green



Open centres
228.53.32.9/1 Red
228.53.32.9/2 Black
228.53.32.9/3 Green



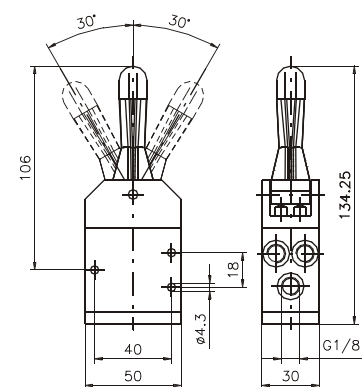
Weight gr. 160

**Lever central
Technopolymer**

5/3

Ordering code

*Open centres
spring - 3-positions*
228.53.32.99/1 Red
228.53.32.99/2 Black



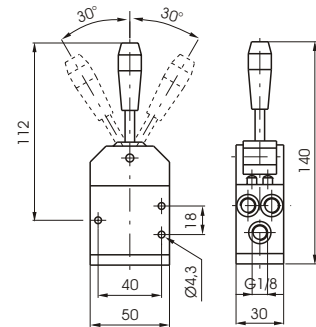
Weight gr. 140

| Operational characteristics | Fluid | Max working pressure | Operating temperature | | Flow rate at 6 bar with $\Delta p = 1$ | Ø Orefice size | Working port size |
|-----------------------------|-----------------------------|----------------------|-----------------------|------------|--|----------------|-------------------|
| | Filtered and lubricated air | 10 bar | min. -5°C | max. +70°C | 410 Nl/min | mm 6 | G 1/8" |

**Lever central
Metal**

5/3

Ordering code



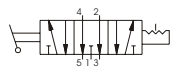
Open centres
2-positions

228.53.32.99.2/1 Red
228.53.32.99.2/2 Black



Open centres
3-positions

228.53.32.99.3/1 Red
228.53.32.99.3/2 Black



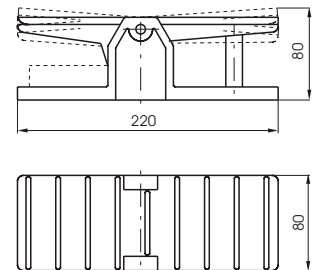
Weight gr. 140

| Operational characteristics | Fluid | Max working pressure | Operating temperature | | Flow rate at 6 bar with $\Delta p = 1$ | \varnothing Orefice size | Working port size |
|-----------------------------|-----------------------------|----------------------|-----------------------|------------|--|----------------------------|-------------------|
| | Filtered and lubricated air | 10 bar | min. -5°C | max. +70°C | 410 NI/min | mm 6 | G 1/8" |

**Pedal spring
3-positions**

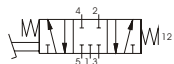
5/3

Ordering code



Closed centres

228.53.31.10.1



Open centres

228.53.32.10.1



Weight gr. 810

| Operational characteristics | Fluid | Max working pressure | Operating temperature | | Flow rate at 6 bar with $\Delta p = 1$ | \varnothing Orefice size | Working port size |
|-----------------------------|-----------------------------|----------------------|-----------------------|------------|--|----------------------------|-------------------|
| | Filtered and lubricated air | 10 bar | min. -5°C | max. +70°C | 410 NI/min | mm 6 | G 1/8" |

3/2 **5/2**

Tappet spring

Ordering code

| | |
|-------------------|-------------------|
| 224.32.1.1 | 224.52.1.1 |
|-------------------|-------------------|

Weight gr. 370 Weight gr. 455
Operating force 71,5 N

3/2 **5/2**

Lever roller spring

Ordering code

| | |
|-------------------|-------------------|
| 224.32.2.1 | 224.52.2.1 |
|-------------------|-------------------|

Weight gr. 510 Weight gr. 595
Operating force 35 N

3/2 **5/2**

Lever roller, unidirectional spring

Ordering code

| | |
|-------------------|-------------------|
| 224.32.3.1 | 224.52.3.1 |
|-------------------|-------------------|

Weight gr. 525 Weight gr. 610
Operating force 35 N

3/2 **5/2**

Pushbutton spring

Ordering code

| | |
|-------------------|-------------------|
| 224.32.8.1 | 224.52.8.1 |
|-------------------|-------------------|

Weight gr. 395 Weight gr. 480
Operating force 71,5 N

| Operational characteristics | Fluid | Max working pressure | Operating temperature | | Flow rate at 6 bar with $\Delta p = 1$ | \varnothing Orefice size | Working port size |
|-----------------------------|-----------------------------|----------------------|-----------------------|------------|--|----------------------------|-------------------|
| | Filtered and lubricated air | 10 bar | min. -5°C | max. +70°C | 1360 NI/min | mm 8 | G 1/4" |

3/2 **Pushbutton** **5/2**
2-positions

Ordering code

| | |
|-----------------|-----------------|
| 224.32.8 | 224.52.8 |
|-----------------|-----------------|

Weight gr. 385 Weight gr. 470
Operating force 10 N

Lever lateral spring **3/2** **5/2**

Ordering code

| | |
|---|---|
| <p>3/2</p> <p>224.32.9.1/1 <i>Red</i></p> <p>224.32.9.1/2 <i>Black</i></p> <p>224.32.9.1/3 <i>Green</i></p> <p>Weight gr. 520</p> | <p>5/2</p> <p>224.52.9.1/1 <i>Red</i></p> <p>224.52.9.1/2 <i>Black</i></p> <p>224.52.9.1/3 <i>Green</i></p> <p>Weight gr. 605</p> |
|---|---|

Lever lateral 2-positions

Ordering code

| | |
|---|---|
| <p>224.32.9/1 <i>Red</i></p> <p>224.32.9/2 <i>Black</i></p> <p>224.32.9/3 <i>Green</i></p> <p>Weight gr. 510</p> | <p>224.52.9/1 <i>Red</i></p> <p>224.52.9/2 <i>Black</i></p> <p>224.52.9/3 <i>Green</i></p> <p>Weight gr. 595</p> |
|---|---|

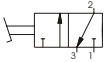

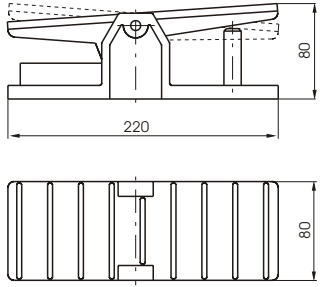

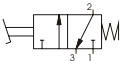

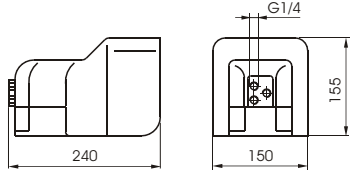
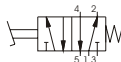
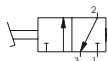

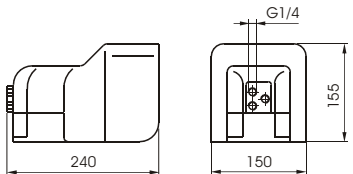

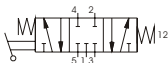


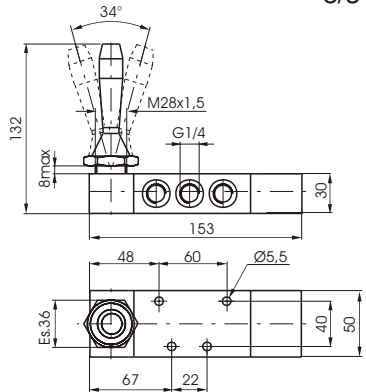
Pedal aluminium spring **3/2 - 5/2**

Ordering code

| | |
|---|---|
| <p>3/2</p> <p>224.32.10.1</p> <p>Weight gr. 1.070</p> | <p>5/2</p> <p>224.52.10.1</p> <p>Weight gr. 1.155</p> |
|---|---|

| Operational characteristics | Fluid | Max working pressure | Operating temperature | | Flow rate at 6 bar with $\Delta p = 1$ | Ø Orifice size | Working port size |
|-----------------------------|-------|-----------------------------|-----------------------|-----------|--|----------------|-------------------|
| | | Filtered and lubricated air | 10 bar | min. -5°C | max. +70°C | 1360 NI/min | mm 8 |



| | | | | | | | |
|--|---|--|----------------------|--|--|---|--|
| <p>Pedal aluminium 2-positions</p> | | 3/2 - 5/2 | | | | | |
| <p>Ordering code</p> | | | | | | | |
| 3/2 | <p>224.32.10</p>  <p>Weight gr. 1.060</p> |  | |  | | | |
| 5/2 | <p>224.52.10</p>  <p>Weight gr. 1.145</p> | | | | | | |
| <p>Pedal protected spring</p> | | 3/2 - 5/2 | | | | | |
| <p>Ordering code</p> | | | | | | | |
| 3/2 | <p>214.32.10.1/1 214.32.10.2/1 without safety device</p>  |  | |  | | | |
| 5/2 | <p>214.52.10.1/1 214.52.10.2/1 without safety device</p>  <p>Weight gr. 1.730</p> | | | | | | |
| <p>Pedal protected 2-positions</p> | | 3/2 - 5/2 | | | | | |
| <p>Ordering code</p> | | | | | | | |
| 3/2 | <p>214.32.10/1</p>  |  | |  | | | |
| 5/2 | <p>214.52.10/1</p>  <p>Weight gr. 1.730</p> | | | | | | |
| <p>Lever lateral spring - 3-positions</p> | | 5/3 | | | | | |
| <p>Ordering code</p> | | | | | | | |
| <p><i>Closed centres</i></p> <p>224.53.31.9.1/1 Red 224.53.31.9.1/2 Black 224.53.31.9.1/3 Green</p>  | | <p><i>Open centres</i></p> <p>224.53.32.9.1/1 Red 224.53.32.9.1/2 Black 224.53.32.9.1/3 Green</p>  | |  <p>Weight gr. 745</p> | |  | |
| <p>Operational characteristics</p> | | Fluid | Max working pressure | | | Operating temperature | Flow rate at 6 bar with $\Delta p = 1$ |
| | | Filtered and lubricated air | 10 bar | min. -5°C max. +70°C | 1360 NI/min (3/2-5/2) 1280 NI/min (5/3) | mm 8 | G 1/4" |

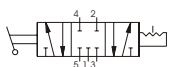
**Lever lateral
3-positions**

5/3

Ordering code

Closed centres

224.53.31.9/1 Red
224.53.31.9/2 Black
224.53.31.9/3 Green

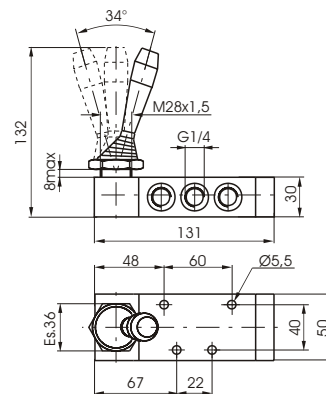


Open centres

224.53.32.9/1 Red
224.53.32.9/2 Black
224.53.32.9/3 Green



Weight gr. 605



Operational characteristics

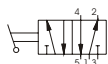
| Operational characteristics | Fluid | Max working pressure | Operating temperature | | Flow rate at 6 bar with $\Delta p = 1$ | \varnothing Orifice size | Working port size |
|-----------------------------|-----------------------------|----------------------|-----------------------|------------|--|----------------------------|-------------------|
| | Filtered and lubricated air | 10 bar | min. -5°C | max. +70°C | 1280 NI/min | mm 8 | G 1/4" |

**Lever lateral with
locking device
2 positions**

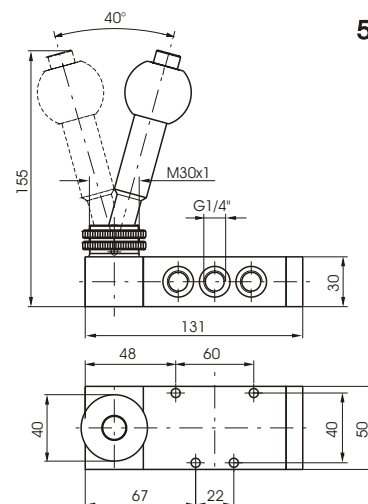
5/2

Ordering code

224.52.9.2



Weight gr. 825

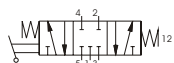


**Lever lateral with
locking device
spring - 3 positions**

5/3

Ordering code

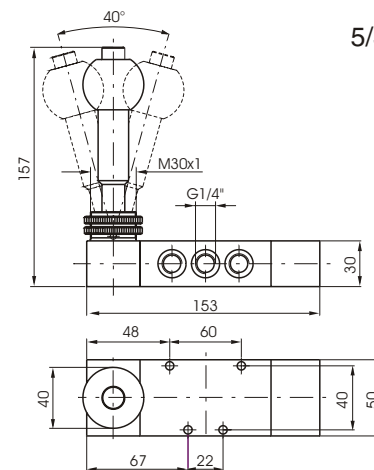
Closed centres
224.53.31.9.2



Open centres
224.53.32.9.2



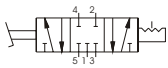
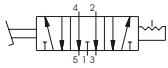

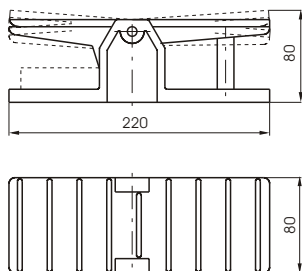
Weight gr. 965



Operational characteristics

| Operational characteristics | Fluid | Max working pressure | Operating temperature | | Flow rate at 6 bar with $\Delta p = 1$ | \varnothing Orifice size | Working port size |
|-----------------------------|-----------------------------|----------------------|-----------------------|------------|--|----------------------------|-------------------|
| | Filtered and lubricated air | 10 bar | min. -5°C | max. +70°C | 1020 NI/min | mm 7 | G 1/4" |

| | | |
|--|--|--|
| Pedal spring - 3-positions | | 5/3 |
| Ordering code | | |
| <p><i>Closed centres</i> 224.53.31.10.1</p>  | <p><i>Open centres</i> 224.53.32.10.1</p>  |  <p style="text-align: center;">Weight gr. 1.285</p>  |

| | | |
|--|--|---|
| Pedal 3-positions | | 5/3 |
| Ordering code | | |
| <p><i>Closed centres</i> 224.53.31.10</p>  | <p><i>Open centres</i> 224.53.32.10</p>  |  <p style="text-align: center;">Weight gr. 1.145</p>  |

| Operational characteristics | Fluid | Max working pressure | Operating temperature | | Flow rate at 6 bar with $\Delta p = 1$ | \varnothing Orifice size | Working port size |
|-----------------------------|-----------------------------|----------------------|-----------------------|------------|--|----------------------------|-------------------|
| | Filtered and lubricated air | 10 bar | min. -5°C | max. +70°C | 1280 NI/min | mm 8 | G 1/4" |



| | | | | | | | |
|------------------------------------|---|-----------------------|-------------------------|------------|--|----------------------------|-------------------|
| 3/2 | Tappet spring | | | | 5/2 | | |
| | Ordering code | | | | | | |
| | 214/2.32.0.1 | 214/2.52.0.1 | | | | | |
| | | | | | | | |
| | Weight gr. 145 | Weight gr. 185 | | | | | |
| | Operating force 51 N | | | | | | |
| 3/2 | Lever roller spring | | | | 5/2 | | |
| | Ordering code | | | | | | |
| | 214/2.32.2.1 | 214/2.52.2.1 | | | | | |
| | <i>Plastic roller</i> | <i>Plastic roller</i> | | | | | |
| | 214/2.32.2.1/2 | 214/2.52.2.1/2 | | | | | |
| | <i>Metal roller</i> | <i>Metal roller</i> | | | | | |
| | | | | | | | |
| | Weight gr. 170 | Weight gr. 210 | | | | | |
| | Operating force 24 N | | | | | | |
| 3/2 | Lever roller ball bearing spring | | | | 5/2 | | |
| | Ordering code | | | | | | |
| | 214/2.32.2.1/1 | 214/2.52.2.1/1 | | | | | |
| | Weight gr. 180 | Weight gr. 220 | | | | | |
| | Operating force 24 N | | | | | | |
| 3/2 | Lever button spring | | | | 5/2 | | |
| | Ordering code | | | | | | |
| | 214/2.32.2.6/1 | 214/2.52.2.6/1 | | | | | |
| | <i>Red</i> | <i>Red</i> | | | | | |
| | 214/2.32.2.6/2 | 214/2.52.2.6/2 | | | | | |
| | <i>Black</i> | <i>Black</i> | | | | | |
| | 214/2.32.2.6/3 | 214/2.52.2.6/3 | | | | | |
| | <i>Green</i> | <i>Green</i> | | | | | |
| | | | | | | | |
| | Weight gr. 170 | Weight gr. 210 | | | | | |
| | Operating force 24 N | | | | | | |
| Operational characteristics | Fluid | Max working pressure | Operating temperature | | Flow rate at 6 bar with $\Delta p = 1$ | \varnothing Orifice size | Working port size |
| | Filtered and lubricated air | 10 bar | min. -5°C max. +70°C | 970 NI/min | mm 7 | G 1/4" | |



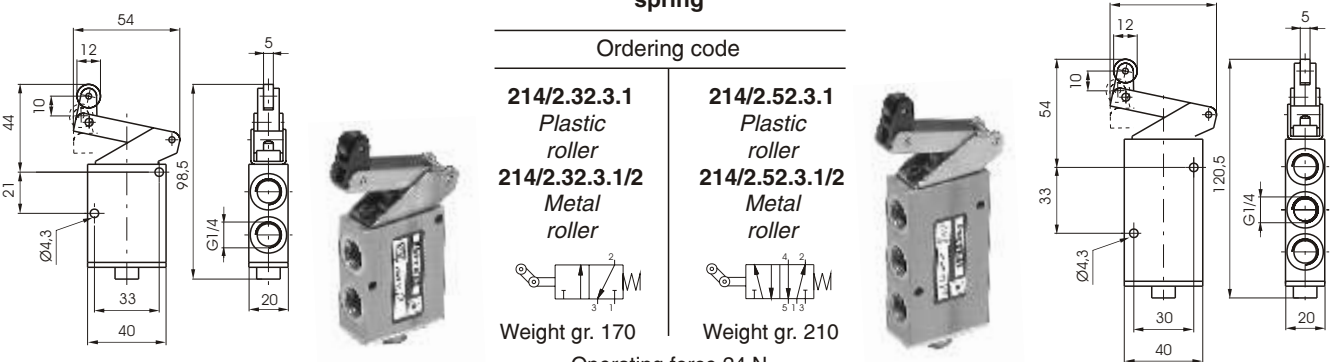
3/2 **5/2**

Lever roller unidirectional spring

Ordering code

| | |
|---|---|
| <p>214/2.32.3.1 <i>Plastic roller</i></p> <p>214/2.32.3.1/2 <i>Metal roller</i></p>  <p>Weight gr. 170</p> | <p>214/2.52.3.1 <i>Plastic roller</i></p> <p>214/2.52.3.1/2 <i>Metal roller</i></p>  <p>Weight gr. 210</p> |
|---|---|

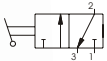
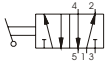
Operating force 24 N

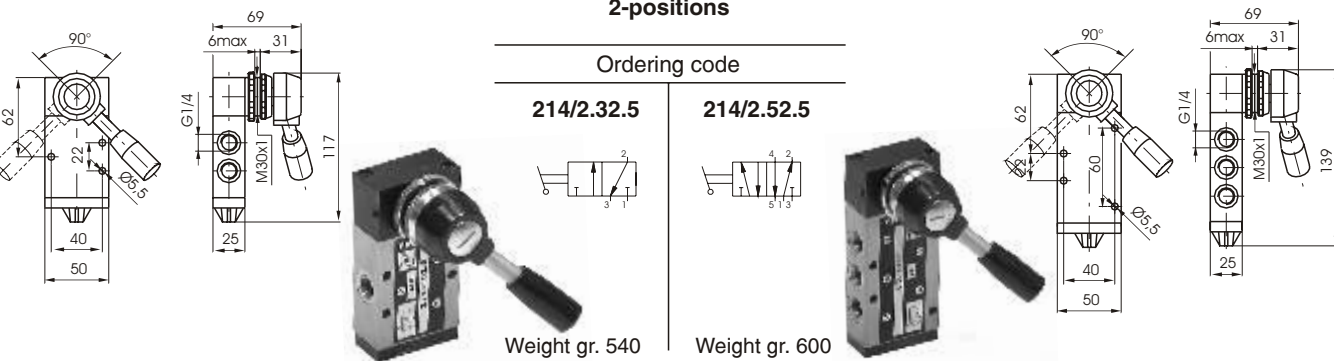


3/2 **5/2**

Lever rotating 2-positions

Ordering code

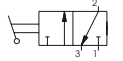

| | |
|--|--|
| <p>214/2.32.5</p>  <p>Weight gr. 540</p> | <p>214/2.52.5</p>  <p>Weight gr. 600</p> |
|--|--|

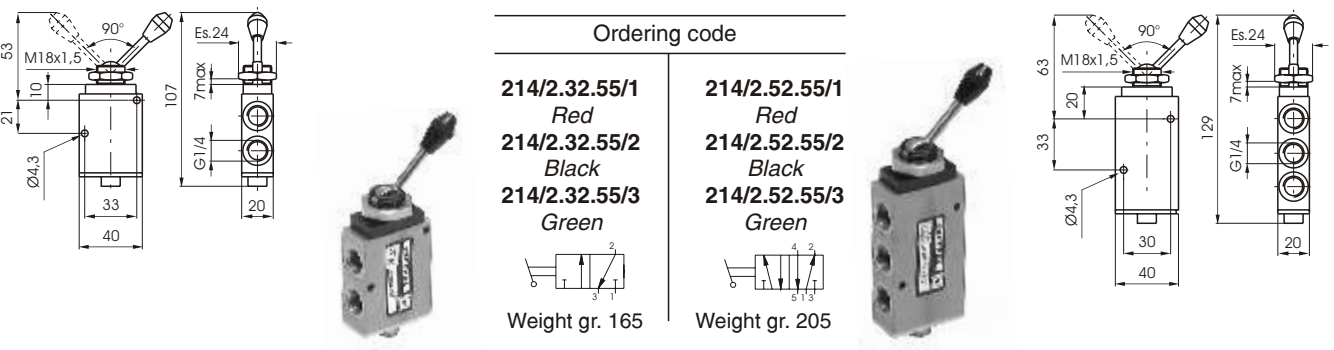


3/2 **5/2**

Lever front 2-positions

Ordering code



| | |
|--|--|
| <p>214/2.32.55/1 <i>Red</i></p> <p>214/2.32.55/2 <i>Black</i></p> <p>214/2.32.55/3 <i>Green</i></p>  <p>Weight gr. 165</p> | <p>214/2.52.55/1 <i>Red</i></p> <p>214/2.52.55/2 <i>Black</i></p> <p>214/2.52.55/3 <i>Green</i></p>  <p>Weight gr. 205</p> |
|--|--|



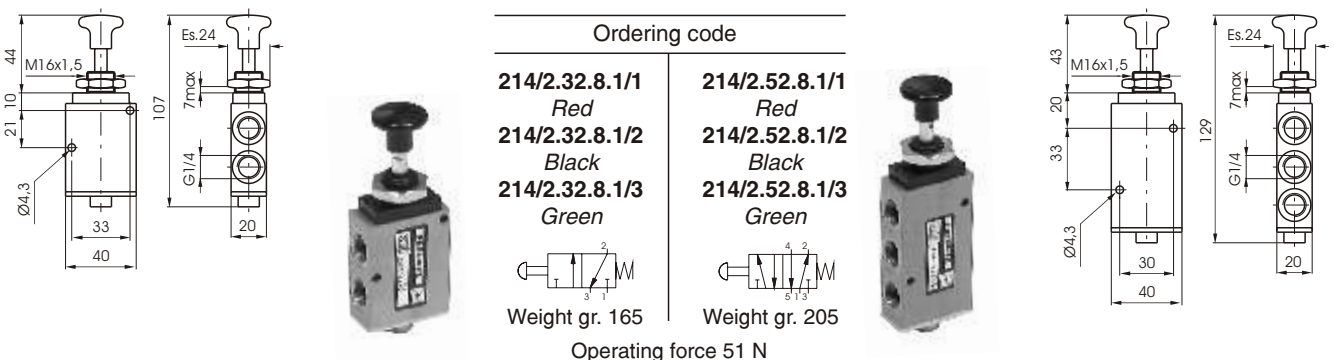
3/2 **5/2**

Pushbutton spring

Ordering code

| | |
|---|---|
| <p>214/2.32.8.1/1 <i>Red</i></p> <p>214/2.32.8.1/2 <i>Black</i></p> <p>214/2.32.8.1/3 <i>Green</i></p>  <p>Weight gr. 165</p> | <p>214/2.52.8.1/1 <i>Red</i></p> <p>214/2.52.8.1/2 <i>Black</i></p> <p>214/2.52.8.1/3 <i>Green</i></p>  <p>Weight gr. 205</p> |
|---|---|

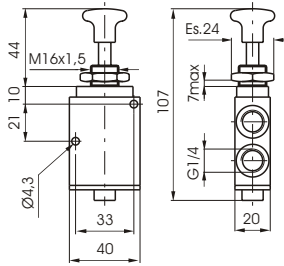
Operating force 51 N



| Operational characteristics | Fluid | Max working pressure | Operating temperature | | Flow rate at 6 bar with $\Delta p = 1$ | \varnothing Orefice size | Working port size |
|-----------------------------|-----------------------------|----------------------|-----------------------|------------|--|----------------------------|-------------------|
| | Filtered and lubricated air | 10 bar | min. -5°C | max. +70°C | 970 NI/min | mm 7 | G 1/4" |



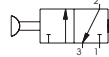
3/2



**Pushbutton
2-positions**

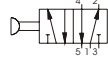
Ordering code

214/2.32.8/1
Red
214/2.32.8/2
Black
214/2.32.8/3
Green



Weight gr. 160

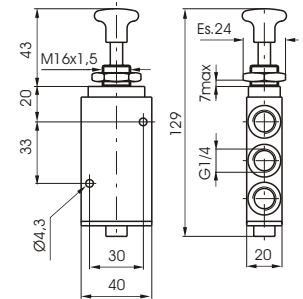
214/2.52.8/1
Red
214/2.52.8/2
Black
214/2.52.8/3
Green



Weight gr. 200

Operating force 10 N

5/2



| Operational characteristics | Fluid | Max working pressure | Operating temperature | | Flow rate at 6 bar with $\Delta p = 1$ | \varnothing Orefice size | Working port size |
|-----------------------------|-----------------------------|----------------------|-----------------------|------------|--|----------------------------|-------------------|
| | Filtered and lubricated air | 10 bar | min. -5°C | max. +70°C | 970 NI/min | mm 7 | G 1/4" |



| Lever lateral spring | | 3/2 | | 5/2 | | | |
|--|--------------------------------------|----------------------|-----------------------|------------|--|----------------|-------------------|
| Ordering code | | | | | | | |
| 3/2 212.32.9.1 | 5/2 212.52.9.1 | | | | | | |
| Weight gr. 1.480 | Weight gr. 1.765 | | | | | | |
| Lever lateral 2-positions | | | | | | | |
| Ordering code | | | | | | | |
| 3/2 212.32.9 | 5/2 212.52.9 | | | | | | |
| Weight gr. 1.460 | Weight gr. 1.745 | | | | | | |
| Operational characteristics | Fluid | Max working pressure | Operating temperature | | Flow rate at 6 bar with $\Delta p = 1$ | Ø Orefice size | Working port size |
| | Filtered and lubricated air | 10 bar | min. -5°C | max. +70°C | 3500 NI/min (3/2-5/2) | mm 15 | G 1/2" |
| Lever lateral spring - 3-positions | | | | 5/3 | | | |
| Ordering code | | | | | | | |
| Closed centres 212.53.31.9.1 | Open centres 212.53.32.9.1 | | | | | | |
| | | Weight gr. 2.100 | | | | | |
| Lever lateral 3-positions | | | | 5/3 | | | |
| Ordering code | | | | | | | |
| Closed centres 212.53.31.9 | Open centres 212.53.32.9 | | | | | | |
| | | Weight gr. 1.765 | | | | | |
| Operational characteristics | Fluid | Max working pressure | Operating temperature | | Flow rate at 6 bar with $\Delta p = 1$ | Ø Orefice size | Working port size |
| | Filtered and lubricated air | 10 bar | min. -5°C | max. +70°C | 3000 NI/min | mm 15 | G 1/2" |



| Lever lateral spring | | 3/2 | | 5/2 | | |
|---|---|-----------------------|------------|--|----------------------------|-------------------|
| Ordering code | | | | | | |
| 3/2 211.32.9.1 | 5/2 211.52.9.1 | | | | | |
| Weight gr. 4.300 | Weight gr. 4.900 | | | | | |
| Ordering code | | | | | | |
| 3/2 211.32.9 | 5/2 211.52.9 | | | | | |
| Weight gr. 4.300 | Weight gr. 4.900 | | | | | |
| Ordering code | | | | | | |
| Lever lateral spring - 3-positions | | | | | | |
| Ordering code | | | | | | |
| <i>Closed centres</i> 211.53.31.9.1 | <i>Open centres</i> 211.53.32.9.1 | | | | | |
| Weight gr. 5.000 | | | | | | |
| Ordering code | | | | | | |
| Lever lateral 3-positions | | | | | | |
| Ordering code | | | | | | |
| <i>Closed centres</i> 211.53.31.9 | <i>Open centres</i> 211.53.32.9 | | | | | |
| Weight gr. 5.000 | | | | | | |
| Operational characteristics | | | | | | |
| Fluid | Max working pressure | Operating temperature | | Flow rate at 6 bar with $\Delta p = 1$ | \varnothing Orifice size | Working port size |
| Filtered and lubricated air | 10 bar | min. -5°C | max. +70°C | 6500 NI/min | mm 20 | G 1" |